
City of Clayton



Trails and Landscape Committee

Annual Report
2014–2015

Message from the Chair:

The Trails and Landscape Committee has decreased by three for fiscal year 2014 – 2015. We currently have a nine member committee. The committee welcomed back two reappointed members Clayton Smith and Bob Steiner. Thanks to Clayton Smith for taking on the role of Vice Chair! I would also like to thank Ted Sudderth for his contributions while serving on the TLC committee and wish him well. I'm pleased to announce Christopher Garcia as a new addition to the TLC this year! The current members have provided meaningful contributions to the TLC. I'm looking forward to working with the current committee members along with Laura Hoffmeister and Mark Janney to ensure that we all execute on our commitments to the TLC going forward!

TLC reviewed the special tax funding measure which is the only source of funding for the Landscape Maintenance District, as it expires in 2017. We reviewed the current funding by the special tax which is to expire in 2017. This funding is the sole source for the District's operations and maintenance, at about \$1 million annually. The consensus was to recommend the City Council to ask voters in the June 2016 election to extend it for another 10 years with the same methodology rate and term. The consensus was to extend the current tax on the June 2016 election. Pending the outcome, there will be a second opportunity to get it passed in November 2016.

While several maintenance initiatives were addressed by the end of fiscal year 2014/2015, we were not able to undertake any landscape projects due to the lingering drought conditions; however, this was the second year of extra tree trimming – lifting tree canopy – in targeted vegetated areas of Oakhurst to reduce fuel load of open space. Reviewed modified irrigation watering and irrigation water conservation policy to comply with most current drought water reductions (45% decrease of watering) in the landscape district from 2013 and city had already reduced its watering from prior baseline created in 2008.

The TLC did recommended new capital project (which city council approved) and allocated \$300,000 toward various entryway landscape areas which will be redesigned with more hardscape and hardier drought tolerant plantings. Plans will be prepared and reviewed by the TLC and ultimately the city council. The plans will be ready so that when drought restrictions are modified and re-landscaping can commence city is ready with plans. The concept plans will be prepared in house by maintenance supervisor John Johnston who also designed the successful Water Feature re-landscaping and Clayton Road median re-landscaping. Both of these prior redesigns incorporated hardscape and hardy drought tolerant plants that also have variety of color. Recommended and City Council approved including the Lower Easley trail to be resurfaced along with the street repaving project to provide economies of scale as was done a few years back with other trail repaving project.

The following Annual Report is for the 2014 – 2015 fiscal year. This report contains a detailed account of the expenditures of revenues collected by Measure B. All revenue collected by this measure is used on the Landscape maintenance District (LMD). Measure B required the formation of a Citizen Oversight Board to assure that Measure B funds are being utilized for their intended purpose. The Citizen Oversight Committee is made up of citizens of Clayton that are appointed by the City Council to serve two year terms. The committee will advise the council on LMD projects and maintenance reports review & submit recommendations on future budgets and present an annual report for use by the Council and the citizens of Clayton.

Adopt-A-Trail program will continue in FY 2015-2016. New TLC member Christopher Garcia enthusiastically volunteered to coordinate. This program is designed to attract sponsors (families, individuals or businesses) who either make an annual financial pledge and/or a commitment to supply a work group to augment the efforts of the maintenance staff with regard to trail maintenance on one of eleven (11) trail segments. Posted at the head of each adopted trail is a plaque bearing the name of both the financial and the work-group sponsor. The bi-annual financial sponsorship is \$1,000, while work group sponsorship is \$200 per year.

Regards,

Larry Casagrande
Larry Casagrande
Chair

LANDSCAPE MAINTENANCE DISTRICT CELEBRATES ITS EIGHTH YEAR:

The Citywide Landscape Maintenance District (“District”) ended its Eighth year of operation on June 30, 2015. It operates and maintains the public roadway landscaping and its irrigation system, the trail system, and the “Clayton fountain.” It also provides weed abatement and fire breaks in the open spaces.

The District does not include any of the city parks/sports fields, the City Hall and Library Landscape , or the downtown Grove Park which are funded by other taxes.

Measure B, passed by voters in June 2007, established a Citizens’ Oversight Committee that is commonly known as the Trails and Landscaping Committee (“TLC”) which advises the City Council and staff on matters concerning the District budget, priorities, and responsibilities. The TLC consists of up to eleven 11 non-paid, volunteer citizens of Clayton and the Vice Mayor who serves as the City Council’s non-voting representative in an ex-officio liaison capacity. The TLC currently meets on approximately a quarterly basis to oversee the operation of the District.

2014-2015 TLC MEMBERS:

Citizens and their respective terms who are currently serving as members of the TLC:

Ex-Officio	Howard Geller (Vice Mayor)
Ex-Officio-Alternate	Keith Haydon (Council Member)
Larry Casagrande (Chair)	December 2013 - December 2015
Clayton Smith (Vice Chair)	December 2014 - December 2016
Ted Sudderth	December 2012- December 2014
Christopher Garcia	December 2014 - December 2016
Howard Glazier	December 2013 - December 2015
Alyse Smith	December 2013 - December 2015
Robert Erich	December 2013 - December 2015
Bob Steiner	December - December 2016
Anthony Chippero	December 2013 - December 2015
Harun Simbirdi	December 2013 - December 2015

COMMITTEE ROSTER
TRAILS AND LANDSCAPING COMMITTEE

Rev. 5/30/2015

Laura/TLCRoster2015

Larry Casagrande (Chair)
239 Jeffry Ranch Place
Clayton, CA 94517
(925) 693-0073
email: Lcasagrande@chevron.com
(term: Dec. 2013 – December 2015)

Anthony Chippero
1713 Indian Wells Way
Clayton, CA 94517
(925) 234-6417
email: ajchippero@comcast.net
(term: June 2013 - December 2015)

Robert Erich
1044 Pebble Beach Drive
Clayton, CA 94517
(925) 946-0371 (wk); (925) 673-0544(alt/hm #)
email: erichlaw@me.com
(term: December 2013- December 2015)

Christopher Garcia
203 Mt. Wilson Place
Clayton, CA 94517
(925) 304-2144 (hm); (805) 748-4974 (wk)
email: Christopher@OutcastWines.com
or chrisLgarcia@hotmail.com
(term: December 2014- December 2016)

Howard Glazier
6021 Golden Eagle Way
Clayton, CA 94517
(925) 899-3314 (cell primary ph#)
Email: howardglazier44@comcast.net
(term: Dec. 2013- December 2015)

Harun Simbirdi
1353 El Camino Drive
Clayton, CA 94517
(925) 338-6075
email: simbirdi@yahoo.com
(term: June 2013 – December 2015)

Alyse Smith
601 Condor Place
Clayton, CA 94517
(c) (925)993-8583
email: alysej@comcast.net
(term: Dec. 2013- December 2015)

Clayton Smith (Vice Chair)
8 Long Creek Circle
Clayton, CA 94517
(925) 672-2529; (business): (925) 473-7792
email: clayton@alum.calberkeley.org or
csmith94517@comcast.net
(term: Dec. 2014 - December 2016)

Bob Steiner
4701 Morgan Territory Road
Clayton CA 94517
business: (925) 672-5854; (c) 925-787-1153
email: rws32@earthlink.com
(term: Dec. 2014 - December 2016)

Ted Sudderth
1031 Kenston
Clayton CA 94517
925-672-4377
email: unkted@aol.com
(term: Dec. 2012 - December 2014)

TLC Recommendations, Projects, and Work Product Review 2014-2015

- v' TLC regularly receives and reviews reports on maintenance staff activities see attached City Maintenance Quarterly Report Update covering the periods: 6/9/14; 3/16/15 & 6/8/15. Some of the more significant issues in the reports include, but were not limited to:
 - o Spot spray and pull weeds in the Landscape District Citywide on a continuing basis.
 - o Continued our semi-annual trimming of the Landscape in several areas.
 - o Removed one Sycamore tree hit by a car on Clayton road & trimmed two Eucalyptus trees that were encroaching on Redwood trees along Clayton Road by Peacock Creek Drive.
 - o Completed the annual weed abatement for fire protection around homes bordering on open space City wide, adjacent to the roadway and certain trails.

- v' Re-enforced the committee's commitment to expanding the Adopt-A-Trail program.

- v' Reviewed Incoming and outgoing correspondence between citizens and staff regarding various concerns and observations relating to landscaping and trail issues.

- v' Reviewed and approved the proposed landscape district budget for FY 2014-2015.

- v' Once again, complimented the City Maintenance staff for the commendable job they do in effectively managing the available water supply and the maintaining the entire irrigation system.

ADOPT-A-TRAIL PROGRAM:

The Adopt-a-Trail program continues with TLC members working as volunteers to support the effort. The program aims to:

- Augment financing provided by Measure B
- Make the trails cleaner
- Celebrate the trails' sponsors and
volunteers
- Foster civic pride through volunteerism,
philanthropy, and cleanliness

The TLC has identified several trail segments for adopt. Each segment can have two adopters: a financial adopter and clean-up adopter.

Please see the APPENDIX section of this report for a current listing of adopters.

TLC RECOMMENDS BUDGET FOR FISCAL YEAR 2014-2015 TO CITY COUNCIL:

The TLC submitted a proposed budget to the City Council, which was based on the FY 2013/2014 assessment, subject to adjustment by the Consumer Price Index (CPI), but capped to a 3% maximum increase per Measure B. Subsequently, the CPI was published at an increase of 2.78% and in June 2014, the City Council adopted a total annual assessment of \$1,005,224 encompassing all residential parcels or non-residential parcel acre. *A copy of the adopted budget and further explanation of Fund 210 is included in the APPENDIX section of this report.*

COMMUNITY OUTREACH:

Both the TLC and the District continue to reach out to the public to keep citizens informed of their activities in a variety of ways, which include:

- Inviting the public to attend quarterly TLC meetings
- Requesting comments and questions via email [to cityinfo@ci.clayton.ca.us](mailto:cityinfo@ci.clayton.ca.us)
- Posting meeting minutes at the City website at www.ci.clayton.ca.us
- Presenting summaries of TLC meetings at City Council meetings
- Publishing quarterly reports of maintenance staff activities
- Submitting articles about the District to the Clayton Pioneer newspaper

APPENDIX

- 2014-2015 Budget
- City Wide Landscaping Maintenance District Fund No. 210
- City Maintenance Quarterly Report(s) - Trails and Landscaping
- Adopt a Trail Sponsors
- Trails and Landscape Committee Informational brochure
- Water Story- Clayton Pioneer 5/15/2015

Citywide Landscape Maintenance District — Fund No. 210

In June 2007, Clayton voters approved a replacement real property special tax to continue funding the operation and maintenance of their citywide public landscaped areas. This annual tax is restricted to costs associated with: arterial and specified roadway medians and parkways, the trails system, the annual open space noxious weed abatement in Oakhurst hills, the annual open space and trails weed abatement for fire and public safety, landscape and turf irrigation and the monthly maintenance and special occasion operation of the "Clayton Fountain."

Maintenance of City Parks *is not* included as an authorized expense under the District's Act; park maintenance obligations fall to the City's General Fund. *Citywide public landscaping services have always been funded by a special revenue tax levied on private properties throughout the City.* The District is completing its 5th year of a 10-year approved operation (Measure B), and its citizens' oversight committee (Trails and Landscaping Committee, or TLC) meets periodically to ensure the promised maintenance standards and efficiencies are achieved with these special-purpose tax revenues.

Pursuant to the terms of voter-approved Measure B, the special tax rate may be modified annually by the change in the Consumer Price Index (CPI; San Francisco —Bay Area) from April to April. In no event shall the tax rate be increased by more than 3% each year. The CPI change (from April 2013 to April 2014) posted at 2.78%. Pursuant to its oversight charge, the citizens' TLC considered the CPI change and the District's budget at its public meeting on June 8th 2014 meeting and adopted a motion to recommend the City Council implement the 2.78% CPI annual rate adjustment for the FY 14-15 year. The City Council subsequently considered and adopted this recommendation at its public meetings in June with the budget and in July with the District levy resolutions. The District's revenue projection was increased by the 2.78% for a total assessment revenue of \$1,005,224 for FY 2014-15; this is an annual increase of \$27,385 over FY 13-14. Adding the interest earnings of \$4,000 brings the total revenue budget for FY 14-15 to \$1,009,224.

With the District investing almost \$800,000 in public landscape improvements, irrigation and Trail system upgrades over the last three (3) years, the equity reserves of the District have been appropriately drawn down. Understandably then, the citizens' Trails and Landscape Committee as well as City staff agreed the Districts improvement projects should be slightly curtailed during FY 2013-14 in order to replenish the reserves for another large landscape project push. For FY 2014-15, the District budgeted to fund the following landscape improvement projects:

a. Open Space fire prevention tree and shrub trimming:	\$ 30,000
b. Keller Ridge Dr. landscaping improvements <small>(on hold due to drought restrictions)</small>	\$ 46,000
c. Replace Irrigation System central control field panel:	\$ 20,000
d. Re-Landscape Jeffry Ranch median island <small>(on hold due to drought restrictions)</small>	\$ 6,500
e. LMD Bridge Surface Renovation project	\$ 70,000
f. Downtown planters replacement project	\$ 35,000
Total	\$207,000

The installation and commencement of these significant landscape restoration and District improvement projects illustrate the success of the District in managing the voter's preference for a "pay-as-you-go" ballot tax measure. The defeated Measure "0" (2005) would have issued a revenue bond in its initial year to attack the public improvements sooner but conservative Clayton voters frowned on the higher annual assessment and the bonded indebtedness to be shouldered by the District. Entering the District's 8th year of operation still allows the accumulation of reserves to accomplish many of the planned objectives.

Personnel services for this labor-intensive work effort account for 33.7% of the District's budget this year (\$341,300), down slightly from the prior year's portion of 37.5% caused by less labor time being expended after new landscaping and irrigation systems are installed. Whenever possible, tasks within the District are assigned to temporary seasonal personnel that are less expensive labor (e.g. trimming), which shifts the permanent City maintenance personnel (5) to tasks requiring journeymen-level experiences (e.g. irrigation line and system repairs).

As approved by Measure "B" voters, the District's budget includes an annual expense of \$20,000 (Account 7316) for the purchase of replacement plants. The District further contributes its annual allocation of \$13,500 to the city's Capital Equipment replacement Fund (CERF), from which Maintenance vehicles and equipment are purchased for use in maintaining the Landscape District. An expense of \$33,056 (3.3%) of annual district revenue is transferred to the City's General Fund to pay for administrative and overhead activities of the City (e.g. telephones; payroll processing; accounts receivable and payable; District direction) attributable to administering the District's annual operations.

With all these actions, the District's ending fund balance on June 30, 2015 will be \$133,520, which equates to a reserve of 13.2% of its annual tax revenue. The reserve status is confirmation the City does not siphon "surplus" monies of the District into its General Fund but uses the special tax revenue for its intended purposes.

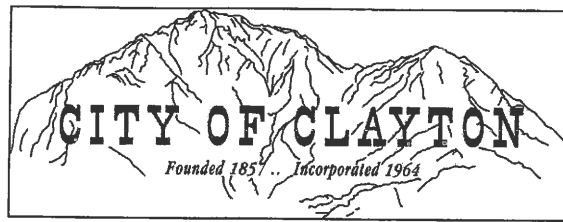
END

City of Clayton
Landscape Mtn District CFD 2007-1 Fund 210
Adopted Budget 2014-15

Account Number	Account Name	2012-13 Actual	2013-14 Adopted Budget	2013-14 Projected	2014-15 Adopted Budget
7111	Salaries/Regular	175,559	162,632	162,632	159,880
7112	Temporary Help	69,573	94,150	94,150	98,110
7113	Overtime	67	-	-	-
7218	LTD Insurance	1,162	1,374	1,374	1,300
7220	PERS Retirement	38,548	40,784	40,784	38,750
7231	Workers Comp Insurance	7,416	9,966	9,966	11,420
7232	Unemployment Insurance	5,449	5,449	5,500	4,700
7233	FICA and Medicare	6,943	9,561	9,561	9,830
7246	Benefit Insurance	35,782	35,611	35,611	39,180
7311	General Supplies	33,924	43,000	43,000	43,000
7316	Landscape Replacement Material	3,498	20,000	20,000	20,000
7335	Gas & Electric Serv.	28,308	25,000	21,000	25,000
7338	Water Service	178,202	180,000	180,000	187,000
7342	Machinery/ Equip Maint.	12,682	10,000	10,000	10,000
7343	Vehicle Maintenance	4,480	12,000	12,000	12,000
7344	Vehicle Gas, Oil, and Supplies	12,850	10,500	14,800	15,300
7381	Property Tax Admin Cost	3,735	3,737	3,737	3,800
7389	Misc. Expenses	80	-	-	-
7411	Prof. Services Retainer	4,660	-	-	-
7412	Engineering Inspection	-	1,430	-	-
7419	Other Prof. Services	142,059	163,355	146,157	148,419
7486	CERF Charges/Depreciation	13,500	13,500	13,500	13,500
7520	Project/Program costs	19,145	82,900	61,807	207,000
7615	Property Taxes	2,447	2,893	2,506	2,600
8101	Transfer to General Fund	31,402	32,156	32,156	33,056
8111	Transfer to CIP Fund	468,601	-	9,887	-
8113	Transfer to Stormwater Fund	456	-	912	912
Total Expenditures		1,300,527	959,998	931,041	1,084,757
4604	Clayton LMD Assessment	954,704	978,034	978,034	1,005,224
5601	Interest	3,279	4,000	3,000	4,000
5790	Other Revenue	(400)	-	-	-
5702	Donations/Contributions	250	-	1,200	-
5606	Unrealized Inv Gain/Loss	(6,727)	-	-	-
Total Revenue		951,106	982,034	982,234	1,009,224
Increase (Decrease) in Fund Balance		(349,421)	22,036	51,194	(75,533)
Beginning Fund Balance		507,280	157,860	157,860	209,053
Ending Fund Balance		157,860	179,896	209,053	133,520

City of Clayton
Landscape Mtn District CFD 2007-1 Fund 210
Adopted Budget 2014-15

Account Number	Account Name	2012-13 Actual	2013-14 Adopted Budget	2013-14 Projected	2014-15 Adopted Budget
7311	General Supplies				
	Herbicides	-	16,000	16,000	16,000
	Fertilizer	-	7,000	7,000	7,000
	Irrigation	-	15,000	15,000	15,000
	Cole Supply	1,401	-	-	-
	Concord garded equipment	1,381	-	-	-
	Crop production services	6,357	-	-	-
	Bay Area Barricade	3,618	-	-	-
	John Deere Landscape	10,706	-	-	-
	Misc Supplies	10,462	5,000	5,000	5,000
		33,925	43,000	43,000	43,000
		(0)	-	-	-
7419	Other Professional Services				
	Wildland Resource Mgmt	5,900	-	-	-
	Environtech Enterprises (non-native invasive weed abatement)	45,199	59,000	59,000	59,000
	Outside arborist	-	-	-	-
	Permco - RFQ Noxious Weed Abatement	4,838	-	-	-
	Waraner Brothers -Tree trimming	16,138	25,000	25,000	25,000
	Waraner Bros Svc 1 x per yr+2 x trails	29,500	30,385	30,385	31,310
	NBS Admin Fees+Del letters	3,744	3,800	3,719	3,800
	Martel Water Systems	807	-	-	-
	Rodent Control (PTM)	10,768	9,500	9,500	9,500
	Advertising for TEMP labor/Live Scans (City of Concord)	512	2,000	512	1,000
	Sprayer Sales Company (Spraytec - ww treatment)	1,670	2,241	2,241	2,241
	Water Feature Extra + repair contingency	4,184	5,000	2,000	5,000
	Water Feature \$650x12 (maintenance)	7,150	8,000	7,800	7,800
	Sub Division/City Entry Signs	1,976	4,000	4,329	2,000
	Daffodil Hill Landscape Mtn Supplies/water	-	12,830	-	-
	CCC Fire Protection - Operation Permit	231	231	303	400
	Paco Pumps - new pump	3,554	-	-	-
	Electrical repair - Cheyenne	5,887	-	-	-
	EBRCSA-Radio Mtn PW radio's	-	1,368	1,368	1,368
		142,059	163,355	146,157	148,419
		-	-	-	-
7520	Project/Program costs				
	Reserve Projects	-	-	-	-
	Trail Resurface - Bruce Lee Trail \$50k	-	-	-	-
	Trail Crack sealing/repair \$10k	-	-	-	-
	CL Rd Median/Roadway Re-Landscape \$328,0'	952	-	-	-
	Irrigation Central Controller System (project #4019 - \$30k)	18,193	-	11,807	-
	Tree Replacement Trimming \$10k	-	-	-	-
	Jeffrey Ranch Relandscaping \$2.5K	-	-	-	-
	Keller Ridge Tree Replacement \$16.6K	-	-	-	-
	Open Space Fire Prevention Tree/Shrub Trim (one time)	-	30,000	30,000	30,000
	Keller Ridge St. Tree replacement (40 trees @ \$1,150 each/remove & replace)	-	29,400	-	46,000
	Jeffrey Ranch Relandscaping	-	3,500	-	6,000
	Replace Irrigation Central Control Field Panel	-	20,000	20,000	20,000
	Daffodil Hill \$29k	-	-	-	-
	LMD bridge renovation project (trails) (\$70,000)	-	-	-	70,000
	Downtown planters (\$35,000)	-	-	-	35,000
		19,145	82,900	61,807	207,000
		(0)	-	-	-
8111	Transfers out to Capital Improvement Fund (303)				
	CIP 10429 "Trails Repave Project" (#3022)	50,000	-	9,887	-
	CIP 10430 "Landscape Median Project" (#3016)	318,601	-	-	-
	CIP10431 "Daffodil Hill Project" (#4020)	25,000	-	-	-
	CIP 10421 "Cardinet Trail Restoration Project" (#3016)	75,000	-	-	-
		468,601	-	9,887	-



MAINTENANCE WORK UPDATE TRAILS & LANDSCAPING

6/10/2014 to 3/16/15

- Spot spray and pull weeds in the Landscape District Citywide on a continuing basis.
- Irrigation systems have been shut off Citywide since November of last year. In the last two weeks some lawn areas have needed to be turned on with the warmer weather. Crews made repairs to the irrigation systems when the systems were in operation over the summer months and have started to make repairs as we head into the spring. As stated in past reports as the irrigation systems continue to age crews are finding more repairs from tree roots breaking the mainlines to parts failing from age. Over the past summer season Staff continued the monitoring of water usage to achieve the 15% reduction in water usage from historical levels (2005 to 2008) that the Contra Cost Water District had asked customers to achieve. Then customers were asked to bring in a 20% reduction in water usage that was mandated by the state this was due to the continuing severe drought in California. Looking forward Contra Costa Water at this time is still asking for the continued savings of 20% of historical usage but this could change when they get their water allocation later this year or the state of California asks residents for more and deeper savings.
- Continued our semi-annual trimming of the Landscape over the summer and winter in the following areas; Oakhurst Drive from City limits to Clayton Road, Clayton Road new medians from Center Street to Mitchell Canyon Road, Along Keller Ridge Drive, Along Eagle Peak Drive, Old Marsh Creek Road from Clayton Road to Stranahan subdivision, in the downtown area at the Post Office pathway and Tear Drop Island, Peacock Creek Drive, Marsh Creek Road from Clayton Road to City Limits, and completed the pruning of Crape Myrtle Trees within the Landscape District.
- Had the following area trees trimmed; removed one large Eucalyptus tree that had died on Lydia Lane, removed a large oak tree that died in Oakhurst open space off of Acorn Drive; the large tree trunk and branches were left in the open space as natural habitat. Safety trimmed trees on Marsh Creek Road in front of Stranahan Subdivision and Eucalyptus trees in the open space behind the homes on Petar Court. Lifted the ash trees along Atchinson Stage Road, Pine Hollow Road, Cardinet Trail, and North El Camino Drive. During the December storms had numerous trees mostly smaller ones and branches fall.
- Completed the fire abatement project around homes bordering on open space. The abatement consisted of the removal of any brush, dead vegetation, and the lifting of trees ten feet above ground level within a hundred feet of property line. Work has been completed along Keller Ridge Drive, Easley open space, Regency open space, and Diablo open space.



Memo

To: Trails and Landscape Committee
From: City of Clayton Maintenance Department
Date: 6/6/2014
Re: Deferred Maintenance Projects Status

There are four projects that were on the FY 13/14 adopted budget:

Jeffry Ranch cul-de-sac median re-landscaping: This project is on hold due to higher priority staff work items and the recent drought voluntary water reduction. The mature plants are more tolerant of reduced water; the lawn if it dies off will easily come back when rains re-appear. The staff will need to meet with the neighbors to get their input regarding changing out the current planting to eliminate the lawn and change out any larger plants that are getting near the end of their life, the goal to reduce the amount of time the maintenance staff spends. Alternatively the neighbors can maintain the area, some years back the neighbors had agreed to maintain but no written agreement was put into place and some of the neighbors have likely changed over. New shrubs will require more water than the established plants. Funds are being reset to continue with this project in the FY 14/15 budget.

Keller Ridge Drive Street Tree Replanting: This project is on hold due to the voluntary water reductions. Newly planted trees will require more water than in the past usage to get established. The funds for this project are being reset to carry forward with this project in the FY 14/15 budget.

Open Space Fire Prevention Tree/Shrub trimming/clearance (Oakhurst Open space area): This project will be completed by the end of June 2014. The contractor is about 66% completed. Areas completed are Peacock Creek/Pebble Beach; Miwok/Blue Oak. Left to do are Keller Ridge (end of cul-de sacs/street abutting open space) up to North Valley Park. Additional funds are being requested in the proposed FY 14/15 budget to continue this work in other areas of the City such as along the Easley Estates and El Molino area. (Note most of the Camdinet Trail from Library to Lydia Lane is actually property of the Oakhurst golf course and their responsibility for vegetation, the city has only a trail easement.)

Replacement of Irrigation Control Field Panels: This work is underway and ongoing.



Memo

To: Trails and Landscape Committee
From: Maintenance Staff
Date: March 16, 2015
Re: Deferred maintenance Status – Pedestrian Trail Bridge Deck Replacement

The replacement of the Trail Pedestrian Bridge Deck Planks is moving forward with the specifications and the scope of work being assembled by staff into a bid packet for bidding. Plans are for the project to be advertised and go out to bid in the next month, with the award of contract within ninety days after that by the Clayton City Council. The plan is for the work to be completed over the summer months when work is allow around and in the Cities creeks (May 15 to October 15).



MAINTENANCE WORK UPDATE TRAILS & LANDSCAPING

3/17/2015 to 6/8/2015

- Spot spray and pull weeds in the Landscape District Citywide on a continuing basis.
- Started to turn on irrigation City wide, the Landscape District has been ordered by Contra Costa Water District to cut water usage by 45% from 2013 usage. See packet memo on the Cities policy for achieving this goal and water usage policy.
- Continued our semi-annual trimming of the Landscape in the following areas; Along Clayton Road from Peacock Drive to Oakhurst Drive (eastside), Clayton Road from North Mitchell Canyon Road to Lydia Lane, Atchinson Stage Road (North and South), Pine Hollow Road, Center Street Trail, and have started along Old Marsh Creek Road.
- Removed one Sycamore tree hit by a car on Clayton Road. Trimmed two Eucalyptus trees that were encroaching on Redwood trees along Clayton Road by Peacock Creek Drive.
- Completed the annual weed abatement for fire protection around homes bordering on open space City wide, adjacent to the roadway, and certain trails. The abatement consisted of the cutting down weeds a minimum of 30 feet behind homes bordering on Landscape District open space; those areas open areas adjacent to the roadway (ie: Clayton Road, old Marsh Creek Road); along the major trail/open space areas (ie: Carndinet, Bruce Lee/Mt. Diablo Creek, Donner Creek Trails); and open space areas along the Main Trail (Diablo Creek Court, El Molino/Samuel Court; Easley Estates).

2015 Drought Program

- CCWD Proposal to obtain 28% reduction
 - Residential / Commercial (25%)
 - Irrigation Meters (from 40% to 45%)!
 - Industrial (5%)
- Temporary increase treated water quantity charge by \$0.50 per unit (748 gallons). 14% rate increase.
- Residential use below 200 gallons per day; considered conserver and exempt from pricing adjustment.
- Rate eliminated when Governor lifts Executive Order.

Memo

To: Trails and Landscape Committee

From: Maintenance Supervisors

Date: June 8, 2015

Re: City's Water Rationing Plan

This is where the City stands at the beginning of May 2015 on the State of California's mandatory water rationing. This report was presented by the City Manager to the City Council at their May 19, 2015 meeting.

In general the City must reduce its irrigation water to watering no more than 2 x week. Although a majority of the District and city landscape is drought tolerant, has some areas with more current water efficient irrigation technology, the landscaping is not drought proof. Two times a week watering on the plants and trees may stress the plants – if (when) the later summer/fall hits with hot day temps and warm evening temps, it is likely there will be additional stress and plant die back or some plant demise.

The State of California recently established 9 tiers of water usage within the state for each water supplier and its consumption rates; Tier 9 is the highest water consumer. The Contra Costa Water District fell into Tier 7, which mandates an increase in consumer reduction of water usage: Residential/Commercial water usage will go to 28%; **Irrigation-only Meters to 45%**; and Industrial to 5%. **This revision means the City's parks and landscape irrigation meters must now reduce water usage by 45%.** To further incentivize water use reductions **CCWD is imposing a temporary increase in its treated water quantity charge by \$0.50 per unit (a unit equals 748 gallons); this equates to a 14% rate increase.** Residential usage below 200 gallons per day is considered to already be a conserver and will be exempt from the price adjustment. CCWD indicates the temporary rate increase will be eliminated when the Governor lifts the Executive Order mandating statewide water conservation.

General Policy

The City must cut back 40% from the City's actual 2013 water usage for outdoor water irrigation and 25% in the City's facility usage. These cuts will be greater than the cuts in 2009 because it is based on water usage in 2013 and not total landscape area using historical ET (EvapoTranspiration) rates, which was the method used in the 2009 drought. Staff is forecasting less water being allocated this year than in the 2009 drought and is planning accordingly. The City will not receive actual allocations from Contra Costa Water District (CCDW) until after June 4th when it expects to mail the allocation amounts out to all Contra Costa Water District (CCWD) customers. As in the past drought all of the City's landscape water meters are pooled together so City Staff may allocate its water where it is most needed within the landscaping.

In areas watered using Contra Costa Water District (CCWD) potable water, the outdoor irrigation schedule cannot be more than two days a week. Since lawns are the largest user of water and two days a week will likely not be sufficient to keep them green during the summer months, the following lawns will not be irrigated:

A. All lawns in the Landscape District except the:

- Clayton Fountain (due to recent landscape renovation, this area has a high efficiency irrigation system meeting the state's Water Conversation Ordinance) The City will water it just two days a week as mandated; if the irrigation system cannot keep the lawn area semi green with just the two day watering schedule, City Staff will reevaluate and determine if the system should be shut down during the summer months.
- The lawns in the Downtown area at the Oak Street exit/ramp to Main Street, the tear drop (roses and boxwood island) on Main Street, and the area surrounding the Holiday Tree. These areas receive water from an existing City groundwater well (see below for irrigation usage serviced by groundwater wells).

The following lawns at these City park will not be watered (irrigated by CCWD potable water):

- North Valley Park
- Stranahan Park

The Clayton Community Park will be irrigated for the allowed two days per week to try to keep the field's semi green for playing. At this time the irrigation runs Monday night and Thursday night with the irrigation water meters shut down in between to prevent loss of water from mainline breaks.

The parks in Westwood, The Grove, and Lydia Lane use groundwater well water. (see below for irrigation usage at well sites)

B. Lawns at City Buildings

The City Hall courtyard will initially be watered two days per week in attempt to keep area semi green. City Staff will reevaluate and determine if this system should be shut down during the summer months.

The Community Library grounds are irrigated using groundwater well water (see below for irrigation usage at well sites).

C. WATERING WITH CONTRA COSTA WATER DISTRICT (CCWD) POTABLE WATER

All landscaping supplied with water from the Contra Costa Water District (CCWD) must be watered under State Water Board and Executive Order regulations that have been announced, which include the following: only two days per week , no watering between 9am and 5pm, no run off, and repair breaks as soon as possible. Staff priority (as in previous years of drought conditions) has been to keep as many of the City's trees, then shrubs, and last the groundcover alive with the newest landscaping renovations getting top priority.

The following is being done to monitor/save water and meet the City's allocated water supply: Read water meters every two weeks; shut off water meters that will not be used this year; shut off exterior public drinking fountains to deter misuse and potential water theft; and lock all quick couplers to prevent water theft and misuse.

At this time City Staff has turned off outdoor drinking fountains in the City parks (except at the Dog Park). Staff will monitor water usage at the Dog Park and if it becomes excessive we will determine if water should be shut off. As of now, all water features (i.e., Clayton Fountain, City Hall courtyard fountain, and the new Splash Pad at The Grove Park) have been shut off for public perception or in the case of the Splash Pad it is non-recirculated potable water.

Public restrooms remain open at City facilities for public health reasons except the exterior City Hall courtyard restrooms. A posted sign redirects the public to use the restrooms at the Clayton Community Library.

D. WATERING WITH CITY GROUNDWATER WELL WATER

The City owns and operates several groundwater wells. At this time, groundwater wells supplying non-potable water (i.e. not for human use or consumption) are not subject to the State's mandatory water restrictions and regulations. City wells exist at the following locations:

1. Westwood Park and Lydia Lane Park

By separate agreement, the well water from these wells is used by the Oakhurst Country Club to irrigate its private golf course; well water is also used to irrigate Westwood Park. The wells are monitored monthly by separate contract (paid by Oakhurst); should the groundwater levels of these wells dip below a pre-determined depth, the wells are shut down and each user (Oakhurst; City; Westwood HOA) must convert to pre-connected potable water supplied by CCWD and then subject to the State's outdoor irrigation restriction of no more than 2 days per week.

2. Clayton Community Library

This groundwater well, in addition to irrigating the Library grounds, supplies the water to irrigate the Clayton Road landscape from the Oakhurst Drive intersection to the Mitchell Canyon Road intersection, along old Marsh Creek Road from Clayton Road to Main Street, at the Town Center Sign grounds, and at the Main Street tear drop island.

3. The Grove Park

This groundwater well in the vicinity of the U.S. Post Office, is used to irrigate The Grove Park landscape and lawn, waters the Endeavor Hall landscaping, the landscape around the Endeavor Hall public parking lot, and the Center Street raised planter boxes.

Although not subject to the State's water restrictions, these City groundwater wells have been voluntarily limited to irrigate/water no more than three days in a one week period to help conserve these water supplies and to lead by example in reducing water usage.

* * * * *

Adopt a Trail updated as of 6/30/14

Adopters/Revenues

<u>Name</u>	<u>Sponsor Type</u>	<u>Trail Section</u>	<u>Amount Recvd</u>	<u>Date \$ Recvd</u>	<u>Ag. recvd</u>	<u>Start Date</u>	<u>Expiration Date</u>
Sudderth Family CBCA	Volunteer Labor	Cardinet Trail (Library - Lydia Ln Pk)	\$200	8/12/2013	Yes	9/1/2013 9/1/2013	3/1/2015 3/1/2015
	Financial Sponsor	Cardinet Trail (Library - Lydia Ln Pk)	\$1000	8/12/2013			
Passport2Clayton (P2C) Passport2Clayton (P2C)	Volunteer Labor	Bruce Lee Trail (Upper Easley Trail)	\$200	2/1/2011	Yes	3/1/2011 3/1/2011	3/1/2012 3/1/2012
	Financial Sponsor	Bruce Lee Trail (Upper Easley Trail)	\$1000	2/1/2011			
Employees of CD Federal Credit Union Discovery Builders	Volunteer Labor	Blue Oak Trail	\$200	2/9/2011	Yes	3/1/2011 3/1/2011	3/1/2012 3/1/2012
	Financial Sponsor	Blue Oak Trail	\$1000	2/17/2011			
Siegel Family <u>Available</u>	Volunteer Labor Financial Sponsor	Lower Easley Trail Lower Easley Trail	\$250	1/7/2013	Yes	TBD	TBD
<u>Available</u> <u>Available</u>	Volunteer Labor Financial Sponsor	Cardinet Trail (Lydia Ln Pk - Westwood Pk) Cardinet Trail (Lydia Ln Pk - Westwood Pk)					
<u>Available</u> <u>Available</u>	Volunteer Labor Financial Sponsor	Donner Creek Trail Donner Creek Trail					

Adopt a Trail Expenses

<u>Date</u>	<u>purpose</u>	<u>Amount</u>
3/8/2009	19.5 hrs maintenance temp labor make/ install signs	\$219.00
4/17/2009	materials for sign posts	\$1527.34
6/23/2009	signs printing (bay area barricade)	\$98.87
6/30/2009	t-shirts	\$289.51
8/9/2009	wood for future sign posts (Dolan's Lumber)	\$595.15
8/9/2009	sign printing (Bay Area Barricade)	\$10.93
5/14/2010	Clayton Pioneer Ad	\$200.00
8/31/2011	sign re-screening	\$10.82
8/31/2011	Signs (Bay Area Barricade)	\$209.35
8/31/2011	27 hrs maintenance reg/temp labor make/install signs	\$1116.80
11/30/2011	Oak tree lights (trail by library)	\$3305.98
11/30/2011	electric wire and parts for oak tree lights (trail by Library)	\$437.00
12/30/2011	17 hrs reg/temp labor install oak tree lights (trail by library)	\$697.00
	<u>Additional expenses for latest adopters signs and installation unknown</u>	<u>TBD</u>
	<u>Total Expenses to date (NOT including outstanding expenses for latest signs and relocation)</u>	<u>\$8717.75</u>

Donations

Renewal and New as of 6/30/14	\$1450
Prior donations	\$9250
	<u>\$10,700</u>

6/30/2014 Account Balance: \$10,700-\$8715.75 = \$1982.25 (this amount will be reduced based upon outstanding expenses yet to be determined)



ADOPT A TRAIL



The program aims to:

- Augment financing provided by Measure B the voter approved Landscape Maintenance District, all funds from program sponsors and volunteers also known as adopters are used for the program and trail system maintenance only.
- Provide a venue for volunteers to help Clayton maintain and enhance its trail network
- Make the trails cleaner
- Celebrate the sponsors and volunteers that help Clayton keep the trail network one of the distinguishing characteristics of our community
- Foster civic pride through volunteerism, philanthropy, and cleanliness

The Trails and Landscape Committee has initially identified 11 trail segments to adopt. Each segment has a financial adopter and a clean-up adopter. Besides paying the every two year fee (\$1,000 for financial adopters and \$200 for clean-up adopters), clean-up groups must identify a leader/contact person and complete the attached form. Adopters are recognized on their trail segment with a name plaque on a trail marker. Markers are installed at the time a financial sponsor is found for that trail segment.

Segments are assigned on a first-come, first-served basis. Adopters wanting recognition on the trail markers must also provide information that conforms to the city design specs for the markers.

If you are interested in participating in this program or would like additional information please contact Committee member **Christopher Garcia** at email: chrislgarcia@hotmail.com



City of Clayton
Clayton Adopt-a-Trail Program

APPLICATION

Date: _____

Adopt-a-Trail Group: _____

TYPE OF Sponsor (circle one)

Financial

Labor-Clean Up

Group Contact: _____

Contact's Mailing Address: _____

Phone Number: _____ Email: _____

Requested Segment to
Adopt: _____

Tentative Start Date: _____

Average number of volunteers per work day: _____

STATEMENT OF AGREEMENT

As representative of this organization, I have read and agree to abide by the policies, regulations and safety recommendations as put forth by the City of Clayton's Public Works and Engineering Department. I understand that this is an application for the Adopt-a-Trail program and that a representative from the city will contact me to finalize an agreement. I understand that the Department will make the final determination as to whether a group can participate and the final segment assignment designation. I understand that each volunteer must sign a City of Clayton Voluntary Service Agreement and Liability Waiver before participating in the program. Finally, I understand that the city reserves the right to terminate this agreement at any time.

Adopter/sponsor Group Coordinator -Contact

Name print

(signature/date)

ADOPT-A-TRAIL WORK PLAN : Sponsor/Adopter Name _____

Proposed Program Plan for: _____
[Insert Trail Segment Name]

Adopt-a-Trail Projects could include but are not limited to the following items, please mark all that apply to your project. This must be approved by the Department of Public Works and Engineering before work can begin.

Suggested Project Items

- Pick up litter and debris (required)
- Remove weeds (required)
- Raking and sweeping (required)
- Minor repairs of surfaces/furnishings
- Other _____
- Monitor/report maintenance needs (req)
- Plant trees*
- Plant and maintain flowerbeds*

* The planting of all flowers, trees and other plants must be pre-approved by the city. Support for special projects by adopting organizations will be arranged through the Trails and Landscaping Committee.

WORK SCHEDULE

Each group is required to have at least one work day every 4 months (total of 3 per year). Please list tentative dates for each work day. You will be expected to inform the Department of any date changes **at least 2 weeks in advance**.

Work Day #1 _____	Additional Work Days _____
Work Day #2 _____	_____
Work Day #3 _____	_____

Name(print)

Trails Landscape Committee member Name (print)

(signature/date)
Financial and/or Volunteer Clean up
Group Coordinator

(signature/date)
Trails and Landscaping Committee member

POLICIES

- The city will provide necessary trash bags, debris pickup, and hauling to ensure the success of ongoing tasks.
- Adopting organizations may keep and haul away for resale off site all recyclable trash they pickup.
- No one under the age of 14 may participate without adult supervision.
- While performing services at special project sites adopters will conform, at a minimum to the State of California Standard Specifications for hours of work, noise abatement, traffic control, erosion control, fire protection and management of materials.

(signature/date)

Group Coordinator

(signature/date)

[for the Trails and Landscaping Committee]

**Please return application to Christopher Garcia, Trails and Landscape Committee member c/o Clayton City Offices, 6000 Heritage Trail, Clayton CA 94517
For questions, please contact Christopher Garcia at chrisLgarcia@gmail.com**

Payment received: _____
Date

By: _____



EXAMPLE OF TRAIL MAKERS WITH ADOPTER/SPONSOR PLAQUE

CITY OF CLAYTON

Peacock
Creek
Trail



1.27 Miles

Trail Grade
75% Steep
25% Level

Surface
Crushed Granite

This Trail Segment Adopted By:

COMCAST
Cable

Clayton Valley
Little League

↑ 12" overall
sign
height ↓

← 6" total sign width →



8" x 8" wood mitered routed post w/metal sign
(brown background/white lettering) mounted inset onto post

Pass Rd Hess Rd

Kirker Pass 920

Concord Pavilion

Entrance

1033

Kirker

Kirkwood Dr

Concord




CLAYTON CITY LIMITS

Clayton Station shopping center

Concord

Pine Hollow

LEGEND

-  INITIAL TRAIL MARKER
-  OPTIONAL TRAIL MARKER
-  POTENTIAL FUTURE TRAIL MARKER

Note: All locations are approximate. Some locations may need to be modified in their location due to filed conditions. Final location subject to City of Clayton Maintenance staff.

State Park Headquarters
Staging area
Interpretive Center

Murchio Flats

Blue Oak Hill

BLACK DIAMOND TR

Peacock Hill

Peacock Hill

Peacock Hill

Peacock Hill

Peacock Hill

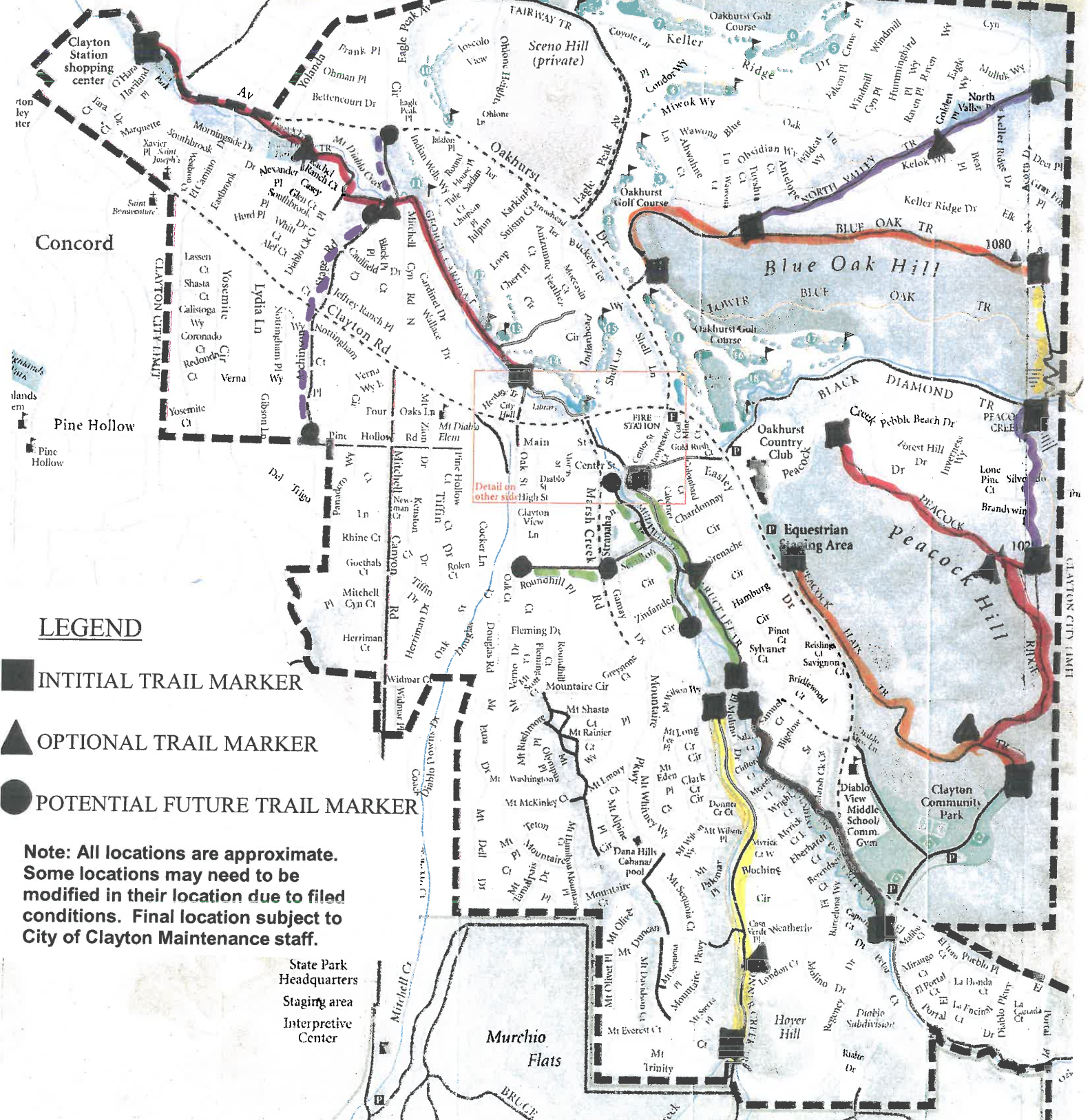
Peacock Hill

Peacock Hill

Peacock Hill

Peacock Hill

Peacock Hill



CLAYTON'S TRAILS & LANDSCAPE COMMITTEE (TLC)

Formed by the Clayton City Council in August 2007.

Comprised of up to 11 volunteer members of the Clayton community

Helps the city implement the voter-approved plan to manage the current and future needs of the citywide Landscape Maintenance District

Helps to manage and support Clayton's Adopt-A-Trail program



Serves as a financial oversight committee and provides short and long term implementation guidance to city staff and the City Council

The Landscape Maintenance District consists of roadway edge and roadway median landscaping, trail maintenance, and fire abatement on trails and open space (city parks and the Clayton fountain operation are not included in the district)

Funds can only be used for spending within the Landscape Maintenance District

GET INVOLVED!

The Trails and Landscape Committee meets quarterly on the 3rd Monday of the month at 7pm at the Clayton Library

Clayton residents are encouraged to attend these meetings to provide public opinion and ask questions

Meeting agendas are posted online: City web site at www.ci.clayton.ca.us

Printed copies at:
City Hall, 6000 Heritage Trail;
Clayton Library, 6125 Clayton Road;
Ohm's Bulletin Board, 1028 Diablo St

Please direct any questions or concerns to the City of Clayton via the website or address above

2015 Trails & Landscape Committee Members

Larry Casagrande (Chair)
Clayton Smith (Vice Chair)
A.J. Chippero
Robert Erich
Christopher Garcia
Howard Glazier
Harun Simbirdi
Alyse Smith
Bob Steiner
Howard Geller (Ex-Officio)



Trails & Landscape Committee
2015

**THE LANDSCAPE MAINTENANCE DISTRICT:
CLAYTON'S "FRONT YARD"**

The Landscape Maintenance District covers:

- over 2 million square feet of landscape
- 40,700 square feet of lawns and flowerbeds
- Almost 3,000 city trees
- 515 acres of open space
- 7 miles of creek side trails
- 20 miles of open space trails
- Approximately 50 street islands and medians

The District uses the equivalent of only three full time staff along with seasonal and volunteer workers

HOW IS THE DISTRICT FUNDED?

Measure B, a special 10-year special parcel tax passed by Clayton voters in June 2007 funds the District

Measure B is the only source of funding for the Landscape District supplies, electricity, irrigation, water, and labor

Funds may only be used for voter approved Landscape District expenses

Trails & Landscape Committee

ADOPT-A-TRAIL

If you are one of the many Clayton residents that enjoy our trail system you can further help the Landscape Maintenance District and beautify Clayton's trails by Adopting a Trail

This program aims to:

- Augment financing provided by Measure B
- Provide a venue for volunteers that help Clayton maintain and enhance it's trail network
- Make the trails cleaner
- Celebrate the sponsors and volunteers that help Clayton keep the trail network one of the distinguishing characteristics of our community
- Foster civic pride through volunteerism, philanthropy, and cleanliness

If you are interested in participating in this program or would like additional information please contact



TLC's STRATEGIC FOCUS

- Remove unwanted expenditures and control costs with strict oversight
- Create equity in the District
- Implement cost effective measures to improve irrigation and infrastructure
- Invest in modern equipment to increase maintenance efficiency and effectiveness
- Implement seasonal and situational based labor to minimize costs
- Adjust irrigation watering as necessary to comply with any drought water reduction mandates

STANDARDS & PRIORITIES FOR THE DISTRICT

- Mandatory firebreaks
- Weeds trimmed along major trails and creeks twice a year
- Trees trimmed for safety purposes
- Irrigation breaks repaired as necessary
- Public roadway landscaping trimmed twice a year
- Landscape areas fertilized once a year as necessary

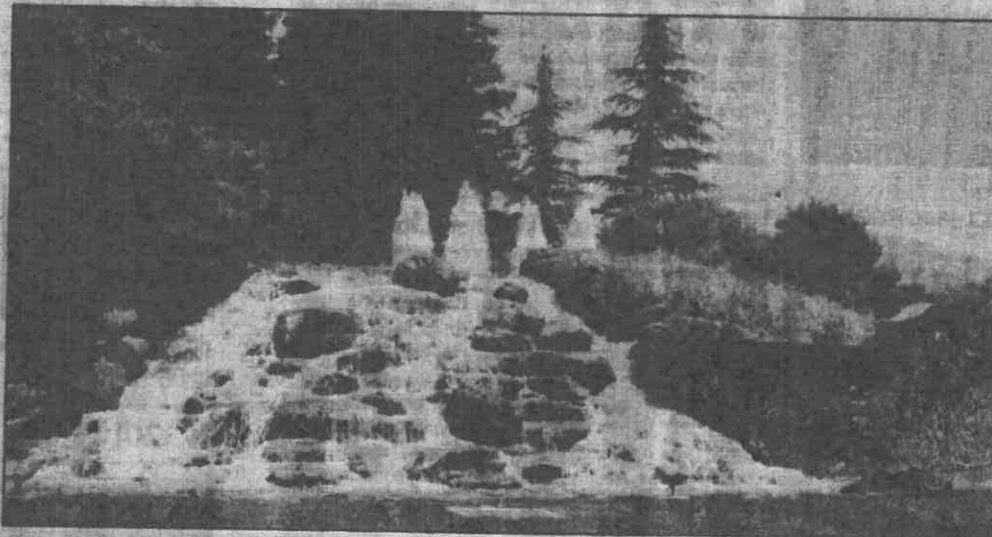
City to cut water usage by 40%

PEGGY SPEAR
Clayton Pioneer

Get ready, Clayton. Brown is the "in" color for summer, at least for lawns and turf.

Residents and communities across the state are mandated to cut their water usage by at least 25 percent this summer, the fourth year of a historic drought. The City of Clayton is no exception, as they are cutting back water usage a whopping 40 percent from 2013 levels, said City Manager Gary Napper.

"The state's extended drought represents a serious challenge for all in California and requires each resident and property owner in Clayton to prioritize one's water consumption habits," he said. "For the city, our 40-43 percent reduction in water usage, in comparison to the 25 percent reduction assigned residential users, necessitates staff evaluate which water-dependent assets and facilities are the more essential to retain and operate."



Tamara Steiner/Clayton Pioneer

TAKE A GOOD LONG LOOK—THIS IS A SIGHT CLAYTONIANS WON'T SEE FOR AWHILE. The Clayton fountain has gone dry and will stay that way indefinitely, another casualty of the drought and the governor's mandate to cut water use by 40 percent. Drinking fountains in the parks and the new water feature in The Grove are also turned off to meet cutback requirements.

For example, he said, landscaped plants and specimen trees will be the targets of the city's limited outdoor irrigation

at the sacrifice of lawn and turf. The two-days per week outdoor irrigation constraint imposed on residents by the Contra

Costa Water District last month also applies to the city and "we'll undoubtedly see visual stress to trees and plants as the

hot summer days set in."

"It is no longer 'business as usual'" he said.

Clayton residents will undoubtedly see the stress on lawns and turf, but some areas, such as The Grove Park and some downtown areas, are served by well water, and can be watered three times a week. The main area that will be affected, according to Clayton's Maintenance Supervisor Mark Janney, is the Community Park and fields, which will only be watered twice a week.

"They won't look so great," he said.

Historically, Janney said, the city uses about 300,000-400,000 gallons per day, but it has been cutting back that usage in recent years due to the drought. So cutting nearly half of that will definitely impact what the residents

See Water Cuts, page 9

Water cuts, from page 1

see in public areas around town. When the city faced similar cutbacks in 2009, trees, shrubs, groundcovers and newer planting areas were given watering priority over turf, Janney said. That will again be the priority.

In a recent memo to his staff, Napper outlined the water cutbacks. On the "hit list" were all public landscaped lawns, except the Clayton Fountain. Due to recent landscape renovations, this area has a high-efficiency irrigation system meeting the state's Water Conservation Ordinance. The city will water it just two days a week as mandated; if the irrigation system can't keep the lawn area semi-green with just the two day watering schedule, city staff will reevaluate and determine if the system should be shut down during the summer months.

Lawns that will not be watered include North Valley Park and Stranahan Park. As Janney said, the Clayton Community Park will be irrigated for

the allowed two-days-per-week to try to keep the fields semi-green for play. At this time, the irrigation runs Monday night and Thursday night with the irrigation water meters shut down in between to prevent loss of water from mainline breaks.

GROUNDWATER WELLS HELP

Luckily, like some of the downtown areas, the parks in Westwood, The Grove, and Lydia Lane all use groundwater well water, which aren't subject to the state water restrictions and can be watered three times a week.

Other areas that will be excluded from cutbacks include the lawns in the downtown area at the Oak Street exit and ramp to Main Street, the tear drop (roses and boxwood island) on Main Street, and the area surrounding the Holiday Tree. These areas receive water from an existing city groundwater well.

Another area that uses

groundwater is around the Clayton Community Library. This well, in addition to irrigating the library grounds, supplies the water to irrigate the Clayton Road landscape from the Oakhurst Drive intersection to the Mitchell Canyon Road intersection, along old Marsh Creek Road from Clayton Road to Main Street, at the Town Center Sign grounds, and at the Main Street tear drop island.

Napper also said that all landscaping supplied with water from CCWD must be watered only two days per week, with no watering between 9 a.m. and 5 p.m., no run-off, and breaks must be repaired as soon as possible.

"It's a big deal," said Clayton City Councilwoman Julie Pierce. "Luckily we have planted many drought-tolerant plants throughout the city, so we'll just have to see how they stand up to the hot summer months. I'm sure by September many of the plants and lawns in Clayton will be showing stress."

"It's a serious problem," she says. "We have to cut back."

OAKHURST CUTTING BACK

Also cutting back is the Oakhurst Country Club, said General Manager Tony Eichers. The golf course's fairways and the roughs will be watered just twice a week, with the greens and tees three times, but only in the evening hours.

"It actually will make the fairways harder, which make the balls go faster," he said. "Our users might like it better." Oakhurst buys well water from the City of Clayton, which allows for the additional watering.

"I think we'll be able to keep the greens in good shape, but it's the ancillary areas that will suffer," he said, including the patches of grass facing Clayton Road, and areas around the pool and tennis courts. They will be cut down to twice a week watering.

"We need to do our part, too, to conserve water," he said.

He doesn't foresee any fee adjustments because of the drought situation, but he will ask golfers to drive carts on the trails and not on the grass because that will distress the greens even more.