



AGENDA

* * *

TRAILS AND LANDSCAPING COMMITTEE [CITIZENS OVERSIGHT COMMITTEE]

MONDAY, January 11, 2016

7:00 p.m.

Hoyer Hall

Clayton Community Library City Hall

*6125 Clayton Road
Clayton, CA 94517*

COMMITTEE MEMBERS

Larry Casagrande (Chair)	Anthony Chippero
Christopher Garcia	Alyse Smith
Clayton Smith (Vice Chair)	Bob Steiner
Vice Mayor Jim Diaz (Ex-Officio/City Council Liaison)	
Councilmember Keith Haydon (Ex-Officio/City Council Liaison Alternate)	

- A complete packet of information containing staff reports and exhibits related to each item is available for public review in City Hall located at 6000 Heritage Trail on Monday prior to the Committee meeting.
- Agendas are posted at: 1) City Hall, 6000 Heritage Trail; 2) Library, 6125 Clayton Road; 3) Ohm's Bulletin Board, 1028 Diablo Street, Clayton; and 4) City Website at www.cityofclayton.org
- Any writings or documents provided to a majority of the Committee after distribution of the Agenda Packet and regarding any public item on this Agenda will be made available for public inspection in the City Clerk's office located at 6000 Heritage Trail during normal business hours.
- If you have a physical impairment that requires special accommodations to participate, please call the City Clerk's office at least 72 hours in advance of the meeting at (925) 673-7304.

* TRAILS AND LANDSCAPING COMMITTEE *

January 11, 2016

1. **CALL TO ORDER & ROLL CALL** – Chair Casagrande.

2. **PUBLIC COMMENTS ON NON-AGENDA ITEMS**

Any member from the audience may address the Committee on items within the Committee's jurisdiction, (which are not on the agenda) by completing a speaker card and forwarding it to the Chair. To assure an orderly meeting and an equal opportunity for everyone, each speaker is limited to 3 minutes, enforced at the Chair's discretion. When one's name is called by the Chair, the speaker shall advance to the public podium and adhere to the time limit. In accordance with State Law, no action may take place on any item not appearing on the posted agenda. The Committee may respond to statements made or questions asked, or may request Staff to report back at a future meeting concerning the matter.

Public comment and input on Consent Calendar, Public Hearing, Action Items and other Agenda Items will be allowed when each item is considered by the Committee.

3. **CONSENT CALENDAR**

*Consent Calendar items are typically routine in nature or informational and **are considered for approval by the Committee with one single motion.** Members of the Committee, Audience, or Staff wishing an item removed from the Consent Calendar for purpose of public comment, question or input may request so through the Chair.*

- (a) Approval of Action Minutes from the Committee regular meeting of June 8, 2015, March 16, 2015 and June 9, 2014.
- (b) Landscape Maintenance Staff Activity Report since June 8, 2015 (informational only)

4. **CONTINUED/OLD BUSINESS**

- (a) Adopt a Trail Program Status –*Committee member Garcia will provide verbal update at the meeting.*
- (b) Status report of the Landscape Maintenance District Projects
(Maintenance Supervisor Janney)
Recommended Action: Receive report.
- (c) Future Clayton Pioneer articles
(i.e.: pedestrian trail resurfacing/pedestrian trail bridges/subdivision entries redesigns)
- (d) Measure B reauthorization: confirm prior direction to move forward with ballot in June 2016 election, and consider establishment of ad hoc committee to work on ballot measure education information
Recommended Action: Recommend to City Council June election and select up to four committee members

5. NEW BUSINESS

- (a) Citizens Oversight Committee Annual Report for FY 2014/15
(Chair Casagrande. Committee Member Steiner)
Recommended Action: Hear report, provide comments, and take action to approve submittal to the City Council.
- (b) Review of the status Landscape Maintenance District FY 15/16 budget as the Citizens Oversight Committee for Measure B.
(Asst. to the City Manager Hoffmeister and Maintenance Supervisor Janney)
Recommended Action: Hear report, provide comments.
- (c) Review of conceptual redesign of subdivision entries.
Recommended Action: Provide comments and feedback to staff and City Council

6. CORRESPONDENCE – review of incoming and outgoing correspondence:

- (a) Review request by Clayton resident Candace Bass to have City install and maintain no smoking signs along city trails.
Recommended Action: Informational only.

7. COMMITTEE ITEMS – limited to requests and directives for future meetings:

- (a) Assignment of Committee Report: select TLC member to provide verbal update report and report at the City Council at its January 19, 2016 meeting.
- (b) Future Agenda Items: (all future agendas will include minutes; status on Adopt a Trail; Maintenance Work Status Report for the District; Deferred projects status report)

January 19, 2016 – recommendation on Ballot measure to City Council

Feb/March 2016 – mid-year FY 15/16 budget status; selection of TLC Chair and Vice Chair; LMD revenue measure reauthorization information education outreach

March/April/May: continuation LMD revenue measure reauthorization information education outreach

April 23: Clayton Cleans Up (9am to Noon)

Late May/early June 2016 – proposed landscape District Budget for FY 2016/17

Note: June 7 election day

September/October 2016- FY 2015/16 TLC prepare/ approve draft Annual Report

October/November 2016 – present FY 2015/16 Annual Report to City Council

- (c) Committee Member communications – informational items/announcements that TLC members would like to share
- (d) Staff Communications/Announcements – Updated TLC Roster; Clayton Cleans Up/Community Events Calendar

- 8. ADJOURNMENT– The Committee's next regularly-scheduled meeting is as needed however is anticipated to be in February or March 2016 at 7:00 p.m. in Hoyer Hall, Clayton Community Library. Please contact the City Clerk at 673-7300 to verify actual date.**

Agenda Date: Jan 11, 2016

Agenda Item: 3a

**Minutes of the TLC meeting of
June 10, 2015, March 16, 2015 and June 9, 2014
not yet completed and available**

Agenda Date: Jan. 11, 2016

Agenda Item: 3b



WORK UPDATE TRAILS & LANDSCAPING

6/8/2015 to 1/11/2016

- Spot spray and pull weeds in the Landscape District Citywide on a continuing basis.
- All Irrigation is turn off for the winter in the Landscape District, over the summer months the City Staff was able to meet the 45% water reductions that had been mandated by Contra Costa Water District because of the continuing drought conditions. To meet this cut back irrigation leaks were repaired immediately and all water meters were read every two weeks with adjustments made to water schedules if needed to meet water allotment goals. Unfortunately there was some plant loss in the landscaping including trees, shrubs, and ground cover from the four years of drought conditions.
- Continued our semi-annual trimming of the Landscape in the following areas; Clayton Road outbound from Mitchell Canyon Road to City Limits, Oakhurst Drive from Clayton Road to the City Limits in bound and out bound, Eagle Peak from Oakhurst Drive to Keller Ridge Drive, Post Office Trail, Marsh Creek Road from Clayton Road to Center Street, Black Diamond Plaza and Trail.
- Had the following area trees trimmed/removed; Marsh Creek Road between Regency Drive and Regency Meadows safety trimmed Stone Pines, Elevated trees and remove five dead pines along Concord Avenue in the open space, removed dead trees and lifted trees on the hillside behind the Cities Maintenance Yard for fire abatement, removed a dead tree along Southbrook Trail.

Adopt a Trail updated as of 3/10/15

Adopters/Revenues

<u>Name</u>	<u>Sponsor Type</u>	<u>Trail Section</u>	<u>Amount Recvd</u>	<u>Date \$ Recvd</u>	<u>Ag. recvd</u>	<u>Start Date</u>	<u>Expiration Date</u>
Sudderth Family CBCA	Volunteer Labor	Cardinet Trail (Library - Lydia Ln Pk)	\$200	8/12/2013	Yes	9/1/2013	3/1/2015
	Financial Sponsor	Cardinet Trail (Library - Lydia Ln Pk)	\$1000	8/12/2013		9/1/2013	3/1/2015
Passport2Clayton (P2C)	Volunteer Labor	Bruce Lee Trail (Upper Easley Trail)	\$200	2/1/2011	Yes	3/1/2011	3/1/2012
	Financial Sponsor	Bruce Lee Trail (Upper Easley Trail)	\$1000	2/1/2011		3/1/2011	3/1/2012
Employees of CD Federal Credit Union Discovery Builders	Volunteer Labor	Blue Oak Trail	\$200	2/9/2011	Yes	3/1/2011	3/1/2012
	Financial Sponsor	Blue Oak Trail	\$1000	2/17/2011		3/1/2011	3/1/2012
Stegel Family <u>Available</u>	Volunteer Labor Financial Sponsor	Lower Easley Trail Lower Easley Trail	\$250	1/7/2013	Yes	TBD	TBD
<u>Available</u> <u>Available</u>	Volunteer Labor Financial Sponsor	Cardinet Trail (Lydia Ln Pk - Westwood Pk) Cardinet Trail (Lydia Ln Pk - Westwood Pk)					
<u>Available</u> <u>Available</u>	Volunteer Labor Financial Sponsor	Donner Creek Trail Donner Creek Trail					

Adopt a Trail Expenses

<u>Date</u>	<u>purpose</u>	<u>Amount</u>
3/8/2009	19.5 hrs maintenance temp labor make/ install signs	\$219.00
4/17/2009	materials for sign posts	\$1527.34
6/23/2009	signs printing (bay area barricade)	\$98.87
6/30/2009	t-shirts	\$289.51
8/9/2009	wood for future sign posts (Dolan's Lumber)	\$595.15
8/9/2009	sign printing (Bay Area Barricade)	\$10.93
5/14/2010	Clayton Pioneer Ad	\$200.00
8/31/2011	sign re-screening	\$10.82
8/31/2011	Signs (Bay Area Barricade)	\$209.35
8/31/2011	27 hrs maintenance reg/temp labor make/install signs	\$1116.80
11/30/2011	Oak tree lights (trail by library)	\$3305.98
11/30/2011	electric wire and parts for oak tree lights (trail by Library)	\$437.00
12/30/2011	17 hrs reg/temp labor install oak tree lights (trail by library)	\$697.00
<u>Additional expenses for latest adopters signs and installation unknown</u>		<u>TBD</u>
Total Expenses to date (NOT including outstanding expenses for latest signs and relocation)		\$8717.75

Donations

Renewal and New as of 6/30/14	\$1450
Prior donations	\$9250
	\$10,700

6/30/2014 Account Balance: \$10,700-\$8715.75 = **\$1982.25** (this amount will be reduced based upon outstanding expenses yet to be determined)

Agenda Date: Jan. 11, 2016
 Agenda Item: 4a



ADOPT A TRAIL



The program aims to:

- Augment financing provided by Measure B the voter approved Landscape Maintenance District, all funds from program sponsors and volunteers also known as adopters are used for the program and trail system maintenance only.
- Provide a venue for volunteers to help Clayton maintain and enhance its trail network
- Make the trails cleaner
- Celebrate the sponsors and volunteers that help Clayton keep the trail network one of the distinguishing characteristics of our community
- Foster civic pride through volunteerism, philanthropy, and cleanliness

The Trails and Landscape Committee has initially identified 11 trail segments to adopt. Each segment has a financial adopter and a clean-up adopter. Besides paying the every two year fee (\$1,000 for financial adopters and \$200 for clean-up adopters), clean-up groups must identify a leader/contact person and complete the attached form. Adopters are recognized on their trail segment with a name plaque on a trail marker. Markers are installed at the time a financial sponsor is found for that trail segment.

Segments are assigned on a first-come, first-served basis. Adopters wanting recognition on the trail markers must also provide information that conforms to the city design specs for the markers.

If you are interested in participating in this program or would like additional information please contact Committee member **Christopher Garcia** at email: chrisLgarcia@hotmail.com



City of Clayton
Clayton Adopt-a-Trail Program

APPLICATION

Date: _____

Adopt-a-Trail Group: _____

TYPE OF Sponsor (circle one)

Financial

Labor-Clean Up

Group Contact: _____

Contact's Mailing Address: _____

Phone Number: _____ Email: _____

Requested Segment to
Adopt: _____

Tentative Start Date: _____

Average number of volunteers per work day: _____

STATEMENT OF AGREEMENT

As representative of this organization, I have read and agree to abide by the policies, regulations and safety recommendations as put forth by the City of Clayton's Public Works and Engineering Department. I understand that this is an application for the Adopt-a-Trail program and that a representative from the city will contact me to finalize an agreement. I understand that the Department will make the final determination as to whether a group can participate and the final segment assignment designation. I understand that each volunteer must sign a City of Clayton Voluntary Service Agreement and Liability Waiver before participating in the program. Finally, I understand that the city reserves the right to terminate this agreement at any time.

Adopter/sponsor Group Coordinator -Contact

Name print

(signature/date)

ADOPT-A-TRAIL WORK PLAN : Sponsor/Adopter Name _____

Proposed Program Plan for: _____
[Insert Trail Segment Name]

Adopt-a-Trail Projects could include but are not limited to the following items, please mark all that apply to your project. This must be approved by the Department of Public Works and Engineering before work can begin.

Suggested Project Items

- Pick up litter and debris (required)
- Remove weeds (required)
- Raking and sweeping (required)
- Minor repairs of surfaces/furnishings
- Other _____
- Monitor/report maintenance needs (req)
- Plant trees*
- Plant and maintain flowerbeds*

* The planting of all flowers, trees and other plants must be pre-approved by the city. Support for special projects by adopting organizations will be arranged through the Trails and Landscaping Committee.

WORK SCHEDULE

Each group is required to have at least one work day every 4 months (total of 3 per year). Please list tentative dates for each work day. You will be expected to inform the Department of any date changes **at least 2 weeks in advance.**

Work Day #1 _____	Additional Work Days _____
Work Day #2 _____	_____
Work Day #3 _____	_____

Name(print)

Trails Landscape Committee member Name (print)

(signature/date)
Financial and/or Volunteer Clean up
Group Coordinator

(signature/date)
Trails and Landscaping Committee member

POLICIES

- The city will provide necessary trash bags, debris pickup, and hauling to ensure the success of ongoing tasks.
- Adopting organizations may keep and haul away for resale off site all recyclable trash they pickup.
- No one under the age of 14 may participate without adult supervision.
- While performing services at special project sites adopters will conform, at a minimum to the State of California Standard Specifications for hours of work, noise abatement, traffic control, erosion control, fire protection and management of materials.

(signature/date)

Group Coordinator

(signature/date)

[for the Trails and Landscaping Committee]

**Please return application to Christopher Garcia, Trails and Landscape Committee member c/o Clayton City Offices, 6000 Heritage Trail, Clayton CA 94517
For questions, please contact Christopher Garcia at chrisLgarcia@gmail.com**

Payment received: _____
Date

By: _____



EXAMPLE OF TRAIL MAKERS WITH ADOPTER/SPONSOR PLAQUE

CITY OF CLAYTON

Peacock
Creek
Trail



1.27 Miles

Trail Grade
75% Steep
25% Level

Surface
Crushed Granite

This Trail Segment Adopted By:

COMCAST
Cable

Clayton Valley
Little League

12" overall
sign
height

6" total sign width



8" x 8" wood mitered routed post w/metal sign
(brown background/white lettering) mounted inset onto post

Pass

Rd

Hess Rd

Kirker Pass 920

Entrance

Concord Pavilion

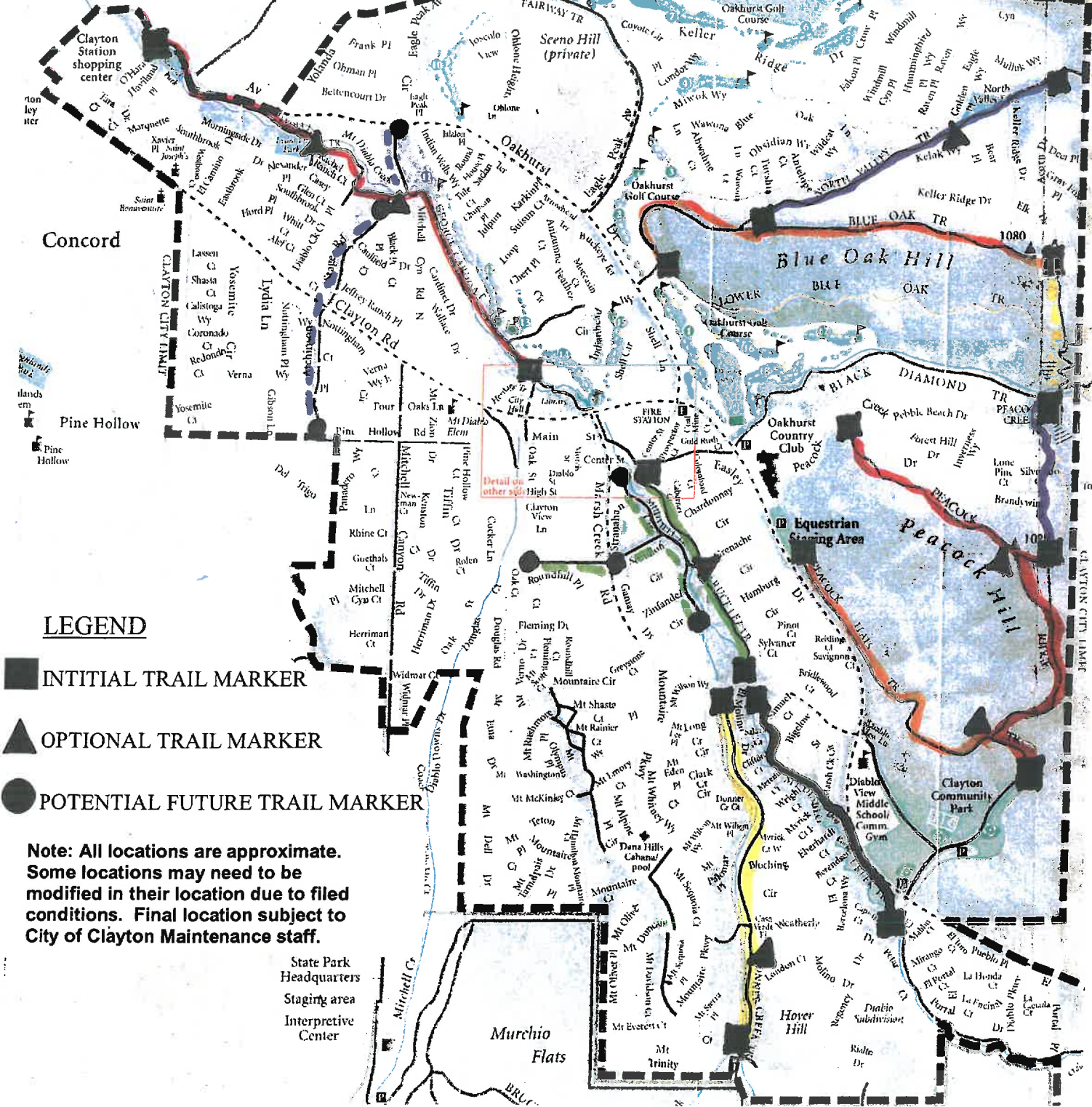
1033

Kirker

Kirkwood Dr

Concord

CLAYTON CITY LIMIT



Concord

Pine Hollow

LEGEND

- INITIAL TRAIL MARKER
- ▲ OPTIONAL TRAIL MARKER
- POTENTIAL FUTURE TRAIL MARKER

Note: All locations are approximate. Some locations may need to be modified in their location due to filed conditions. Final location subject to City of Clayton Maintenance staff.

State Park
Headquarters
Staging area
Interpretive
Center

Murchio Flats

Hoyer Hill

El Paso Pueblo Pl
La Honda Ct
La Francis Pl
Diablo Flats
Diablo Flats
Diablo Flats

Memo

To: Trail and Landscaping Committee
From: Maintenance Department
Date: January 11, 2016
Re: Project Updates

This is an update for the following projects within the Clayton Landscape District:

1. The replacement of the Pedestrian Trail Bridges wood planking has been completed. There were seven bridges that had the decking removed and replaced. This project was completed in mid-December.
2. The lower Easley Trail was over lay with a new asphalt pavement surface. This project was completed over the summer months. This section of trail was from Zinfandel Circle in lower Easley subdivision to the shopping center parking lot by the Stranahan subdivision.
3. Drainage and Trail repairs were made on the Elementary School Hill. This include installing a small retaining wall, repair of header board along trail, installation of new drainage, and patching of the existing asphalt trail. This was a joint project between the Mount Diablo School District and the City to make repairs to the trail and improvement to the drainage coming off the school property.
4. City Staff has drawn up some re-design concepts for review of the Subdivision Entry Landscape Project. This project had been recommended and approved by the Trails and Landscape Committee in a previous meeting to be the next landscape improvement project within the District. The next step after review of the designs is to make have City Council review and then formal plans and specification for project bidding.
5. City Staff is currently preparing the specifications for the needed repairs to the downtown planter boxes, with repairs scheduled for late winter or early spring.
6. The Keller Ridge Tree Re-Plant Project was put on hold with the continuing drought and water restrictions. Now with the drought conditions are possible easing this year City Staff is planning on getting the specifications and plans ready for bidding. If the drought outlook does improve over the winter and spring with water restrictions being relaxed then this project will move forward. If drought restrictions continue the bidding will be placed on hold until conditions allow for going forward.

Pedestrian Trail Bridge Surface Replacement Project



Before – decay wood

Pedestrian Trail Bridge Surface Replacement Project



After replacement of wood deck

Lower Easley Trail Repaving Project – Completed



Lower Easley Trail Reconstruction-Repaving

Before



After



SCHOOL TRAIL RENOVATION



BEFORE



AFTER

Memo

To: Honorable Chair and Trails and Landscaping Committee members

From: Laura Hoffmeister, Assistant to the City Manager

Meeting Date: January 11, 2016

RE: Discussion of future Trails and Landscape Committee articles in the Clayton Pioneer

Background:

The articles began with the Blue Ribbon Committee, then continued with the Measure M committee, then the Measure B advocacy committee, then back again as the TLC Outreach Subcommittee. For the last few years there has not been articles written by anyone from the TLC, the only coverage has been if the Pioneer staff does on its own. It seems that with the upcoming June election where the voters are to be asked if they would like to continue the special tax funding for the Landscape Maintenance District, it would be possible to have informational articles written by TLC members which could highlight some of the accomplishments of the District with the use of the publicly approved special tax funds.

The Clayton Pioneer provides the free copy space provided the text is written by a TLC member. The paper comes out monthly and counting February there would be 4 editions prior to the June.

Article topics were left to the discretion of the writer with the general direction by the TLC that they would either pertain to the Committee and its work or information/issues of the Landscape Maintenance District of which the TLC is the oversight body. Topics were then submitted to city staff and Clayton Pioneer editor for review/acceptance prior to submission of the final article which a draft was reviewed by city staff. provided a draft text to city staff for review prior to final submission to the Clayton Pioneer. Staff is available to provide review of the draft and any technical or background information that might be needed to assist in the article preparation. As before, city staff does not have the time to actually write the article. Should the TLC members be interested in continuing article(s) they would need to be prepared by a TLC member. The Clayton Pioneer editor reserves final editing rights for space and flow.

Current status:

Staff has in the past suggested that the article writing can be rotated among the TLC members. To date AJ Chippero had expressed an interest in drafting up articles however no other TLC members have expressed an interest in assisting.

Going forward/Topic ideas:

The following ideas could be used for articles: Pedestrian Trail Bridge surface replacement; trail reconstruction/repaving; Elementary School pedestrian trail reconstruction and drainage improvements; subdivision entry redesign concepts. Although covered by the Pioneer in prior articles the new median design and planting of Clayton Road from Mitchell Canyon to Oakhurst Blvd.; replanting of Oakhurst median and redesign of Clayton Water Feature; joint CBCA replanting project of Dafidol Hill (Clayton entry to downtown across from Library; and trail connection from downtown to CVS on Clayton Road could be covered.

Replacement Projects Landscape Maintenance District (Measure B approved June 2007 duration 2007-08 through 2016-17)	amount -apx.	year -apx
Completed:		
Landscaping		
mediain tree replacement clayton road mitchell cyn to Atchinson stage (14 sycamore trees) donations paid for these	\$2,500	2008
Oakhurst Drive decorative pavers in narrow median noses, redo irrigation and replanting	\$70,000	2010
Clayton Water Feature replanting/redo irrigation	\$114,000	2010
March Creek Circle landscape berm mitigation irrigation upgrades replanting	\$19,400	2011
Clayton Road median (Oakhurst to Mitchell Cyn) and retaining wall from CVS to Daffodil Hill irrigation installation and new landscaping	328,011	2012
Daffodil Hill new irrigation and new planting (\$27,500 donated by CBCA)	\$29,000	2012
Deferred Tree Trimming City Wide (annually)	\$20,000	2010-2016
Trails:		
Peacock Creek install new headboards, apply new 1/4 x dust gravel and compact, install waterboard weir drainage	\$ 20,000	2008
Upper Easley - Bruce Lee - Trail from ___ to Center Street ; and Lower Easley - El Molino- from old Marsh Ck rd to _____	\$60,000	2013
trail crack sealing/repair	\$10,000	2013
Lower Easley	\$30,000	2015
Mt Diablo Elem School Hill Trail	\$ 19,800	2015
pedestrial Trail Bridge surface replacement	\$ 79,000	2015
Other:		
Purchase New Irrigation Control Vehicle (Capital Equipment and Replacment Fund)	\$ 35,000	2007/08
open space tree canopy trim and lifting	\$ 30,000	2012/13-15
Adopt a Trail (from donations only)		
trail sponsorship signs and plaques (incl posts/signs and installation)	\$3,827	2009
installation of new uplights and electrical at oak trees - cardinet trail east side of library	\$4,400	2011/12
To be done:		
Landscaping		
Keller Ridge Drive street tree replacements	\$46,000	2016
Jeffry Ranch Ct island replant/hardscape	\$6,000	2016
various subdivision entry redesign relandscape including hardscape	\$300,000	2016
downtwn planter boxes	\$35,000	2016
Other:		
Master Remote Computer Controller for all Irrigation Systems	\$30,000	2012/13
replace irrigation system central control field panel	\$20,000	2016
total reinvestment to Landscape Maintenance District proejects through 12/31/15	\$904,938	
total additional reinvestment planned through 2016-17	\$407,000	
total est reinvestment through 6/30/17	\$1,311,938	
<i>Laura/tlc capital projects status measure b</i>		



Agenda Date: Jan. 11, 2016

Agenda Item: 4d

Memo

To: Trails and Landscape Committee
From: Asst. to the City Manager
Date: January 11, 2016
Re: Landscape Maintenance District Renewal of CFD 2007

The Trails and Landscape Committee considered and reviewed at its March 16, 2015 meeting and June 6, 2015 making a recommendation to the City Council of placing on the June 7, 2016 ballot a measure for the voters to consider extending the Landscape Maintenance District special tax called Community Facilities District 2007-1. This special tax was established by the voters in June 2007. The tax had a 10 year time limit, unless revote by the electorate. The tax is a special tax which requires 66.66% of the votes cast to be in favor to pass. In June 2007 it received 82.94% support. This is the final meeting for the TLC to discuss and finalize its recommendation to the City Council. The City Council will be discussing this matter at its January 19, 2016 meeting.

At the March and June meeting the TLC considered alternative time frames of 15 and 20 years in addition to the 10 years. The TLC also discussed if different funding methodology should be used. After discussion at the June meeting, the TLC felt the 10 year time frame was better as it was consistent with what the voters previously approved. Also identified was a longer period might lock down a rate where change might be needed after 10 years.

The TLC also expressed a preference for keeping the same methodology, as a different methodology (establishing a higher base rate to start with or higher annual adjustment) require additional time to prepare the needed information, and potentially more uncertainty with the voters as to the change. TLC indicated by keeping the same methodology etc. there would be less uncertainty with voters and a potential higher potential of passage. Staff has provided the above summary so that the TLC can confirm their preference as this is the last time to consider prior to moving forward to the City Council. TLC also asked for staff to bring back the annual levy rate history and rate increases under the current methodology for final confirmation of their preference/direction. Staff has also prepared three options for discussion of potential ballot wording should the TLC also like to provide input to the City Council.

Attached is a draft schedule of the time frame that would be involved for placing a ballot measure before the voters, the history of the annual tax levy amount and increases. [Note the current methodology specifies that the annual rate may increase by the CPI not to exceed 3% annually. The history shows that over the last 9 years the CPI rate did not exceed 3% the amount varied from a low of 0.8% to a high of 2.88%.

Staff has also attached the prior (June 2007) ballot information including election results, ballot wording, methodology, attorney impartial analysis, and map as background.

The Trails and Landscape Committee, acting as the Measure B Citizens Oversight Committee, will need to provide a final recommendation to the City Council regarding the expiration of the current tax and placing a measure before the voters in 2016 for a new tax, i.e.: continuation of the current tax, the rate and methodology.

The recommendation of the TLC should include:

- Should there be a measure be placed before the voters in June 2016?

[Alternatively if done in November 2016 and fails there would not be another opportunity without another source of funds available to maintain the current roadway landscaping and trails maintenance]

If a measure is placed before the voters in June 2016:

- What should the duration be? (The current time frame was for 10 years, options include 5, 10, 15 years or 20 years).

The TLC previously indicated a preference for 10 years same as the current measure.

- What should be the amount (continue with same rate and same formula or different base amount and formula).

The TLC previously indicated a preference for keeping the same rate and methodology formula – ie: residential at same rate; non-residential at the base rate for each acre or fraction thereof, with an annual increase the CPI but not to exceed 3% annually.

- Does the TLC want to recommend a preference on ballot wording

[Note: The City Council will make the final ballot wording].

Staff has prepared three ballot wording options for review and discussion.

- Does the TLC want to establish an Ad Hoc committee to work on ballot measure education information (education and outreach not advocacy).

This could include articles in the paper, attending community events and community meetings such as Clayton Cleans Up, Art and Wine, CBCA, Rotary etc., with informational handout materials and informational photo display showing actions taken by the LMD over since 2007.

Landscape Maintenance District Levy History CFD 2007-1 (approved Nov 2007 for 10 yrs 2007/08-2016/17)										
	start									
Year	2007/08	2008/09	2009/10	2010/11	2011/12	2012/13	2013/14	2014/15	adopted 2015/16	TBD in July 2016/17
levy amount (per res parcel and non res per acre or fraction thereof)	\$ 196.76	\$ 202.44	\$ 204.06	\$ 207.56	\$ 213.42	\$ 217.86	\$ 223.04	\$ 229.29	\$ 234.84	
actual cpi	n/a	2.88%	0.8%	1.72%	2.82%	2.08%	2.38%	2.78%	2.44%	
cpi amount increase	n/a	2.88%	0.8%	1.72%	2.82%	2.08%	2.38%	2.78%	2.44%	
\$ amount increase	n/a	\$ 5.68	\$ 1.62	\$ 3.50	\$ 5.86	\$ 4.44	\$ 5.18	\$ 6.22	\$ 5.58	
note: levy limited to annual increase of CPI not to exceed 3%										

Replacement Projects Landscape Maintenance District (Measure B approved June 2007 duration 2007-08 through 2016-17)	amount -apx.	year -apx
Completed:		
Landscaping		
mediain tree replacement clayton road mitchell cyn to Atchinson stage (14 sycamore trees) donations paid for these	\$2,500	2008
Oakhurst Drive decorative pavers in narrow median noses, redo irrigation and replanting	\$70,000	2010
Clayton Water Feature replanting/redo irrigation	\$114,000	2010
March Creek Circle landscape berm mitigation irrigation upgrades replanting	\$19,400	2011
Clayton Road median (Oakhurst to Mitchell Cyn) and retaining wall from CVS to Daffodil Hill irrigation installation and new landscaping	328,011	2012
Daffodil Hill new irrigation and new planting (\$27,500 donated by CBCA)	\$29,000	2012
Deferred Tree Trimming City Wide (annually)	\$20,000	2010-2016
Trails:		
Peacock Creek install new headboards, apply new 1/4 x dust gravel and compact, install waterboard weir drainage	\$ 20,000	2008
Upper Easley - Bruce Lee - Trail from ___ to Center Street ; and Lower Easley - El Molino- from old Marsh Ck rd to _____	\$60,000	2013
trail crack sealing/repair	\$10,000	2013
Lower Easley	\$30,000	2015
Mt Diablo Elem School Hill Trail	\$ 19,800	2015
pedestrial Trail Bridge surface replacement	\$ 79,000	2015
Other:		
Purchase New Irrigation Control Vehicle (Capital Equipment and Replacment Fund)	\$ 35,000	2007/08
open space tree canopy trim and lifting	\$ 30,000	2012/13-15
Adopt a Trail (from donations only)		
trail sponsorship signs and plaques (incl posts/signs and installation)	\$3,827	2009
installation of new uplights and electrical at oak trees - cardinet trail east side of library	\$4,400	2011/12
To be done:		
Landscaping		
Keller Ridge Drive street tree replacements	\$46,000	2016
Jeffry Ranch Ct island replant/hardscape	\$6,000	2016
various subdivision entry redesign relandscape including hardscape	\$300,000	2016
downtwn planter boxes	\$35,000	2016
Other:		
Master Remote Computer Controller for all Irrigation Systems	\$30,000	2012/13
replace irrigation system central control field panel	\$20,000	2016
total reinvestment to Landscape Maintenance District proejects through 12/31/15	\$904,938	
total additional reinvestment planned through 2016-17	\$407,000	
total est reinvestment through 6/30/17	\$1,311,938	
<i>Laura/tlc capital projects status measure b</i>		

MEASURE TO BE VOTED ON

NOTICE OF SPECIAL MEASURE ELECTION FOR THE CITY OF CLAYTON AND NOTICE OF DATE FIXED FOR SUBMITTING ARGUMENTS

NOTICE IS HEREBY GIVEN to the qualified electors of the City of Clayton, located in the County of Contra Costa, State of California, that in accordance with law, an election will be held on **Tuesday, the 7th day of June, 2016**, for the purpose of submitting for approval or rejection the following measure, to be displayed on each individual ballot to wit:

CITY OF CLAYTON CITYWIDE LANDSCAPE MAINTENANCE DISTRICT FUNDING EXTENSION OF EXISTING SPECIAL TAX	
To continue the operation and maintenance of the Citywide Landscape Maintenance District, shall the existing special tax, funded by the citywide Community Facilities District 2007-1 levy, be extended at the current annual special tax with the same methodology rate (currently \$234.84 per year for single-family residential parcels, and per non-residential acre or fraction thereof) for Fiscal Years 2017/2018 through 2026/2027? (75 words maximum) 60 words option 1	YES
	NO

Arguments for or against this measure may be submitted to the City Clerk, 6000 Heritage Trail, Clayton, CA, **no later than 5:00 P.M., March 23, 2016**, which has been determined by the elections official to be a reasonable date based upon the time necessary to prepare and print arguments. **No argument shall exceed 300 words in length.** Arguments must follow the following format:

1. Arguments should be in block form, however, bulleted lines will be allowed.
2. Your cooperation is requested in limiting the use of *italics*, **bold-faced type**, underlining and "ALL CAPITAL LETTER" WORDS.
3. Statements must be typed or word processed in standard upper and lower case.

A Statement That Argument is **True** and Correct, signed by the authors must accompany all arguments; a sample of this form is available by calling the City Clerk.

Pursuant to Section 9287 of the Elections Code, one argument for and one argument against this measure will be selected for printing and distribution to the voters with the sample ballot.

The elections official will provide an opportunity for rebuttal arguments in accordance with Section 9285 of the Elections Code. **Rebuttal arguments shall not exceed 250 words** and must be filed **no later than 5:00 P.M., March 28, 2016**.

For more information on filing arguments, call the City Clerk at (925) 673-7300.

The polls will be open Election Day between 7:00 A.M. and 8:00 P.M.

Dated: March 7, 2016

Published: March 11, 2016

/s Janet Brown,
City Clerk, City of Clayton

NOTA:

Si desea obtener la versión en Español de este aviso legal, puede solicitar una copia de la misma llamando al Departamento de Elecciones, (925) 335-7800.

MEASURE TO BE VOTED ON

NOTICE OF SPECIAL MEASURE ELECTION FOR THE CITY OF CLAYTON AND NOTICE OF DATE FIXED FOR SUBMITTING ARGUMENTS

NOTICE IS HEREBY GIVEN to the qualified electors of the City of Clayton, located in the County of Contra Costa, State of California, that in accordance with law, an election will be held on **Tuesday, the 7th day of June, 2016**, for the purpose of submitting for approval or rejection the following measure, to be displayed on each individual ballot to wit:

CITY OF CLAYTON CITYWIDE LANDSCAPE MAINTENANCE DISTRICT FUNDING EXTENSION OF EXISTING SPECIAL TAX	
Shall the existing Community Facility District 2007-1 (Citywide Landscape Maintenance District) be extended for a period of ten years to continue the operation and maintenance of public roadway landscaping, trails system, open space weed abatement and related costs, at the current annual special tax with the same methodology rate (currently \$234.84 per year for single-family residential parcels, and per non-residential acre or fraction thereof) for Fiscal Years 2017/2018 through 2026/2027? (75 words maximum) 70 words option 2	YES
	NO

Arguments for or against this measure may be submitted to the City Clerk, 6000 Heritage Trail, Clayton, CA, **no later than 5:00 P.M., March 23, 2016**, which has been determined by the elections official to be a reasonable date based upon the time necessary to prepare and print arguments. **No argument shall exceed 300 words in length.** Arguments must follow the following format:

1. Arguments should be in block form, however, bulleted lines will be allowed.
2. Your cooperation is requested in limiting the use of *italics*, **bold-faced type**, underlining and "ALL CAPITAL LETTER" WORDS.
3. Statements must be typed or word processed in standard upper and lower case.

A Statement That Argument is **True** and Correct, signed by the authors must accompany all arguments; a sample of this form is available by calling the City Clerk.

Pursuant to Section 9287 of the Elections Code, one argument for and one argument against this measure will be selected for printing and distribution to the voters with the sample ballot.

The elections official will provide an opportunity for rebuttal arguments in accordance with Section 9285 of the Elections Code. **Rebuttal arguments shall not exceed 250 words** and must be filed **no later than 5:00 P.M., March 28, 2016**.

For more information on filing arguments, call the City Clerk at (925) 673-7300.

The polls will be open Election Day between 7:00 A.M. and 8:00 P.M.

Dated: March 7, 2016

Published: March 11, 2016

/s Janet Brown,
City Clerk, City of Clayton

NOTA:

Si desea obtener la versión en Español de este aviso legal, puede solicitar una copia de la misma llamando al Departamento de Elecciones, (925) 335-7800.

MEASURE TO BE VOTED ON

NOTICE OF SPECIAL MEASURE ELECTION FOR THE CITY OF CLAYTON AND NOTICE OF DATE FIXED FOR SUBMITTING ARGUMENTS

NOTICE IS HEREBY GIVEN to the qualified electors of the City of Clayton, located in the County of Contra Costa, State of California, that in accordance with law, an election will be held on **Tuesday, the 7th day of June, 2016**, for the purpose of submitting for approval or rejection the following measure, to be displayed on each individual ballot to wit:

CITY OF CLAYTON CITYWIDE LANDSCAPE MAINTENANCE DISTRICT FUNDING EXTENSION OF EXISTING SPECIAL TAX	
To continue the operation and maintenance of public roadway landscaping, trails system, open space weed abatement and related costs funded by the existing citywide Community Facility District Landscape District 2007-1 levy, be extended at the current annual special tax with the same methodology rate (currently \$234.84 per year for single-family residential parcels, and per non-residential acre or fraction thereof) for Fiscal Years 2017/2018 through 2026/2027?	YES
	NO
(75 words maximum) 65 words option 3	

Arguments for or against this measure may be submitted to the City Clerk, 6000 Heritage Trail, Clayton, CA, **no later than 5:00 P.M., March 23, 2016**, which has been determined by the elections official to be a reasonable date based upon the time necessary to prepare and print arguments. **No argument shall exceed 300 words in length.** Arguments must follow the following format:

1. Arguments should be in block form, however, bulleted lines will be allowed.
2. Your cooperation is requested in limiting the use of *italics*, **bold-faced type**, underlining and "ALL CAPITAL LETTER" WORDS.
3. Statements must be typed or word processed in standard upper and lower case.

A Statement That Argument is **True** and Correct, signed by the authors must accompany all arguments; a sample of this form is available by calling the City Clerk.

Pursuant to Section 9287 of the Elections Code, one argument for and one argument against this measure will be selected for printing and distribution to the voters with the sample ballot.

The elections official will provide an opportunity for rebuttal arguments in accordance with Section 9285 of the Elections Code. **Rebuttal arguments shall not exceed 250 words and must be filed no later than 5:00 P.M., March 28, 2016.**

For more information on filing arguments, call the City Clerk at (925) 673-7300.

The polls will be open Election Day between 7:00 A.M. and 8:00 P.M.

Dated: March 7, 2016

Published: March 11, 2016

/s Janet Brown,
City Clerk, City of Clayton

NOTA:

Si desea obtener la versión en Español de este aviso legal, puede solicitar una copia de la misma llamando al Departamento de Elecciones, (925) 335-7800.

**Schedule for Extending Special Tax in Community Facilities District 2007-001
(City-wide Landscape Maintenance District Special Tax) revised 1/08/16**

June 7, 2016 Election

- | | |
|----------------------------|---|
| January 11, 2016 | TLC confirms their direction from their June 8 2015 meeting and completes recommendation to City Council for consideration of the special tax and staff to begin the extension process. |
| January 19, 2016 | City Council reviews proposal and recommendation from the TLC to extend the special tax and provides direction to staff to begin the extension process. |
| January 19, 2016 | City Council adopts Resolution of Consideration to extend the special tax. (Gov. Code, § 53331) This resolution schedules a public hearing regarding the potential extension to be held on March 1 st (hearing must occur between 30-60 days from the date of the January 19 resolution). The City Council can also begin to review ballot language at this meeting if it wishes. |
| On or by February 17, 2016 | City Clerk to send in notice to newspaper for publishing. |
| On or by February 23, 2016 | notice of the March 1, 2016 public hearing on the proposed tax extension is published in a newspaper of general circulation. (Gov. Code, §§ 53322, 53335.)- Requires publishing 7 days prior to hearing. The City may (but is not required to) mail notice to all voters. (Gov. Code, § 53322.4.) [staff not recommending mailing – we did not mail last time; publish only] |
| March 1, 2016 | City Council holds a public hearing on the proposed tax extension. Assuming less than a majority of eligible voters protest the tax, the City Council may schedule an election to approve the tax extension. At this meeting, the City Council may place the tax extension on the ballot, direct the City Attorney to prepare an impartial analysis and authorize one or two Councilmembers to prepare ballot arguments. If the City Council continues its discussion of the measure to a future meeting after March 1 st , if so they would have to hold a special meeting after March 1 st and prior to March 11 to final the ballot measure wording. |
| March 7, 2016 | Submit notice of election and ballot Measure wording to paper for publish on or before March 11, 2016. |
| March 11, 2016 | Deadline to place the tax extension measure on the ballot. This is only an issue. Publish date of election notice and ballot Measure in paper. |
| March 15, 2016 | City Council meeting – optional can review city attorney impartial analysis and initial argument for submittal to county elections by March 18 and March 23 respectively. |
| March 16, 2016 | Deadline to modify or remove the tax extension measure from the ballot. |
| March 17, 2016 | Ballot Measure Letter Assignment from County Elections office |
| March 18, 2016 | Deadline for impartial analysis to be submitted to the County. |
| March 23, 2016 | Deadline for initial arguments to be submitted to the County. |
| March 28, 2016 | Deadline for rebuttal arguments to be submitted to the County. |
| April 28, 2016 | Sample voter guide mailing/absentee mailing |
| June 7, 2016 | Election Day. Measure must receive 2/3 voter approval to pass. |

November 2016 Election – tentative (only if June election not successful)

June 13, 2016	TLC reviews options and completes recommendation of extension for City Council consideration of the special tax and staff to begin the extension process.
June 21, 2016	City Council reviews proposal to extend the special tax and provides direction to staff to begin the extension process.
July 5, 2016	City Council adopts Resolution of Consideration to extend the special tax. (Gov. Code, § 53331) This resolution schedules a public hearing regarding the potential extension that must occur between 30-60 days from the date of the resolution. The City Council can also begin to review ballot language at this meeting if it wishes.
On or by July 26, 2016	City Clerk publishes notice of the public hearing on the proposed tax extension in a newspaper of general circulation. (Gov. Code, §§ 53322, 53335.) The City may (but is not required to) mail notice to all voters. (Gov. Code, § 53322.4.)
August 9, 2016* Special Mtg	City Council holds a public hearing on the proposed tax extension. Assuming less than a majority of eligible voters protest the tax, the City Council may schedule an election to approve the tax extension. At this meeting, the City Council may place the tax extension on the ballot, direct the City Attorney to prepare an impartial analysis and authorize one or more Councilmembers to prepare ballot arguments.
August 12, 2016	Deadline to place the tax extension measure on the ballot. This is only an issue if the City Council continues its discussion of the measure to a future meeting after August 9 th .
August 17, 2016	Deadline to modify or remove the tax extension measure from the ballot.
August 19, 2016**	Deadline for impartial analysis to be submitted to the County.
August 24, 2016**	Deadline for initial arguments to be submitted to the County.
August 29, 2016**	Deadline for rebuttal arguments to be submitted to the County.
November 8, 2016	Election day. Measure must receive 2/3 voter approval to pass.

* This is not the last possible date. We move this around as necessary up to August 12th.

** County will set exact deadlines. These are estimates.

February 14 – 39th Annual **Camellia Tea**, Clayton Historical Society, 6101 Main Street, 1pm to 4pm. Coffee, tea, and treats

A great opportunity to tour the Museum decorated in the season's bloom of camellias. For more information call Mary Spryer 672-7232 or www.claytonhistory.org.

February 28 – 16th Annual **Chili Cook Off** – Clayton Club Saloon, 6096 Main Street, 10am – 4pm; judging noon-1pm. Prizes- awards for top three of 20 entries. Entry forms at Clayton Club. For info www.claytonclubsaloon.com; email at steve@claytonclubsaloon.com; (925) 998-0549.

March 12th – **Library 21st Birthday Recognition Program** – Annual Library Birthday recognition, Foundation meeting and volunteer recognition Clayton Library Hoyer Hall 10 am to 11 am. For more info contact Joyce Atkinson at 672-3850.

April 1, 2 and 3 -- **Annual Clayton Library Birthday Celebration and Creekside Arts Celebration**

Friday 6pm-8:30pm; Saturday 10am- 6pm; Sunday Noon-5pm – Clayton Community Library 6125 Clayton Road; for info call Ariene Nielson 673-9777 or email at akiksen@aol.com

April 1 through 31 – **April on the Mountain** – various hikes and nature activities within Mt. Diablo State Park and nearby regional park areas. For information call 673-2891 or 972-7222.

April 8th – 10th ; 14th -17th ; 21st -23rd - Clayton Theatre Company presents Rumors a classic Broadway comedy stage play by Neil Simon at Endeavor Hall 6008 Center Street, Clayton CA 94517 www.BrownPaperTickets.com For more information or Roxanne Pardi at 698-1886 tickets available www.claytontheatrecompany.com

April 15, 16, 17 – **Spring Book Sale**. The Semi Annual Library Foundation pre owned Book Sale @ Clayton Library – Hoyer Hall Community Room, 6125 Clayton Rd. Fri. 4-7 CCLF members only- memberships can be purchased at the door; general public--Sat. 10-6; Sun. Noon-4; information call 672-3672 www.claytonlibrary.org

April 23 and 24 (tentative) – **Annual Gardens Tour** 10am – 4pm Rain or Shine various homes in the Clayton Valley area, Information - call Clayton Historical Society at (925) 672-0240 or www.claytonhistory.org

April 23 – Spring **Clayton Cleans Up** - Rain or shine, 9 am to Noon. Meet at City Hall Courtyard, 6000 Heritage Trail, for Information - call Pamela at Clayton Pioneer at 672-0500 or email: pamela@claytonpioneer.com.

April 27 – **Annual Spaghetti Feed** – 5pm – 8pm at Endeavor Hall, 6008 Center Street, Downtown Clayton, AAUW American Association of University Women for information contact Joan Chesterman at 672-7815 or email: JChesterman@astound.net

April 30 – 21st Annual **Devil Mountain Double Century Bicycle Ride**- starts and ends in San Ramon-- Pine Hollow Rd, Mt Zion to Clayton Rd, continue as it becomes Marsh Creek Rd, 7:30am- 9:30am for info contact Scott Halversen (510)-882-6727, email: syh_cpa@pacbell.net or www.quackcyclists.com

April 30th and May 1st -- Annual **Art and Wine Festival** **Sat: 10am – 7:00 p.m.; Sun: 10am – 5pm**, Main Street downtown Clayton. Art, Crafts, Food, Music, Kiddieland. Information - Call CBCA at 672-2272; or www.claytoncbca.org

May 7 – **Annual Plant Sale**, Clayton Valley Garden Club, Rain or shine. Endeavor Hall Parking Lot 8 am-1pm. Call Rory Richmond at (925) 864-8687 for information; email: rrichmond509@comcast.net or www.claytonvalleygardenclub.org

May 7 -- Sat Night **Concerts in the Grove** kick off 6pm – 8:30pm – Grove Park Gazebo Downtown Clayton --Main Street– “**Band TBA**” music style of band goes here . www.websiteofbandgoeshere for more info.

May TBD possibly 7 or 14 – **Clayton Valley Charter High School – Bands/Music March – A – Thon**. 9am to noon- Downtown, to Library, Easley Drive, Stranahan Circle and Grove Park. For info contact Venus Suasin at vsuasin@comcast.net

May 7 or 14 through September 27 – **Clayton Farmers Market** Saturday's 8am-Noon – Downtown Clayton on Diablo Street (between Main and Center Streets). For more information contact Pacific Coast Farmers Market at www.pcfma.com or call 1-800-949-3276 (no market on September 3).

May 21 -- Sat Night **Concerts in the Grove** — 6pm – 8:30 pm Grove Park Gazebo Downtown Clayton --Main Street - “**Band TBA**” music style of band goes here . www.websiteofbandgoeshere for more info.

May 30 – **Annual Memorial Day Program** by the VFW Post 1525, 10am Downtown Clayton Flagpole, Main and Oak Streets. Information call Paul Carroll at 628-9508 or paulgcarroll@sbcglobal.net.

June 4 – Sat Night Concerts in the Grove – 6pm – 8:30 pm Grove Park Gazebo Downtown Clayton --Main Street the “**Band TBA**” music style of band goes here . [www.website of band goes here](#) for more info.

June 6 -- Annual Clayton Business and Community Association 30th Annual **Golf Tournament**, - Oakhurst Golf Course; noon shotgun start, dinner afterwards. Contact CBCA at 672-2272 or [www.claytoncbca.org](#)

June 8 or 9 – tentative Wed or Thurs. Night **Grove Concert** – 7pm - 8:30 pm pm Grove Park Gazebo Downtown Clayton --Main Street - **name of band here** . [www.website here.com](#)

June 18 – Sat Night Concerts in the Grove -- 6pm – 8:30 pm Grove Park Gazebo Downtown Clayton --Main Street “**Band TBA**” music style of band goes here . [www.website of band goes here](#) for more info.

June 22 or 23 – tentative Wed or Thurs. Night **Grove Concert** – 7pm - 8:30 pm pm Grove Park Gazebo Downtown Clayton --Main Street - **name of band here** . [www.website here.com](#)

July 2 – Sat. Night Concerts in the Grove – 6pm – 8:30 pm Grove Park Gazebo Downtown Clayton - Main Street “**Band TBA**” music style of band goes here . [www.website of band goes here](#) for more info.

July TBD - Clayton Youth Theatre Camp presents scenes from: “_____” at Endeavor Hall 6008 Center Street, show times at 1:00 pm & 3:00 pm. - for more information [www.claytontheatrecompany.com](#) or Roxanne Pardi at 698-1886

July 4 – Annual Pancake Breakfast & Parade– Downtown Clayton, Pancakes at Endeavor Hall(6008 Center Street) at 7am Clayton Valley Sunrise Rotary, \$5 adults and \$3 kids 12 and under; parade on Main Street 10 am, for info: Sandy Johnson at 693-0463 or main parade application at [www.cityofclayton.org](#) (no parade application needed for kiddie parade – just line up on Oak street near between Main and Center Street that morning)

July 1 tentative - Friday Night Family Movies – “movie TBD outdoor movies and social in the parking lot next to the Clayton Community Church offices, 8pm-10pm, 6055 Main Street downtown Clayton, for information call 673-9060. [www.claytoncc.com](#)

July 6 or 7 – tentative Wed or Thurs. Night **Concert in the Grove** – 7pm - 8:30 pm pm Grove Park Gazebo Downtown Clayton --Main Street “**Band TBD**” type of music here . [www.band web site here.com](#) for more info.

July 8 - Friday Night Family Movies – “Movie TBD” outdoor movies and social in the parking lot next to the Clayton Community Church offices, 8pm-10pm, 6055 Main Street downtown Clayton, for information call 673-9060 [www.claytoncc.com](#)

July 16 – Sat Night Concerts in the Grove - 6pm to 8:30 pm Grove Park Gazebo Downtown Clayton --Main Street – “**Band TBD**” type of music here . [www.band web site here.com](#) for more info.

July 15 - Friday Night Family Movies – “movie TBD” outdoor movies and social in the parking lot next to the Clayton Community Church offices, 8pm-10pm, 6055 Main Street downtown Clayton, for information call 673-9060. [www.claytoncc.com](#)

July 20 or 21 – tentative Wed or Thurs. Night **Concert in the Grove** – 7pm - 8:30 pm pm Grove Park Gazebo Downtown Clayton --Main Street “**Band TBD**” type of music here . [www.band web site here.com](#) for more info.

July 22 - Friday Night Family Movies – “movie TBD” outdoor movies and social in the parking lot next to the Clayton Community Church offices, 8pm-10pm, 6055 Main Street downtown Clayton, for information call 673-9060. [www.claytoncc.com](#)

July 29 - Friday Night Family Movies – “movie TBD” outdoor movies and social in the parking lot next to the Clayton Community Church offices, 8pm-10pm, 6055 Main Street downtown Clayton, for information call 673-9060. [www.claytoncc.com](#)

July 30 – Sat. Night Concert in the Grove – 6pm - 8:30 pm pm Grove Park Gazebo Downtown Clayton --Main Street “**Band TBD**”, type of music here. [www.band web site here.com](#) for more info.

August 13 – Sat Night Concerts in the Grove -- 6pm – 8:30 pm Grove Park Gazebo Downtown Clayton--Main Street – “**Band TBD**” type of music here . [www.band web site here.com](#) for more info.

August 3 or 4 tentative– Wed or Thurs Night **Grove Concert** -- 7:00 pm – 8:30 pm Grove Park Gazebo Downtown Clayton--Main Street **Band TBD**” type of music here . [www.band web site here.com](#) for more info

August 6 - Seventh Annual Rib Cook-Off 10 am – 6pm; CBCA Annual Rib Cook Off downtown Clayton Main Street – for more info contact Rory Richmond at [rrichmond509@comcast.net](#) or [www.claytoncbca.org](#)

August 20 (tentative) – Relay For Life – American Cancer Society – location to be determined, contact Lindsay.Davis@cancer.org or at (925) 788-0064 or relayforlife.org/California.

August 27 – Sat. Night **Concerts in the Grove** 6pm to 8:30 pm Grove Park Gazebo Downtown Clayton --Main Street “Band TBD” type of music here . [www.band web site here.com](http://www.bandweb.site/here.com) for more info.

August 17 or 18 tentative – Wed or Thurs Night **Grove Concert** – 6:30-8:30 pm Grove Park Gazebo Downtown Clayton --Main Street “Band TBD” type of music here . [www.band web site here.com](http://www.bandweb.site/here.com) for more info

September 3 – Eleventh Annual **Soap Box Derby and Classic Car Show** 9 am – 3 pm, Main Street Downtown Clayton. For information call Clayton Community Church (925) 673-9060.

September 11 (tentative) – 9/11 Remembrance (15 years) 7pm at Station 11 Firehouse lawn – corner of Center and Clayton Rd. bell ringing memorial commemoration

September 10 – **Concerts in the Grove** — last concert of the summer 6pm – 8:30 pm Grove Park Gazebo Downtown Clayton -- Main Street – “Band TBD” type of music here . [www.band web site here.com](http://www.bandweb.site/here.com) for more info.

September/October Wednesday TBD — Clayton Valley Charter High School **Homecoming Parade** —4-6pm, Main Street, call Ms. Ljepava, 682-7474 for information.

Sept 30, Oct. 1 & 2 – Oktoberfest kids Carnival – Main/Oak St. CC Church offices parking lot & field Friday Sept 30th 5pm-10pm
Sat Oct 1, 11am-10pm; Sunday Oct 2, 11 am to 9 pm Information - Call CBCA at 672-2272; or www.claytonoktoberfest.com

October 1st & 2nd – Oktoberfest Sat: 11am - 8pm; Sun: 10 - 6pm; Main Street Downtown Clayton. Art, Crafts, Food and kids Carnival rides. Information - Call CBCA at 672-2272; or www.claytonoktoberfest.com

Oct. tentative – Clayton Theatre Company presents You're a Good Man Charlie Brown, a musical comedy based on the characters created by Charles Shultz in his Peanuts comic strip at Endeavor Hall 6008 Center Street, Clayton CA 94517– tickets at www.BrownPaperTickets.com For more information Roxanne Pardi at 698-1886 or www.claytontheatrecompany.com.

October 14, 15, 16 – Fall Book Sale. Semi Annual Library Foundation pre owned Book Sale @ Clayton Library- Hoyer Hall Community Room, 6125 Clayton Rd. (Fri. 4-7 CCLF members only- memberships can be purchased at the door; general public --Sat. 10-6; Sun. Noon-4) information call 672-3672. www.claytonlibrary.org

December 3 -- Annual Caroling and Tree Lighting. Rain or Shine --Downtown Clayton, Grove Park to Main and Oak Streets,- Carriage Rides 4:30-6:30; Caroling 6pm; Tree Lighting 6:30 pm . Information Call CBCA at 672-2272.

December TBD – Annual **Hospice Tree Lighting** @ Concord John Muir Hospital Parking Lot, Almond /East Street 5:30 pm., for info contact at 925-887-5678 or at [www.hospiceeast bay.org](http://www.hospiceeastbay.org)

December 10 -- Annual Christmas Tea with Mrs. Claus and Santa 11 am – 2 pm, Endeavor Hall, 6008 Center Street - Call CBCA at 672-2272.

December 10 (tentative) – Annual Holiday Toy Collection Clayton Valley Charter High School Lacrosse Team – new toy donations being accepted 10 am to 2pm, at the Grove Park Gazebo, downtown Clayton – for info contact Tracy Morse, CVHS Men's Lacrosse Team Rep, Tel: 925-207-0382; email: traceylmorse@gmail.com more info at www.cvlacrosse.com.

December 11 (tentative) – Annual Holiday Home Tour Noon - 7pm Various homes in the Clayton Valley area, Information – call Clayton Historical Society at (925) 672-0240 or www.claytonhistory.org.

SUMMARY REPT-GROUP DETAIL

CONTRA COSTA COUNTY
SPECIAL ELECTION
JUNE 5, 2007

Official Results

RUN DATE:06/11/07 01:23 PM

REPORT-EL45A PAGE 001

	TOTAL VOTES	%	Election Day	Absentee
PRECINCTS COUNTED (OF 18)	18	100.00		
REGISTERED VOTERS - TOTAL	34,604			
BALLOTS CAST - TOTAL	15,577		4,127	11,450
VOTER TURNOUT - TOTAL		45.02		

Measure B CITY OF CLAYTON

Vote for One 1

(WITH 4 OF 4 PRECINCTS COUNTED)

Yes/Si	2,445	82.94	865	1,580
No/No.	503	17.06	128	375

Measure C CITY OF LAFAYETTE

Vote for One 1

(WITH 9 OF 9 PRECINCTS COUNTED)

Yes/Si	3,641	63.51	1,078	2,563
No/No.	2,092	36.49	528	1,564

Measure D CITY OF LAFAYETTE

Vote for One 1

(WITH 9 OF 9 PRECINCTS COUNTED)

Yes/Si	3,980	71.40	1,136	2,844
No/No.	1,594	28.60	429	1,165

Measure E CITY OF ORINDA

Vote for One 1

(WITH 5 OF 5 PRECINCTS COUNTED)

Yes/Si	4,346	63.57	917	3,429
No/No.	2,491	36.43	601	1,890

Tuesday, June 5, 2007 / Martes, 5 de Junio, 2007

A Special Election B Elección Especial C

INSTRUCTIONS TO VOTERS

To vote, BLACKEN the oval (●) to the LEFT of the word "Yes" or the word "No".

INSTRUCCIONES A LOS VOTANTES

Para votar RELLENE el óvalo (●) que aparece a la IZQUIERDA de la palabra "Si" o de la palabra "No".

**MEASURE SUBMITTED TO THE VOTERS
MEDIDA SOMETIDA A LOS VOTANTES**

**CITY OF CLAYTON
CIUDAD DE CLAYTON**

B

Shall a new Community Facilities District 2007-1 (Citywide Landscape Maintenance District) be funded to replace the expiring District for a period of ten years to operate and maintain public roadway landscaping, trails system, open space weed abatement and related costs, with an annual levy of a special tax in the initial amount of \$196.77 per residential parcel and per non-residential acre or fraction thereof, and with an initial yearly appropriations limit of \$850,550?

¿Deberá financiarse un nuevo Distrito de Instalaciones Comunitarias 2007-1 (Distrito de Mantenimiento del Paisaje de la Ciudad) para reemplazar al Distrito que está por caducar, por un período de diez años para operar y mantener los paisajes de las calzadas públicas, el sistema de senderos, la erradicación de malezas en los espacios abiertos y los costos relacionados, con la aplicación anual de un impuesto especial en un monto inicial de \$196.77 por parcela residencial y por acre no residencial o fracción de la misma, y con un límite de apropiaciones anual inicial de \$850,550?

Yes/Si

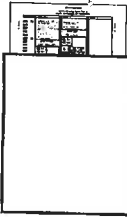
No/No

**END OF BALLOT
FINAL DE LA BALOTA**

Instructions to voter

STEP 1

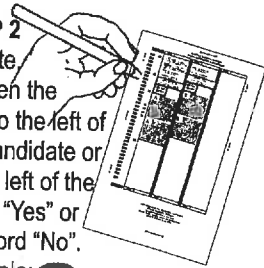
Go to the voting booth, remove the ballot card(s) from secrecy folder.



STEP 2

To vote blacken the oval to the left of the candidate or to the left of the word "Yes" or the word "No".

Example: ●

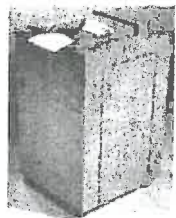


STEP 3

To cast a write-in vote for a candidate not appearing on the ballot, locate the write-in space below the names of the other candidates for that office. Blacken the oval using a black pen. Write the name in the space provided.

STEP 4

Retain your ballot stub as your record of having voted. Insert your ballot into the ballot scanner. If there are any errors the scanner will beep and display a message. A machine official will be available near the scanner for assistance if needed.



Note: If you make a mistake, return all ballot cards and stubs to precinct officer to receive a replacement ballot.

Instrucciones a los

VOTER INFORMATION PAMPHLET

Containing

MEASURE B

CITY OF CLAYTON

TUESDAY, JUNE 5, 2007

Arguments in favor of or against the proposed measure are the opinions of the authors.



If you would like to receive this information in Spanish please call (925) 646-4166; if you have already requested voting information in Spanish, the information will be mailed to you automatically.

Si desea recibir esta información en español, por favor llame al (925) 646-4166, si ya solicitó información para votar en español, ésta será enviada automáticamente por correo.

**SPECIAL TAX MEASURE B
CITY OF CLAYTON**

Shall a new Community Facilities District 2007-1 (Citywide Landscape Maintenance District) be funded to replace the expiring District for a period of ten years to operate and maintain public roadway landscaping, trails system, open space weed abatement and related costs, with an annual levy of a special tax in the initial amount of \$196.77 per residential parcel and per non-residential acre or fraction thereof, and with an initial yearly appropriations limit of \$850,550?

**CITY ATTORNEY'S IMPARTIAL ANALYSIS OF
SPECIAL TAX MEASURE B**

Following an advertised public hearing on February 20, 2007, the City Council adopted Resolution No. 06-2007 establishing the City of Clayton Community Facilities District 2007-1 (Citywide Landscape Maintenance), (herein "CFD"), the boundaries of which encompass the entire City of Clayton. The purpose of the CFD is to pay for the costs of maintaining public roadway landscaping, open space and trails, and for operating and maintaining the Clayton Fountain. The public services proposed to be provided by the CFD are itemized in Exhibit "A" to the Resolution.

In order to pay for these costs and related expenses a special tax is proposed to be levied annually in the following amounts:

- A. Residential Parcels: \$ 196.77 per parcel.
- B. Non-residential Parcels: \$ 196.77 per acre or fraction thereof.

Further details regarding the above tax rates are set forth in Exhibit "B" to Resolution 06-2007.

Each special tax rate may be increased annually by the City Council in an amount not to exceed the most recent full annual adjustment (April to April of the Consumer Price Index-All Urban Consumers (CPI), San Francisco-Oakland-San Jose, California area, base period 1982-84 equals 100). The determination to apply any CPI adjustment is not automatic and must be made by the City Council at a regular public meeting thereof accompanied by a prior recommendation of the citizens' Trails and Landscaping Committee. The annual increase may not exceed 3% over the previous year's rate and the possibility of any rate increase can not be considered until Fiscal Year 2008-2009.

The special tax will be levied annually for a period of 10 years commencing with Fiscal Year 2007-2008 to and including Fiscal Year 2016-2017, and then will expire.

The new CFD replaces Clayton Community Facilities District 1997-1 which levied an annual special tax for citywide landscape maintenance purposes the past 10 fiscal years and which tax automatically ends on June 30, 2007. No further special tax can be levied by CFD 1997-1.

Resolution No.07-2007 was adopted by the City Council on February 20, 2007 proposing an annual appropriations limit of \$850,550.00 (first year budget). The Resolution also called for a special election to be held on June 5, 2007 for voters to determine whether the special tax shall be levied, and if the appropriations limit for the District (first year budget) shall be as stated above.

Passage of the special tax requires a favorable vote of two-thirds of the votes cast on the measure.

Copies of all relevant reports, a boundary map of the CFD (recorded in Book 81 of Maps of Assessment and Community Facilities Districts at page 15, Contra Costa County Recorder's Office), and Council resolutions concerning the formation of the CFD are available for review in the office of the City Clerk (925-673-7300).

This impartial analysis of the measure was prepared as required by California Government Code Section 53327 and Elections Code Section 9280.

Dated: March 9, 2007

J. Daniel Adams
Clayton City Attorney

**ARGUMENT IN FAVOR OF
SPECIAL TAX MEASURE B**

In 1997, Clayton residents voted to consolidate multiple landscape districts thereby insuring a secure funding source for maintaining our community's front yard – namely our trails, landscaping and open space. That district automatically expires this June and needs to be replaced to once again provide reliable funds to preserve and enhance a key feature of Clayton's distinctive character.

**FULL TEXT OF
SPECIAL TAX MEASURE B**

**EXHIBIT A
CITY OF CLAYTON
Community Facilities District 2007-1
(Citywide Landscape Maintenance)**

DESCRIPTION OF SERVICES TO BE FINANCED BY THE CFD

The Services to be financed by the special taxes of the City of Clayton Community Facilities District 2007-1 (Citywide Landscape Maintenance) (the "CFD") shall include the Maintenance of:

- A. Public Roadway Landscaping – which includes but is not limited to the following improved rights-of-way:

Atchinson Stage Road – from Pine Hollow Road to Caulfield Drive
Black Point Place – center median island.
Caulfield Court – center median island.
Center Street – from Oak Street to Clayton Road.
Clayton Road – from the western city limits to the southern Marsh Creek Road intersection.
Cul-de-sacs: landscaped areas at end of Ahwanee Lane, Wawona Court, Tuyshtak Court, Antelope Court, Obsidian Court, Blue Oak Lane, Falcon Place, Windmill Canyon Place, Hummingbird Place, Raven Place, and Golden Eagle Place.
Diablo Parkway – from Marsh Creek Road to El Portal Drive.
Eagle Peak Avenue – from the east intersection with Oakhurst Drive to just west of the Ohlone Heights intersection, and including the west intersection with Oakhurst Drive.
Indianhead Way – entrance area at Oakhurst Drive
Indian Wells Way – both entrance areas with Oakhurst Drive, and center medians up to Anizume Court and Jalalon Place.
Jeffry Ranch Court – center median island.
Keller Ridge Drive – to Golden Eagle Place intersection.
Lydia Lane – from intersection of Clayton Road to Lydia Lane Park.
Main Street – from Clayton Road to (old) Marsh Creek Road.
Marsh Creek Road – from the northern intersection of (old) Marsh Creek Road to the eastern city limits.
Oakhurst Drive – from the western city limits to Clayton Road intersection.
Peacock Creek Drive – from Clayton Road to approximately the Pebble Beach Drive intersection.
Pine Hollow Road – from Atchinson Stage Road to Panadero Way.

Three years ago, a group of your neighbors volunteered to serve on a committee to analyze the district's successes and shortfalls. Their goal was to recommend to our community a new district that will replace the one now expiring and establish priorities and proper levels of landscape care. Measure B is the result of their efforts.

With your passage of Measure B, this group will continue to serve as the ongoing district oversight committee advising the City Council and staff concerning its annual budget and providing a public forum for citizen concerns. The committee will further recommend priorities to address current resource deficiencies and monitor these critical landscape services that have always been funded through a special district tax.

We strongly believe keeping and improving the appearance and condition of our trails, roadway landscaping, open space services and annual weed abatement are essential actions that help shape Clayton's identity and preserve our property values.

We deserve community scenery we can be proud of. We deserve the increased safety and peace of mind that an adequately funded landscape maintenance district will provide.

Please vote "yes" on Measure B.

Daniel Richardson, Chairman, Yes for Clayton Landscape Maintenance

Gerard Michael (Mike) Fossan, President of Clayton Business & Community Assoc.

Robert W. Hoyer, Clayton's First Mayor

Jo Ann G. Caspar, Member of Landscaping & Trails Committee

Ed Moresi, Clayton Business Owner

**ARGUMENT AGAINST
SPECIAL TAX MEASURE B**

None filed.

Reg / Drive – median entrance from Marsh Creek Road.
So. Mitchell Canyon Road – from approx. Del Trigo Lane to
Herriman Court intersection.

B. Open Space and Trails – which include but are not limited to:

Publicly-owned creek-side, intra-community and open space trails located within the boundaries of the CFD.

C. Clayton Fountain – which includes but is not limited to:

Maintenance to the fountain itself, rock structure and all attendant appurtenances, including the geyser and water pump system as well as the surrounding public landscaped area located at east side of the intersection of Oakhurst Drive, Center Street and Clayton Road.

Definitions

“Maintenance” means the furnishing of services and materials for the ordinary and usual operation, maintenance and care of the public landscaping and appurtenant facilities, including repair, removal or replacement of all or part of any landscaping and appurtenant facilities providing for the life, growth, health and beauty of the landscaping, including cultivation, irrigation, trimming, spraying, fertilizing and treating for disease or injury; the removal of trimmings, rubbish, debris and other solid wastes; and the eradication of landscape pests, including but not limited to vermin and rodents, ground squirrels, gophers, moles and wild pigs. “Maintenance” also includes the furnishing of water for irrigation of the public landscaping, and the supply of electricity to operate the attendant irrigation systems.

The foregoing services shall be provided through and by the City of Clayton, either with its own labor forces or by contract with third parties, or any combination thereof, as determined solely by the City of Clayton.

“Costs” means the costs and expenses directly or indirectly incurred by the City in connection with the Maintenance described above. Allowable Costs payable from special taxes of the District also include the County’s imposed cost to levy and collect the District’s assessment through the annual property tax bill, the City’s shared equipment and facilities charges, City prorated overhead charges to administer and manage the District and collect the special taxes, and District reserve funds for replacement and major repairs.

EXHIBIT B
CITY OF CLAYTON
Community Facilities District 2007-1
(Citywide Landscape Maintenance)

RATE AND METHOD OF LEVY OF SPECIAL TAX

A special tax will be levied annually on each taxable parcel of land not defined below as an “Exempt Parcel” within the Community Facilities District 2007-1 (Citywide Landscape Maintenance) (the “CFD”) and collected in the same manner as ordinary ad-valorem property taxes or in such manner as the City of Clayton City Council or its designee shall determine, including City-originated billing of the affected property owners.

Definitions

Taxable Parcels:

Parcels of land within the boundaries of the CFD that are not included in the “Exempt Parcel” category listed below.

Exempt Parcels:

Parcels of land owned by a public agency, right-of-way parcels, schools, hospitals, cemeteries, mortuaries, libraries, parks, mineral rights, private roads, pipelines, public parking facilities and common areas.

Residential Parcels:

Taxable parcels of land that are classified as either single-family, condominium, townhouse, multi-family or rural residential parcels.

Non-residential Parcels:

Taxable parcels that are not classified as “Residential Parcels”.

Special Tax:

The special tax allowed to be levied on property within the CFD, calculated pursuant to this Rate and Method of Apportionment of Special Tax.

Special Tax Formula

A. Residential Parcels:

An annual special tax will be levied on all Residential Parcels, as defined above, at the per parcel tax rate shown below for each fiscal year 2007-2008 through 2016-2017:

idential Parcel Annual Special Tax
Rate: \$196.77

B. Non-residential Parcels: An annual special tax will be levied on all Non-residential Parcels at the per acre rate shown below for each fiscal year 2007-2008 through 2016-2017:

Non-residential Parcel Annual Special Tax Rate: \$196.77 per acre or fraction thereof, based on parcel size as shown on the then-current County tax roll.

Duration of Special Tax Levy

The special tax will be levied annually for a period of ten (10) years commencing in fiscal year 2007-2008 through and including fiscal year 2016-2017. After the ten (10) year duration has expired the special tax may no longer be collected unless extended pursuant to applicable laws, except that a special tax that was lawfully levied in or before the final tax year and that remains delinquent may be collected in subsequent years.

Special Tax Escalator Factor

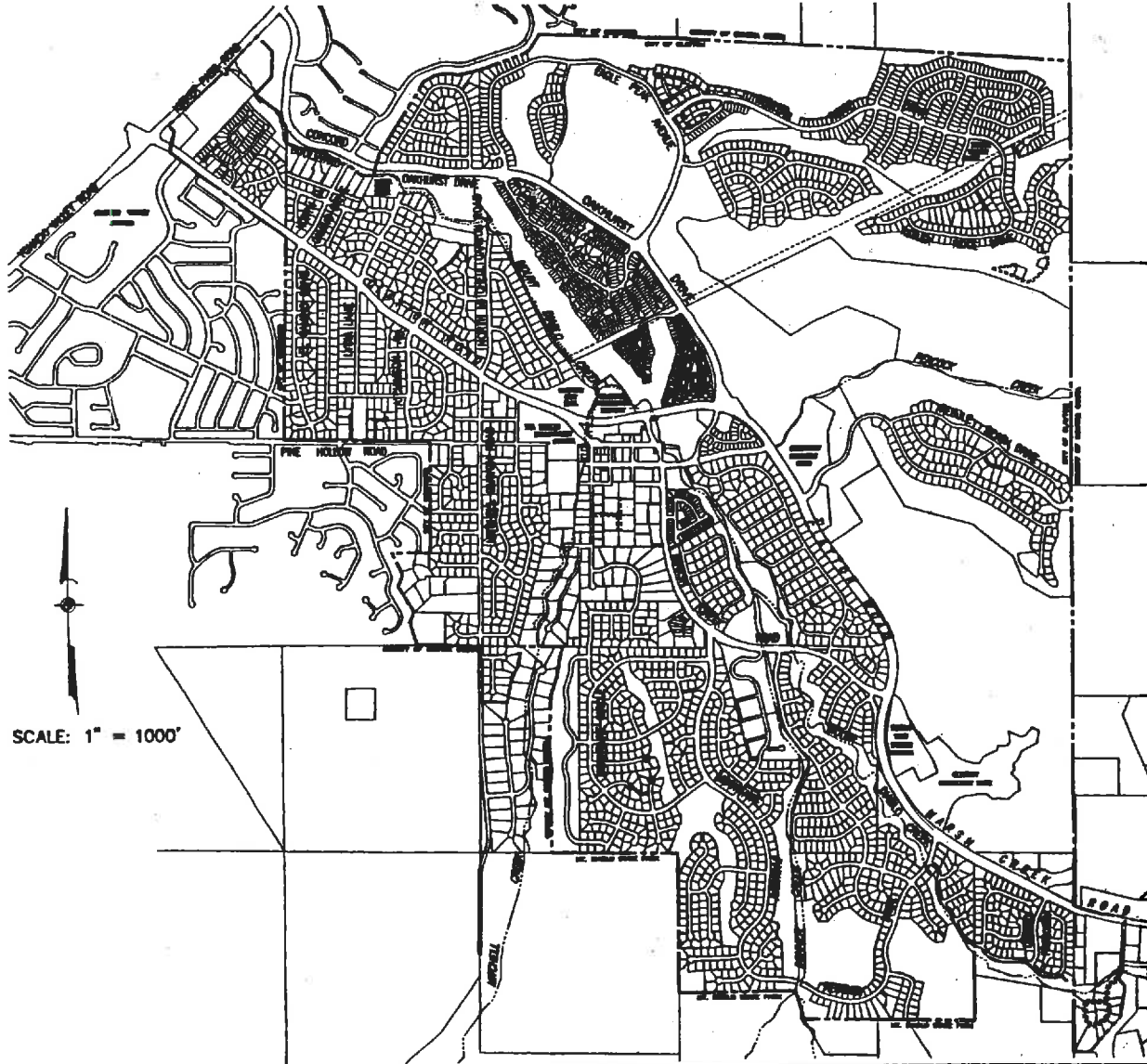
In fiscal years 2008-2009 through 2016-2017, the special tax may be increased annually by the Clayton City Council in an amount not to exceed the full annual adjustment (April to April) in the Consumer Price Index – All Urban Consumers, San Francisco-Oakland-San Jose, CA Area (Base Period 1982-84 = 100). This escalator factor is applicable if determined to be necessary due to expected increases in the operational and maintenance expenses attributable to the CFD. Such determination shall be made by action of the Clayton City Council, which must occur at a regular public meeting thereof accompanied by a prior recommendation of the citizens' Trails and Landscaping Committee established by the City Council in February 2006 (City Resolution No. 08-2006). In no event shall each annual special tax rate in any fiscal year increase by more than three percent (3%) over the previous year.

Relationship to Special Tax of Community Facilities District 1997-1

An intent of the new Community Facilities District 2007-1 is to replace the City's Community Facilities District 1997-1 that levied an annual special tax for Citywide Landscape Maintenance purposes during the last ten years and which special tax automatically expires on June 30, 2007. No further special tax can be levied by CFD 1997-1.

PROPOSED BOUNDARIES OF
COMMUNITY FACILITIES DISTRICT NO. 2007-1
(CITYWIDE LANDSCAPE MAINTENANCE DISTRICT)

CITY OF CLAYTON, COUNTY OF CONTRA COSTA
 STATE OF CALIFORNIA



SCALE: 1" = 1000'

CITY RECORDER'S STATEMENT:

FILED IN THE OFFICE OF THE CITY CLERK OF THE CITY OF CLAYTON, THIS 4th DAY OF January, 2007.

BY: *Laci Jackson*
 CITY CLERK
 CITY OF CLAYTON

CITY CLERK'S STATEMENT:

I HEREBY CERTIFY THAT THE WITHIN MAP SHOWING THE PROPOSED BOUNDARIES OF COMMUNITY FACILITIES DISTRICT NUMBER 2007-1 IN THE CITY OF CLAYTON, COUNTY OF CONTRA COSTA, STATE OF CALIFORNIA, WAS APPROVED BY THE CITY COUNCIL OF THE CITY OF CLAYTON AT A REGULAR MEETING THEREOF, HELD ON THE 16th DAY OF January, 2007, BY ITS RESOLUTION NO. 04-2007

BY: *Laci Jackson*
 CITY CLERK
 CITY OF CLAYTON

RECORDER'S CERTIFICATE:

FILED THIS 23rd DAY OF January, 2007, AT THE HOUR OF 2:07 O'CLOCK P.M. IN BOOK 87 OF MAPS OF ASSESSMENT AND COMMUNITY FACILITIES DISTRICTS, AT PAGE 15, AND AS INSTRUMENT NUMBER 07-3204 IN THE OFFICE OF THE COUNTY RECORDER OF CONTRA COSTA COUNTY, STATE OF CALIFORNIA.

BY: *Stephen L. Weir*
 COUNTY RECORDER
 COUNTY OF CONTRA COSTA

BY: *Orlando*
 DEPUTY COUNTY RECORDER

LEGEND

----- CITY LIMIT LINE AND
 COMMUNITY FACILITY DISTRICT BOUNDARY

1-23-07 2:04 PM

81-15

2007 JAN 23 2:04 PM 81-15 07-3204 15 87 P. 2 (07-3204) LANDSCAPE DISTRICT-2007-01 4-1075 COMM-FAC-DISTRICT

Agenda Date: Jan. 11, 2016

Agenda Item: 5a

City of Clayton



Trails and Landscape Committee

**Annual Report
2014–2015**

Message from the Chair:

The Trails and Landscape Committee has decreased by three for fiscal year 2014 – 2015. We currently have a nine member committee. The committee welcomed back two reappointed members Clayton Smith and Bob Steiner. Thanks to Clayton Smith for taking on the role of Vice Chair! I would also like to thank Ryan Lowe and Don Fitzgerald for their contributions while serving on the TLC committee and wish them well. I'm pleased to announce Christopher Garcia as a new addition to the TLC this year! The current members have provided meaningful contributions to the TLC. I'm looking forward to working with the current committee members along with Laura Hoffmeister and Mark Janney to ensure that we all execute on our commitments to the TLC going forward!

TLC reviewed the special tax funding measure which is the only source of funding for the Landscape Maintenance District, as it expires in 2017. We reviewed the methodology rate and term and plan to keep it the same for another 10 years. The consensus was to extend the current tax on the June 2016 election. Pending the outcome, there will be a second opportunity to get it passed in November 2016.

While several maintenance initiatives were addressed by the end of fiscal year 2014/2015, we were not able to undertake any landscape projects due to the lingering drought conditions; however, this was the second year of extra tree trimming – lifting tree canopy – in targeted vegetated areas of Oakhurst to reduce fuel load of open space. Reviewed modified irrigation watering and irrigation water conservation policy to comply with most current drought water reductions (45% decrease watering in the landscape district from 2013 and city had already reduced its watering from prior baseline created in 2008.

The TLC did recommended new capital project (which city council approved) and allocated \$300,000 toward various entryway landscape areas which will be redesigned with more hardscape and hardier drought tolerant plantings. Plans will be prepared and reviewed by the TLC and ultimately the city council. The plans will be ready so that when drought restrictions are modified and re-landscaping can commence city is ready with plans. The concept plans will be prepared in house by maintenance supervisor John Johnston who also designed the successful Water Feature re-landscaping and Clayton Road median re-landscaping. Both of these prior redesigns incorporated hardscape and hardy drought tolerant plants that also have variety of color. Recommended and City Council approved including the Lower Easley trail to be resurfaced along with the street repaving project to provide economies of scale as was done a few years back with other trail repaving project.

The following Annual Report is for the 2014 – 2015 fiscal year. This report contains a detailed account of the expenditures of revenues collected by Measure B. All revenue collected by this measure is used on the Landscape maintenance District (LMD). Measure B required the formation of a Citizen Oversight Board to assure that Measure B funds are being utilized for their intended purpose. The Citizen Oversight Committee is made up of citizens of Clayton that are appointed by the City Council to serve two year terms. The committee will advise the council on LMD projects and maintenance reports review & submit recommendations on future budgets and present an annual report for use by the Council and the citizens of Clayton.

Adopt-A-Trail program will continue in FY 2015-2016. New TLC member Christopher Garcia enthusiastically volunteered to coordinate. This program is designed to attract sponsors (families, individuals or businesses) who either make an annual financial pledge and/or a commitment to supply a work group to augment the efforts of the maintenance staff with regard to trail maintenance on one of eleven (11) trail segments. Posted at the head of each adopted trail is a plaque bearing the name of both the financial and the work-group sponsor. The bi-annual financial sponsorship is \$1,000, while work group sponsorship is \$200 per year.

Regards,
Larry Casagrande
Chair

LANDSCAPE MAINTENANCE DISTRICT CELEBRATES ITS EIGHTH YEAR:

The Citywide Landscape Maintenance District (“District”) ended its Eighth year of operation on June 30, 2015. It operates and maintains the public roadway landscaping and its irrigation system, the trail system, and the “Clayton fountain.” It also provides weed abatement and fire breaks in the open spaces. The District does not include any of the city parks/sports fields, the City Hall and Library Landscape , or the downtown Grove Park which are funded by other taxes.

Measure B, passed by voters in June 2007, established a Citizens’ Oversight Committee that is commonly known as the Trails and Landscaping Committee (“TLC”) which advises the City Council and staff on matters concerning the District budget, priorities, and responsibilities. The TLC consists of up to eleven 11 non-paid, volunteer citizens of Clayton and the Vice Mayor who serves as the City Council’s non-voting representative in an ex-officio liaison capacity. The TLC currently meets quarterly to oversee the operation of the District.

2014-2015 TLC MEMBERS:

Citizens and their respective terms who are currently serving as members of the TLC:

No Officio	(Ex-Officio)
No Alternate	(Ex-Officio-Alternate)
Larry Casagrande (Chair)	December 2014 - December 2016
Clayton Smith (Vice Chair)	December 2014 - December 2016
Christopher Garcia	December 2014 - December 2016
Howard Glazier	December 2013 - December 2015
Alyse Smith	December 2011 - December 2013
Robert Erich	December 2011-December 2013
Bob Steiner	June 2014 - December 2016
Anthony Chippero	June 2013 - December 2015
Harun Simbirdi	June 2013 - December 2015

COMMITTEE ROSTER
TRAILS AND LANDSCAPING COMMITTEE

Rev. 5/30/2015

Laura TL CRoster2011

Larry Casagrande (Chair)
239 Jeffry Ranch Place
Clayton, CA 94517
(925) 693-0073
email: Lcasagrande@chevron.com
(term: Dec. 2014 – December 2016)

Anthony Chippero
1713 Indian Wells Way
Clayton, CA 94517
(925) 234-6417 (business); (415) 839-8793
email: ajchippero@comcast.net
(term: June 2013 - December 2015)

Robert Erich
1044 Pebble Beach Drive
Clayton, CA 94517
(925) 946-0371 (wk); (925) 673-0544(alt/hm #)
email: erichlaw@me.com
(term: December 2013- December 2015)

Christopher Garcia
203 Mt. Wilson Place
Clayton, CA 94517
(925) 304-2144 (hm); (805) 748-4974 (wk)
email: Christopher@OutcastWines.com
chrislgarcia@hotmail.com
(term: December 2014- December 2016)

Howard Glazier
6021 Golden Eagle Way
Clayton, CA 94517
(925) 899-3314 (cell primary ph#)
Email: howardglazier44@comcast.net
(term: Dec. 2013- December 2015)

Harun Simbirdi
1353 El Camino Drive
Clayton, CA 94517
(925) 338-6075
email: simbirdi@yahoo.com
(term: June 2013 – December 2015)

Alyse Smith
601 Condor Place
Clayton, CA 94517
(c) (925)993-8583
email: alysej@comcast.net
(term: Dec. 2013- December 2015)

Clayton Smith
8 Long Creek Circle
Clayton, CA 94517
(925) 672-2529; (business): (925) 473-7792
email: clayton@alum.calberkeley.org or
csmith94517@comcast.net
(term: Dec. 2014 - December 2016)

Bob Steiner
4701 Morgan Territory Road
Clayton CA 94517
business: (925) 672-5854; (c) 925-787-1153
email: rws32@earthlink.com
(term: Dec. 2014 - December 2016)

TLC Recommendations, Projects, and Work Product Review 2014-2015

- √ TLC regularly receives and reviews reports on maintenance staff activities see attached City Maintenance Quarterly Report Update covering the periods: 6/9/14; 3/16/15 & 6/8/15. Some of the more significant issues in the reports include, but were not limited to:
 - Spot spray and pull weeds in the Landscape District Citywide on a continuing basis.
 - Continued our semi-annual trimming of the Landscape in several areas.
 - Removed one Sycamore tree hit by a car on Clayton road & trimmed two Eucalyptus trees that were encroaching on Redwood trees along Clayton Road by Peacock Creek Drive.
 - Completed the annual weed abatement for fire protection around homes bordering on open space City wide, adjacent to the roadway and certain trails.

- √ Re-enforced the committee's commitment to expanding the Adopt-A-Trail program.

- √ Reviewed Incoming and outgoing correspondence between citizens and staff regarding various concerns and observations relating to landscaping and trail issues.

- √ Reviewed and approved the proposed landscape district budget for FY 2014-2015.

- √ Once again, complimented the City Maintenance staff for the commendable job they do in effectively managing the available water supply and the maintaining the entire irrigation system.

ADOPT-A-TRAIL PROGRAM:

The Adopt-a-Trail program continues with TLC members working as volunteers to support the effort. The program aims to:

- Augment financing provided by Measure B
- Make the trails cleaner
- Celebrate the trails' sponsors and volunteers
- Foster civic pride through volunteerism, philanthropy, and cleanliness

The TLC has identified several trail segments for adopt. Each segment can have two adopters: a financial adopter and clean-up adopter.

Please see the APPENDIX section of this report for a current listing of adopters.

TLC RECOMMENDS BUDGET FOR FISCAL YEAR 2014-2015 TO CITY COUNCIL:

The TLC submitted a proposed budget to the City Council, which was based on the existing FY 2014/2015 assessment, subject to adjustment by the Consumer Price Index (CPI), but capped to a 3% maximum increase per Measure B. Subsequently, the CPI was published at an increase of 2.8% and in June 2015, the City Council adopted a total annual assessment of \$1,005,224 encompassing all residential parcels or non-residential parcel acre. *A copy of the adopted budget and further explanation of Fund 210 is included in the APPENDIX section of this report.*

COMMUNITY OUTREACH:

Both the TLC and the District continue to reach out to the public to keep citizens informed of their activities in a variety of ways, which include:

- Inviting the public to attend quarterly TLC meetings
- Requesting comments and questions via email to cityinfo@ci.clayton.ca.us
- Posting meeting minutes at the City website at www.ci.clayton.ca.us
- Presenting summaries of TLC meetings at City Council meetings
- Publishing quarterly reports of maintenance staff activities
- Submitting articles about the District to the Clayton Pioneer newspaper

APPENDIX

- 2014-2015 Budget
- City Wide Landscaping Maintenance District Fund No. 210
- City Maintenance Quarterly Report(s) - Trails and Landscaping
- Adopt a Trail Sponsors
- Trails and Landscape Committee Informational brochure
- Water Story- Clayton Pioneer 5/15/2015

City of Clayton
Landscape Mtn District CFD 2007-1 Fund 210
Adopted Budget 2014-15

Account Number	Account Name	2012-13 Actual	2013-14 Adopted Budget	2013-14 Projected	2014-15 Adopted Budget
7111	Salaries/Regular	175,559	162,632	162,632	159,880
7112	Temporary Help	69,573	94,150	94,150	98,110
7113	Overtime	87	-	-	-
7218	LTD Insurance	1,162	1,374	1,374	1,300
7220	PERS Retirement	38,548	40,784	40,784	38,750
7231	Workers Comp Insurance	7,416	9,966	9,966	11,420
7232	Unemployment Insurance	5,449	5,449	5,500	4,700
7233	FICA and Medicare	6,943	9,561	9,561	9,830
7246	Benefit Insurance	35,782	35,611	35,611	39,180
7311	General Supplies	33,924	43,000	43,000	43,000
7316	Landscape Replacement Material	3,498	20,000	20,000	20,000
7335	Gas & Electric Serv.	28,308	25,000	21,000	25,000
7338	Water Service	178,202	180,000	180,000	187,000
7342	Machinery/ Equip Maint.	12,682	10,000	10,000	10,000
7343	Vehicle Maintenance	4,480	12,000	12,000	12,000
7344	Vehicle Gas, Oil, and Supplies	12,850	10,500	14,800	15,300
7381	Property Tax Admin Cost	3,735	3,737	3,737	3,800
7389	Misc. Expenses	80	-	-	-
7411	Prof. Services Retainer	4,660	-	-	-
7412	Engineering Inspection	-	1,430	-	-
7419	Other Prof. Services	142,059	163,355	146,157	148,418
7486	CERF Charges/Depreciation	13,500	13,500	13,500	13,500
7520	Project/Program costs	19,145	82,900	61,807	207,000
7615	Property Taxes	2,447	2,893	2,506	2,600
8101	Transfer to General Fund	31,402	32,156	32,156	33,056
8111	Transfer to CIP Fund	468,801	-	9,887	-
8113	Transfer to Stormwater Fund	456	-	912	912
Total Expenditures		1,300,527	959,898	931,041	1,084,757
4604	Clayton LMD Assessment	954,704	978,034	978,034	1,005,224
5601	Interest	3,278	4,000	3,000	4,000
5790	Other Revenue	(400)	-	-	-
5702	Donations/Contributions	250	-	1,200	-
5606	Unrealized Inv Gain/Loss	(6,727)	-	-	-
Total Revenue		951,106	982,034	982,234	1,009,224
Increase (Decrease) in Fund Balance		(349,421)	22,036	51,194	(75,533)
Beginning Fund Balance		507,280	157,860	157,860	209,053
Ending Fund Balance		157,860	179,896	209,053	133,520

City of Clayton
 Landscape Mtn District CFD 2007-1 Fund 210
 Adopted Budget 2014-15

Account Number	Account Name	2012-13 Actual	2013-14 Adopted Budget	2013-14 Projected	2014-15 Adopted Budget
7311	General Supplies				
	Herbicides	-	16,000	16,000	16,000
	Fertilizer	-	7,000	7,000	7,000
	Irrigation	-	15,000	15,000	15,000
	Cole Supply	1,401	-	-	-
	Concord garded equipment	1,381	-	-	-
	Crop production services	6,357	-	-	-
	Bay Area Barricade	3,618	-	-	-
	John Deere Landscape	10,706	-	-	-
	Misc Supplies	10,462	5,000	5,000	5,000
		<u>33,925</u>	<u>43,000</u>	<u>43,000</u>	<u>43,000</u>
		(0)	-	-	-
7419	Other Professional Services				
	Wildland Resource Mgmt	5,900	-	-	-
	Environtech Enterprises (non-native invasive weed abatement)	45,199	59,000	59,000	59,000
	Outside arborist	-	-	-	-
	Permco - RFQ Noxious Weed Abatement	4,838	-	-	-
	Waraner Brothers -Tree trimming	16,138	25,000	25,000	25,000
	Waraner Bros Svc 1 x per yr+2 x trails	29,500	30,385	30,385	31,310
	NBS Admin Fees+Del letters	3,744	3,800	3,719	3,800
	Marlet Water Systems	807	-	-	-
	Rodent Control (PTM)	10,768	9,500	9,500	9,500
	Advertising for TEMP labor/Live Scans (City of Concord)	512	2,000	512	1,000
	Sprayer Sales Company (Spraytec - ww treatment)	1,670	2,241	2,241	2,241
	Water Feature Extra + repair contingency	4,184	5,000	2,000	5,000
	Water Feature \$650x12 (maintenance)	7,150	8,000	7,800	7,800
	Sub Division/City Entry Signs	1,976	4,000	4,329	2,000
	Daffodil Hill Landscape Mtn Supplies/water	-	12,830	-	-
	CCC Fire Protection - Operation Permit	231	231	303	400
	Paco Pumps - new pump	3,554	-	-	-
	Electrical repair - Cheyenne	5,867	-	-	-
	EBRCSA-Radio Mtn PW radio's	-	1,368	1,368	1,368
		<u>142,059</u>	<u>163,355</u>	<u>146,157</u>	<u>148,419</u>
		-	-	-	-
7520	Project/Program costs				
	Reserve Projects	-	-	-	-
	Trail Resurface - Bruce Lee Trail \$50k	-	-	-	-
	Trail Crack sealing/repair \$10k	-	-	-	-
	CL Rd Median/Roadway Re-Landscape \$328,0'	952	-	-	-
	Irrigation Central Controller System (project #4019 - \$30k)	18,193	-	11,807	-
	Tree Replacement Trimming \$10k	-	-	-	-
	Jeffrey Ranch ReLandscaping \$2.5K	-	-	-	-
	Keller Ridge Tree Replacement \$16.6K	-	-	-	-
	Open Space Fire Prevention Tree/Shrub Trim (one time)	-	30,000	30,000	30,000
	Keller Ridge St. Tree replacement (40 trees @ \$1,150 each/remove & replace)	-	29,400	-	46,000
	Jeffrey Ranch ReLandscaping	-	3,500	-	6,000
	Replace Irrigation Central Control Field Panel	-	20,000	20,000	20,000
	Daffodil Hill \$29k	-	-	-	-
	LMD bridge renovation project (trails) (\$70,000)	-	-	-	70,000
	Downtown planters (\$35,000)	-	-	-	35,000
		<u>19,145</u>	<u>82,900</u>	<u>61,807</u>	<u>207,000</u>
		(0)	-	-	-
8111	Transfers out to Capital Improvement Fund (303)				
	CIP 10429 "Trails Repave Project" (#3022)	50,000	-	9,887	-
	CIP 10430 "Landscape Median Project" (#3016)	318,601	-	-	-
	CIP10431 "Daffodil Hill Project" (#4020)	25,000	-	-	-
	CIP 10421 "Cardinet Trail Restoration Project" (#3016)	75,000	-	-	-
		<u>468,601</u>	<u>-</u>	<u>9,887</u>	<u>-</u>

Citywide Landscape Maintenance District — Fund No. 210

In June 2007, Clayton voters approved a replacement real property special tax to continue funding the operation and maintenance of their citywide public landscaped areas. This annual tax is restricted to costs associated with: arterial and specified roadway medians and parkways, the trails system, the annual open space noxious weed abatement in Oakhurst hills, the annual open space and trails weed abatement for fire and public safety, landscape and turf irrigation and the monthly maintenance and special occasion operation of the "Clayton Fountain."

Maintenance of City Parks *is not* included as an authorized expense under the District's Act; park maintenance obligations fall to the City's General Fund. *Citywide public landscaping services have always been funded by a special revenue tax levied on private properties throughout the City.* The District is completing its 5th year of a 10-year approved operation (Measure B), and its citizens' oversight committee (Trails and Landscaping Committee, or TLC) meets periodically to ensure the promised maintenance standards and efficiencies are achieved with these special-purpose tax revenues.

Pursuant to the terms of voter-approved Measure B, the special tax rate may be modified annually by the change in the Consumer Price Index (CPI; San Francisco —Bay Area) from April to April. In no event shall the tax rate be increased by more than 3% each year. The CPI change (from April 2014 to April 2015) posted at 2.44%. The District's revenue projection has been increased by that factor accordingly and is set at a total of \$1,005,419 for FY 2015-16, an annual increase of \$27,385. Adding the interest earnings of \$4,000 pushes the total revenue budget to \$1,009,419. Pursuant to its oversight charge, the citizens' TLC considered the CPI change and the District's budget at its meeting on June 8th and adopted a motion to recommend the City Council implement the 2.44% CPI annual rate adjustment.

With the District investing almost \$800,000 in public landscape improvements, irrigation and Trail system upgrades over the last three (3) years, the equity reserves of the District have been appropriately drawn down. Understandably then, the citizens' Trails and Landscape Committee as well as City staff agreed the Districts improvement projects should be slightly curtailed during FY 2013-14 in order to replenish the reserves for another large landscape project push. For FY 2014-15, the District has budgeted to fund the following landscape improvement projects:

a. Open Space fire prevention tree and shrub trimming:	\$ 30,000
b. Keller Ridge Drive landscaping improvements	\$ 29,400
c. Replace Irrigation System central control field panel:	\$ 20,000
d. Re-Landscape the Jeffry Ranch median island	\$ 3,500
e. LMD Bridge Renovation project	\$ 70,000
f. Downtown planters replacement project	\$ 35,000
Total	\$157,900

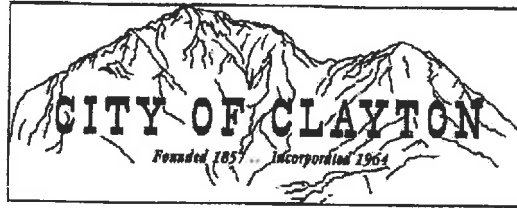
The installation and commencement of these significant landscape restoration and District improvement projects illustrate the success of the District in managing the voter's preference for a "pay-as-you-go" ballot tax measure. The defeated Measure "0" (2005) would have issued a revenue bond in its initial year to attack the public improvements sooner but conservative Clayton voters frowned on the higher annual assessment and the bonded indebtedness to be shouldered by the District. Entering the District's 8th year of operation still allows the accumulation of reserves to accomplish many of the planned objectives.

Personnel services for this labor-intensive work effort account for 33.7% of the District's budget this year (\$341,300), down slightly from the prior year's portion of 37.5% caused by less labor time being expended after new landscaping and irrigation systems are installed. Whenever possible, tasks within the District are assigned to temporary seasonal personnel that are less expensive labor (e.g. trimming), which shifts the permanent City maintenance personnel (5) to tasks requiring journeymen-level experiences (e.g. irrigation line and system repairs).

As approved by Measure "B" voters, the District's budget includes an annual expense of \$20,000 (Account 7316) for the purchase of replacement plants. The District further contributes its annual allocation of \$13,500 to the city's Capital Equipment replacement Fund (CERF), from which Maintenance vehicles and equipment are purchased for use in maintaining the Landscape District. An expense of \$33,056 (3.3% of annual district revenue) is transferred to the City's General Fund to pay for administrative and overhead activities of the City (e.g. telephones; payroll processing; accounts receivable and payable; District direction) attributable to administering the District's annual operations.

With all these actions, the District's ending fund balance on 30 June 2015 will still be a healthy \$219,572, which equates to a reserve of 21.8% of its annual tax revenue. The reserve status is confirmation the City does not siphon "surplus" monies of the District into its General Fund but uses the special tax revenue for its intended purposes.

END



MAINTENANCE WORK UPDATE TRAILS & LANDSCAPING

6/10/2014 to 3/16/15

- Spot spray and pull weeds in the Landscape District Citywide on a continuing basis.
- Irrigation systems have been shut off Citywide since November of last year. In the last two weeks some lawn areas have needed to be turned on with the warmer weather. Crews made repairs to the irrigation systems when the systems were in operation over the summer months and have started to make repairs as we head into the spring. As stated in past reports as the irrigation systems continue to age crews are finding more repairs from tree roots breaking the mainlines to parts failing from age. Over the past summer season Staff continued the monitoring of water usage to achieve the 15% reduction in water usage from historical levels (2005 to 2008) that the Contra Cost Water District had asked customers to achieve. Then customers were asked to bring in a 20% reduction in water usage that was mandated by the state this was due to the continuing severe drought in California. Looking forward Contra Costa Water at this time is still asking for the continued savings of 20% of historical usage but this could change when they get their water allocation later this year or the state of California asks residents for more and deeper savings.
- Continued our semi-annual trimming of the Landscape over the summer and winter in the following areas; Oakhurst Drive from City limits to Clayton Road, Clayton Road new medians from Center Street to Mitchell Canyon Road, Along Keller Ridge Drive, Along Eagle Peak Drive, Old Marsh Creek Road from Clayton Road to Stranahan subdivision, in the downtown area at the Post Office pathway and Tear Drop Island, Peacock Creek Drive, Marsh Creek Road from Clayton Road to City Limits, and completed the pruning of Crape Myrtle Trees within the Landscape District.
- Had the following area trees trimmed; removed one large Eucalyptus tree that had died on Lydia Lane, removed a large oak tree that died in Oakhurst open space off of Acorn Drive; the large tree trunk and branches were left in the open space as natural habitat. Safety trimmed trees on Marsh Creek Road in front of Stranahan Subdivision and Eucalyptus trees in the open space behind the homes on Petar Court. Lifted the ash trees along Atchinson Stage Road, Pine Hollow Road, Cardinet Trail, and North El Camino Drive. During the December storms had numerous trees mostly smaller ones and branches fall.
- Completed the fire abatement project around homes bordering on open space. The abatement consisted of the removal of any brush, dead vegetation, and the lifting of trees ten feet above ground level within a hundred feet of property line. Work has been completed along Keller Ridge Drive, Easley open space, Regency open space, and Diablo open space.



Memo

To: Trails and Landscape Committee

From: City of Clayton Maintenance Department

Date: 6/6/2014

Re: Deferred Maintenance Projects Status

There are four projects that were on the FY 13/14 adopted budget:

Jeffry Ranch cul-de-sac median re-landscaping: This project is on hold due to higher priority staff work items and the recent drought voluntary water reduction. The mature plants are more tolerant of reduced water; the lawn if it dies off will easily come back when rains re-appear. The staff will need to meet with the neighbors to get their input regarding changing out the current planting to eliminate the lawn and change out any larger plants that are getting near the end of their life, the goal to reduce the amount of time the maintenance staff spends. Alternatively the neighbors can maintain the area, some years back the neighbors had agreed to maintain but no written agreement was put into place and some of the neighbors have likely changed over. New shrubs will require more water than the established plants. Funds are being reset to continue with this project in the FY 14/15 budget.

Keller Ridge Drive Street Tree Replanting: This project is on hold due to the voluntary water reductions. Newly planted trees will require more water than in the past usage to get established. The funds for this project are being reset to carry forward with this project in the FY 14/15 budget.

Open Space Fire Prevention Tree/Shrub trimming/clearance (Oakhurst Open space area): This project will be completed by the end of June 2014. The contractor is about 66% completed. Areas completed are Peacock Creek/Pebble Beach; Miwok/Blue Oak. Left to do are Keller Ridge (end of cul-de sacs/street abutting open space) up to North Valley Park. Additional funds are being requested in the proposed FY 14/15 budget to continue this work in other areas of the City such as along the Easley Estates and El Molino area. (Note most of the Camdinet Trail from Library to Lydia Lane is actually property of the Oakhurst golf course and their responsibility for vegetation, the city has only a trail easement.)

Replacement of Irrigation Control Field Panels: This work is underway and ongoing.



Agenda Date: 3-16-15

Agenda Item: 5c

Memo

To: Trails and Landscape Committee
From: Maintenance Staff
Date: March 16, 2015
Re: Deferred maintenance Status – Pedestrian Trail Bridge Deck Replacement

The replacement of the Trail Pedestrian Bridge Deck Planks is moving forward with the specifications and the scope of work being assembled by staff into a bid packet for bidding. Plans are for the project to be advertised and go out to bid in the next month, with the award of contract within ninety days after that by the Clayton City Council. The plan is for the work to be completed over the summer months when work is allow around and in the Cities creeks (May 15 to October 15).



MAINTENANCE WORK UPDATE TRAILS & LANDSCAPING

3/17/2015 to 6/8/2015

- Spot spray and pull weeds in the Landscape District Citywide on a continuing basis.
- Started to turn on irrigation City wide, the Landscape District has been ordered by Contra Costa Water District to cut water usage by 45% from 2013 usage. See packet memo on the Cities policy for achieving this goal and water usage policy.
- Continued our semi-annual trimming of the Landscape in the following areas; Along Clayton Road from Peacock Drive to Oakhurst Drive (eastside), Clayton Road from North Mitchell Canyon Road to Lydia Lane, Atchinson Stage Road (North and South), Pine Hollow Road, Center Street Trail, and have started along Old Marsh Creek Road.
- Removed one Sycamore tree hit by a car on Clayton Road. Trimmed two Eucalyptus trees that were encroaching on Redwood trees along Clayton Road by Peacock Creek Drive.
- Completed the annual weed abatement for fire protection around homes bordering on open space City wide, adjacent to the roadway, and certain trails. The abatement consisted of the cutting down weeds a minimum of 30 feet behind homes bordering on Landscape District open space; those areas open areas adjacent to the roadway (ie: Clayton Road, old Marsh Creek Road); along the major trail/open space areas (ie: Carndinet, Bruce Lee/Mt. Diablo Creek, Donner Creek Trails); and open space areas along the Main Trail (Diablo Creek Court, El Molino/Samuel Court; Easley Estates).

2015 Drought Program

- CCWD Proposal to obtain 28% reduction
 - Residential / Commercial (25%)
 - Irrigation Meters (from 40% to 45%)!
 - Industrial (5%)
- Temporary increase treated water quantity charge by \$0.50 per unit (748 gallons). 14% rate increase.
- Residential use below 200 gallons per day; considered conserver and exempt from pricing adjustment.
- Rate eliminated when Governor lifts Executive Order.

Memo

To: Trails and Landscape Committee

From: Maintenance Supervisors

Date: June 8, 2015

Re: City's Water Rationing Plan

This is where the City stands at the beginning of May 2015 on the State of California's mandatory water rationing. This report was presented by the City Manager to the City Council at their May 19, 2015 meeting.

In general the City must reduce its irrigation water to watering no more than 2 x week. Although a majority of the District and city landscape is drought tolerant, has some areas with more current water efficient irrigation technology, the landscaping is not drought proof. Two times a week watering on the plants and trees may stress the plants – if (when) the later summer/fall hits with hot day temps and warm evening temps, it is likely there will be additional stress and plant die back or some plant demise.

The State of California recently established 9 tiers of water usage within the state for each water supplier and its consumption rates; Tier 9 is the highest water consumer. The Contra Costa Water District fell into Tier 7, which mandates an increase in consumer reduction of water usage: Residential/Commercial water usage will go to 28%; **Irrigation-only Meters to 45%**; and Industrial to 5%. **This revision means the City's parks and landscape irrigation meters must now reduce water usage by 45%.** To further incentivize water use reductions CCWD is imposing a **temporary increase in its treated water quantity charge by \$0.50 per unit (a unit equals 748 gallons); this equates to a 14% rate increase.** Residential usage below 200 gallons per day is considered to already be a conserver and will be exempt from the price adjustment. CCWD indicates the temporary rate increase will be eliminated when the Governor lifts the Executive Order mandating statewide water conservation.

General Policy

The City must cut back 40% from the City's actual 2013 water usage for outdoor water irrigation and 25% in the City's facility usage. These cuts will be greater than the cuts in 2009 because it is based on water usage in 2013 and not total landscape area using historical ET (EvapoTranspiration) rates, which was the method used in the 2009 drought. Staff is forecasting less water being allocated this year than in the 2009 drought and is planning accordingly. The City will not receive actual allocations from Contra Costa Water District (CCDW) until after June 4th when it expects to mail the allocation amounts out to all Contra Costa Water District (CCWD) customers. As in the past drought all of the City's landscape water meters are pooled together so City Staff may allocate its water where it is most needed within the landscaping.

In areas watered using Contra Costa Water District (CCWD) potable water, the outdoor irrigation schedule cannot be more than two days a week. Since lawns are the largest user of water and two days a week will likely not be sufficient to keep them green during the summer months, the following lawns will not be irrigated:

A. All lawns in the Landscape District except the:

- Clayton Fountain (due to recent landscape renovation, this area has a high efficiency irrigation system meeting the state's Water Conversation Ordinance) The City will water it just two days a week as mandated; if the irrigation system cannot keep the lawn area semi green with just the two day watering schedule, City Staff will reevaluate and determine if the system should be shut down during the summer months.
- The lawns in the Downtown area at the Oak Street exit/ramp to Main Street, the tear drop (roses and boxwood island) on Main Street, and the area surrounding the Holiday Tree. These areas receive water from an existing City groundwater well (see below for irrigation usage serviced by groundwater wells).

The following lawns at these City park will not be watered (irrigated by CCWD potable water):

- North Valley Park
- Stranahan Park

The Clayton Community Park will be irrigated for the allowed two days per week to try to keep the field's semi green for playing. At this time the irrigation runs Monday night and Thursday night with the irrigation water meters shut down in between to prevent loss of water from mainline breaks.

The parks in Westwood, The Grove, and Lydia Lane use groundwater well water. (see below for irrigation usage at well sites)

B. Lawns at City Buildings

The City Hall courtyard will initially be watered two days per week in attempt to keep area semi green. City Staff will reevaluate and determine if this system should be shut down during the summer months.

The Community Library grounds are irrigated using groundwater well water (see below for irrigation usage at well sites).

C. WATERING WITH CONTRA COSTA WATER DISTRICT (CCWD) POTABLE WATER

All landscaping supplied with water from the Contra Costa Water District (CCWD) must be watered under State Water Board and Executive Order regulations that have been announced, which include the following: only two days per week , no watering between 9am and 5pm, no run off, and repair breaks as soon as possible. Staff priority (as in previous years of drought conditions) has been to keep as many of the City's trees, then shrubs, and last the groundcover alive with the newest landscaping renovations getting top priority.

The following is being done to monitor/save water and meet the City's allocated water supply: Read water meters every two weeks; shut off water meters that will not be used this year; shut off exterior public drinking fountains to deter misuse and potential water theft; and lock all quick couplers to prevent water theft and misuse.

At this time City Staff has turned off outdoor drinking fountains in the City parks (except at the Dog Park). Staff will monitor water usage at the Dog Park and if it becomes excessive we will determine if water should be shut off. As of now, all water features (i.e., Clayton Fountain, City Hall courtyard fountain, and the new Splash Pad at The Grove Park) have been shut off for public perception or in the case of the Splash Pad it is non-recirculated potable water.

Public restrooms remain open at City facilities for public health reasons except the exterior City Hall courtyard restrooms. A posted sign redirects the public to use the restrooms at the Clayton Community Library.

D. WATERING WITH CITY GROUNDWATER WELL WATER

The City owns and operates several groundwater wells. At this time, groundwater wells supplying non-potable water (i.e. not for human use or consumption) are not subject to the State's mandatory water restrictions and regulations. City wells exist at the following locations:

1. Westwood Park and Lydia Lane Park

By separate agreement, the well water from these wells is used by the Oakhurst Country Club to irrigate its private golf course; well water is also used to irrigate Westwood Park. The wells are monitored monthly by separate contract (paid by Oakhurst); should the groundwater levels of these wells dip below a pre-determined depth, the wells are shut down and each user (Oakhurst; City; Westwood HOA) must convert to pre-connected potable water supplied by CCWD and then subject to the State's outdoor irrigation restriction of no more than 2 days per week.

2. Clayton Community Library

This groundwater well, in addition to irrigating the Library grounds, supplies the water to irrigate the Clayton Road landscape from the Oakhurst Drive intersection to the Mitchell Canyon Road intersection, along old Marsh Creek Road from Clayton Road to Main Street, at the Town Center Sign grounds, and at the Main Street tear drop island.

3. The Grove Park

This groundwater well in the vicinity of the U.S. Post Office, is used to irrigate The Grove Park landscape and lawn, waters the Endeavor Hall landscaping, the landscape around the Endeavor Hall public parking lot, and the Center Street raised planter boxes.

Although not subject to the State's water restrictions, these City groundwater wells have been voluntarily limited to irrigate/water no more than three days in a one week period to help conserve these water supplies and to lead by example in reducing water usage.

* * * * *

Adopt a Trail updated as of 3/10/15

Adopters/Revenues

<u>Name</u>	<u>Sponsor Type</u>	<u>Trail Section</u>	<u>Amount Recvd</u>	<u>Date \$ Recvd</u>	<u>Ag. recvd</u>	<u>Start Date</u>	<u>Expiration Date</u>
Sudderth Family CBCA	Volunteer Labor	Cardinet Trail (Library - Lydia Ln Pk)	\$200	8/12/2013	Yes	9/1/2013	3/1/2015
	Financial	Cardinet Trail (Library - Lydia Ln Pk)	\$1000	8/12/2013		9/1/2013	3/1/2015
Passport2Clayton (P2C) Passport2Clayton (P2C)	Volunteer Labor	Bruce Lee Trail (Upper Easley Trail)	\$200	2/1/2011	Yes	3/1/2011	3/1/2012
	Financial Sponsor	Bruce Lee Trail (Upper Easley Trail)	\$1000	2/1/2011		3/1/2011	3/1/2012
Employees of CD Federal Credit Union Discovery Builders	Volunteer Labor	Blue Oak Trail	\$200	2/9/2011	Yes	3/1/2011	3/1/2012
	Financial Sponsor	Blue Oak Trail	\$1000	2/17/2011		3/1/2011	3/1/2012
Siegel Family <u>Available</u>	Volunteer Labor Financial Sponsor	Lower Easley Trail Lower Easley Trail	\$250	1/7/2013	Yes	TBD	TBD
<u>Available</u> <u>Available</u>	Volunteer Labor Financial Sponsor	Cardinet Trail (Lydia Ln Pk - Westwood Pk) Cardinet Trail (Lydia Ln Pk - Westwood Pk)					
<u>Available</u> <u>Available</u>	Volunteer Labor Financial Sponsor	Donner Creek Trail Donner Creek Trail					

Adopt a Trail Expenses

<u>Date</u>	<u>purpose</u>	<u>Amount</u>
3/8/2009	19.5 hrs maintenance temp labor make/ install signs	\$219.00
4/17/2009	materials for sign posts	\$1527.34
6/23/2009	signs printing (bay area barricade)	\$98.87
6/30/2009	t-shirts	\$289.51
8/9/2009	wood for future sign posts (Dolan's Lumber)	\$595.15
8/9/2009	sign printing (Bay Area Barricade)	\$10.93
5/14/2010	Clayton Pioneer Ad	\$200.00
8/31/2011	sign re-screening	\$10.82
8/31/2011	Signs (Bay Area Barricade)	\$209.35
8/31/2011	27 hrs maintenance reg/temp labor make/install signs	\$1116.80
11/30/2011	Oak tree lights (trail by library)	\$3305.98
11/30/2011	electric wire and parts for oak tree lights (trail by Library)	\$437.00
12/30/2011	17 hrs reg/temp labor install oak tree lights (trail by library)	\$697.00
	<u>Additional expenses for latest adopters signs and installation unknown</u>	<u>TBD</u>
	Total Expenses to date (NOT including outstanding expenses for latest signs and relocation)	\$8717.75

Donations

Renewal and New as of 6/30/14	\$1450
Prior donations	\$9250
	\$10,700

6/30/2014 Account Balance: \$10,700-\$8715.75 = **\$1982.25** (this amount will be reduced based upon outstanding expenses yet to be determined)

Agenda Item: 69

Agenda Date: 3-16-15



ADOPT A TRAIL



The program aims to:

- Augment financing provided by Measure B the voter approved Landscape Maintenance District, all funds from program sponsors and volunteers also known as adopters are used for the program and trail system maintenance only.
- Provide a venue for volunteers to help Clayton maintain and enhance its trail network
- Make the trails cleaner
- Celebrate the sponsors and volunteers that help Clayton keep the trail network one of the distinguishing characteristics of our community
- Foster civic pride through volunteerism, philanthropy, and cleanliness

The Trails and Landscape Committee has initially identified 11 trail segments to adopt. Each segment has a financial adopter and a clean-up adopter. Besides paying the every two year fee (\$1,000 for financial adopters and \$200 for clean-up adopters), clean-up groups must identify a leader/contact person and complete the attached form. Adopters are recognized on their trail segment with a name plaque on a trail marker. Markers are installed at the time a financial sponsor is found for that trail segment.

Segments are assigned on a first-come, first-served basis. Adopters wanting recognition on the trail markers must also provide information that conforms to the city design specs for the markers.

If you are interested in participating in this program or would like additional information please contact Committee member **Christopher Garcia** at email: chrisLgarcia@hotmail.com



City of Clayton
Clayton Adopt-a-Trail Program

APPLICATION

Date: _____

Adopt-a-Trail Group: _____

TYPE OF Sponsor (circle one) Financial Labor-Clean Up

Group Contact: _____

Contact's Mailing Address: _____

Phone Number: _____ Email: _____

Requested Segment to
Adopt: _____

Tentative Start Date: _____

Average number of volunteers per work day: _____

STATEMENT OF AGREEMENT

As representative of this organization, I have read and agree to abide by the policies, regulations and safety recommendations as put forth by the City of Clayton's Public Works and Engineering Department. I understand that this is an application for the Adopt-a-Trail program and that a representative from the city will contact me to finalize an agreement. I understand that the Department will make the final determination as to whether a group can participate and the final segment assignment designation. I understand that each volunteer must sign a City of Clayton Voluntary Service Agreement and Liability Waiver before participating in the program. Finally, I understand that the city reserves the right to terminate this agreement at any time.

Adopter/sponsor Group Coordinator -Contact

Name print

(signature/date)

ADOPT-A-TRAIL WORK PLAN : Sponsor/Adopter Name _____

Proposed Program Plan for: _____
[Insert Trail Segment Name]

Adopt-a-Trail Projects could include but are not limited to the following items, please mark all that apply to your project. This must be approved by the Department of Public Works and Engineering before work can begin.

Suggested Project Items

- Pick up litter and debris (required)
- Remove weeds (required)
- Raking and sweeping (required)
- Minor repairs of surfaces/furnishings
- Other _____
- Monitor/report maintenance needs (req)
- Plant trees*
- Plant and maintain flowerbeds*

* The planting of all flowers, trees and other plants must be pre-approved by the city. Support for special projects by adopting organizations will be arranged through the Trails and Landscaping Committee.

WORK SCHEDULE

Each group is required to have at least one work day every 4 months (total of 3 per year). Please list tentative dates for each work day. You will be expected to inform the Department of any date changes **at least 2 weeks in advance.**

Work Day #1 _____	Additional Work Days _____
Work Day #2 _____	_____
Work Day #3 _____	_____

Name(print)

(signature/date)
Financial and/or Volunteer Clean up
Group Coordinator

Trails Landscape Committee member Name (print)

(signature/date)
Trails and Landscaping Committee member

POLICIES

- The city will provide necessary trash bags, debris pickup, and hauling to ensure the success of ongoing tasks.
- Adopting organizations may keep and haul away for resale off site all recyclable trash they pickup.
- No one under the age of 14 may participate without adult supervision.
- While performing services at special project sites adopters will conform, at a minimum to the State of California Standard Specifications for hours of work, noise abatement, traffic control, erosion control, fire protection and management of materials.

(signature/date)

Group Coordinator

(signature/date)

[for the Trails and Landscaping Committee]

**Please return application to Christopher Garcia, Trails and Landscape Committee member c/o Clayton City Offices, 6000 Heritage Trail, Clayton CA 94517
For questions, please contact Christopher Garcia at chrisLgarcia@gmail.com**

Payment received: _____
Date

By: _____



EXAMPLE OF TRAIL MAKERS WITH ADOPTER/SPONSOR PLAQUE

CITY OF CLAYTON

Peacock
Creek
Trail



1.27 Miles

Trail Grade
75% Steep
25% Level

Surface
Crushed Granite

This Trail Segment Adopted By:

COMCAST
Cable

Clayton Valley
Little League

↑↓ 12" overall
sign
height

←→ 6" total sign width



8"x 8" wood mitered routed post w/metal sign
(brown background/white lettering) mounted inset onto post

Pass

Rd

High Rd

Kirker
Pass
920

Concord
Pavilion

Entrance

1033

Kirker

Kirkwood Dr

Concord Rd

CLAYTON CITY LIMIT

FAIRWAY TR

Oakhurst Golf Course

Sceno Hill (private)

Keller

Ridge

Clayton Station shopping center

Av

Ohman Pl

Ohlone Heights

Milwok Wy

Wagonwheel

Concord

Oakhurst

Oakhurst Golf Course

Blue Oak Hill

Lydia Ln

Clayton Rd

Lower

Blue Oak Tr

1080

Pine Hollow

Yosemite




Clayton Rd

Black Diamond

Peacock

1000

LEGEND

-  INITIAL TRAIL MARKER
-  OPTIONAL TRAIL MARKER
-  POTENTIAL FUTURE TRAIL MARKER

Note: All locations are approximate. Some locations may need to be modified in their location due to filed conditions. Final location subject to City of Clayton Maintenance staff.

State Park
Headquarters
Staging area
Interpretive
Center

Murchio Flats

Hoyer Hill

Clayton

Yosemite

Clayton Rd

Black Diamond

Peacock

1000

Pine Hollow

Yosemite




Clayton Rd

Black Diamond

Peacock

1000

LEGEND

-  INITIAL TRAIL MARKER
-  OPTIONAL TRAIL MARKER
-  POTENTIAL FUTURE TRAIL MARKER

Note: All locations are approximate. Some locations may need to be modified in their location due to filed conditions. Final location subject to City of Clayton Maintenance staff.

State Park
Headquarters
Staging area
Interpretive
Center

Murchio Flats

Hoyer Hill

CLAYTON'S TRAILS & LANDSCAPE COMMITTEE (TLC)

Formed by the Clayton City Council in August 2007.

Comprised of up to 11 volunteer members of the Clayton community

Helps the city implement the voter-approved plan to manage the current and future needs of the citywide Landscape Maintenance District

Helps to manage and support Clayton's Adopt-A-Trail program



Serves as a financial oversight committee and provides short and long term implementation guidance to city staff and the City Council

The Landscape Maintenance District consists of roadway edge and roadway median landscaping, trail maintenance, and fire abatement on trails and open space (city parks and the Clayton fountain operation are not included in the district)

Funds can only be used for spending within the Landscape Maintenance District

GET INVOLVED!

The Trails and Landscape Committee meets quarterly on the 3rd Monday of the month at 7pm at the Clayton Library

Clayton residents are encouraged to attend these meetings to provide public opinion and ask questions

Meeting agendas are posted online:
City web site at www.ci.clayton.ca.us

Printed copies at:
City Hall, 6000 Heritage Trail;
Clayton Library, 6125 Clayton Road;
Ohm's Bulletin Board, 1028 Diablo St

Please direct any questions or concerns to the City of Clayton via the website or address above

2015 Trails & Landscape Committee Members

Larry Casagrande (Chair)
Clayton Smith (Vice Chair)
A.J. Chippero
Robert Erich
Christopher Garcia
Howard Glazier
Harun Simbirdi
Alyse Smith
Bob Steiner
Howard Geller (Ex-Officio)



Trails & Landscape Committee
2015

THE LANDSCAPE MAINTENANCE DISTRICT: CLAYTON'S "FRONT YARD"

The Landscape Maintenance District covers:

- over 2 million square feet of landscape
- 40,700 square feet of lawns and flowerbeds
- Almost 3,000 city trees
- 515 acres of open space
- 7 miles of creek side trails
- 20 miles of open space trails
- Approximately 50 street islands and medians

The District uses the equivalent of only three full time staff along with seasonal and volunteer workers

HOW IS THE DISTRICT FUNDED?

Measure B, a special 10-year special parcel tax passed by Clayton voters in June 2007 funds the District

Measure B is the only source of funding for the Landscape District supplies, electricity, irrigation, water, and labor

Funds may only be used for voter approved Landscape District expenses

Trails & Landscape Committee

ADOPT-A-TRAIL

If you are one of the many Clayton residents that enjoy our trail system you can further help the Landscape Maintenance District and beautify Clayton's trails by Adopting a Trail

This program aims to:

- Augment financing provided by Measure B
- Provide a venue for volunteers that help Clayton maintain and enhance it's trail network
- Make the trails cleaner
- Celebrate the sponsors and volunteers that help Clayton keep the trail network one of the distinguishing characteristics of our community
- Foster civic pride through volunteerism, philanthropy, and cleanliness

If you are interested in participating in this program or would like additional information please contact



TLC's STRATEGIC FOCUS

- Remove unwanted expenditures and control costs with strict oversight
- Create equity in the District
- Implement cost effective measures to improve irrigation and infrastructure
- Invest in modern equipment to increase maintenance efficiency and effectiveness
- Implement seasonal and situational based labor to minimize costs
- Adjust irrigation watering as necessary to comply with any drought water reduction mandates

STANDARDS & PRIORITIES FOR THE DISTRICT

- Mandatory firebreaks
- Weeds trimmed along major trails and creeks twice a year
- Trees trimmed for safety purposes
- Irrigation breaks repaired as necessary
- Public roadway landscaping trimmed twice a year
- Landscape areas fertilized once a year as necessary

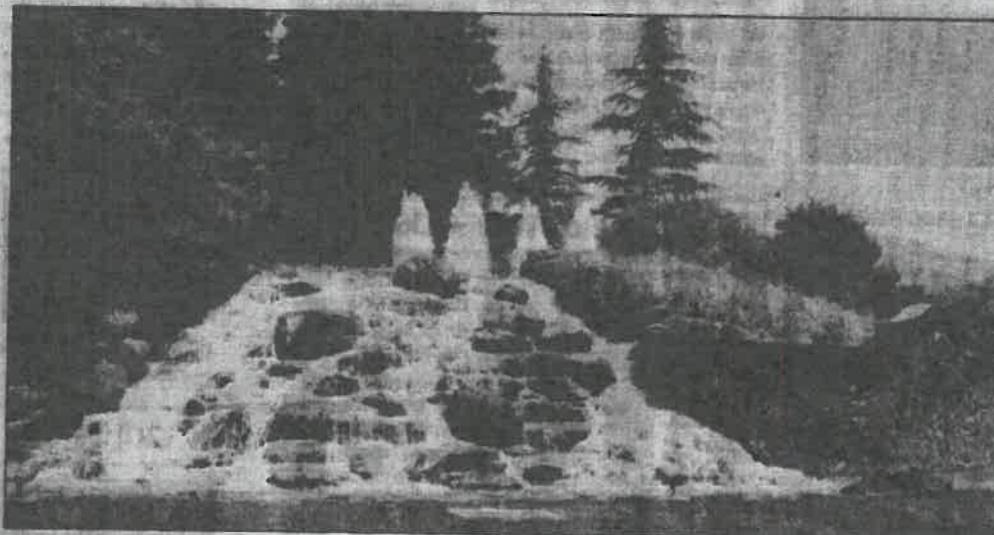
City to cut water usage by 40%

PEGGY SPER
Clayton Pioneer

Get ready, Clayton. Brown is the "in" color for summer, at least for lawn and turf.

Residents and communities across the state are mandated to cut their water usage by at least 25 percent this summer, the fourth year of a historic drought. The City of Clayton is no exception, as they are cutting back water usage a whopping 40 percent from 2018 levels, said City Manager Gary Mapper.

"The state's extended drought represents a serious challenge for all in California and requires each resident and property owner in Clayton to prioritize one's water consumption habits," he said. "For the city, our 40-43 percent reduction in water usage, in comparison to the 25 percent reduction assigned residential users, necessitates staff evaluate which water-dependent assets and facilities are the more essential to retain and operate."



Tamara Steiner/Clayton Pioneer

TAKE A GOOD LONG LOOK—THIS IS A SIGHT CLAYTONIANS WON'T SEE FOR AWHILE. The Clayton fountain has gone dry and will stay that way indefinitely, another casualty of the drought and the governor's mandate to cut water use by 40 percent. Drinking fountains in the parks and the new water feature in The Grove are also turned off to meet cutback requirements.

For example, he said, landscaped plants and specimen trees will be the targets of the city's limited outdoor irrigation

at the sacrifice of lawn and turf. The two-days per week outdoor irrigation constraint imposed on residents by the Contra

Costa Water District last month also applies to the city and "we'll undoubtedly see visual stress to trees and plants as the

hot summer days set in."

"It is no longer 'business as usual'" he said.

Clayton residents will undoubtedly see the stress on lawns and turf, but some areas, such as The Grove Park and some downtown areas, are served by well water, and can be watered three times a week. The main area that will be affected, according to Clayton's Maintenance Supervisor Mark Janney, is the Community Park and fields, which will only be watered twice a week.

"They won't look so great," he said.

Historically, Janney said, the city uses about 300,000-400,000 gallons per day, but it has been cutting back that usage in recent years due to the drought. So cutting nearly half of that will definitely impact what the residents

See Water Cuts, page 9

Water cuts, from page 1

see in public areas around town. When the city faced similar cutbacks in 2009, trees, shrubs, groundcovers and newer planting areas were given watering priority over turf, Janney said. That will again be the priority.

In a recent memo to his staff, Napper outlined the water cutbacks. On the "hit list" were all public landscaped lawns, except the Clayton Fountain. Due to recent landscape reactivations, this area has a high-efficiency irrigation system meeting the state's Water Conservation Ordinance. The city will water it just two days a week as mandated; if the irrigation system can't keep the lawn area semi-green with just the two day watering schedule, city staff will reevaluate and determine if the system should be shut down during the summer months.

Lawns that will not be watered include North Valley Park and Stranahan Park. As Janney said, the Clayton Community Park will be irrigated for

the allowed two-days-per-week to try to keep the fields semi-green for play. At this time, the irrigation runs Monday night and Thursday night with the irrigation water meters shut down in between to prevent loss of water from mainline breaks.

GROUNDWATER WELLS HELP

Luckily, like some of the downtown areas, the parks in Westwood, The Grove, and Lydia Lane all use groundwater well water, which aren't subject to the state water restrictions and can be watered three times a week.

Other areas that will be excluded from cutbacks include the lawns in the downtown area at the Oak Street exit and ramp to Main Street, the tear drop (roses and boxwood island) on Main Street, and the area surrounding the Holiday Tree. These areas receive water from an existing city groundwater well.

Another area that uses

groundwater is around the Clayton Community Library. This well, in addition to irrigating the library grounds, supplies the water to irrigate the Clayton Road landscape from the Oakhurst Drive intersection to the Mitchell Canyon Road intersection, along old Marsh Creek Road from Clayton Road to Main Street, at the Town Center Sign grounds, and at the Main Street tear drop island.

Napper also said that all landscaping supplied with water from CCWD must be watered only two days per week, with no watering between 9 a.m. and 5 p.m., no run-off, and breaks must be repaired as soon as possible.

"It's a big deal," said Clayton City Councilwoman Julie Pierce. "Luckily we have planted many drought-tolerant plants throughout the city, so we'll just have to see how they stand up to the hot summer months. I'm sure by September many of the plants and lawns in Clayton will be showing stress."

"It's a serious problem," she says. "We have to cut back."

OAKHURST CUTTING BACK

Also cutting back is the Oakhurst Country Club, said General Manager Tony Eichets. The golf course's fairways and the roughs will be watered just twice a week, with the greens and tees three times, but only in the evening hours.

"It actually will make the fairways harder, which make the balls go faster," he said. "Our users might like it better." Oakhurst buys well water from the City of Clayton, which allows for the additional watering.

"I think we'll be able to keep the greens in good shape, but it's the ancillary areas that will suffer," he said, including the patches of grass facing Clayton Road, and areas around the pool and tennis courts. They will be cut down to twice a week watering.

"We need to do our part, too, to conserve water," he said.

He doesn't foresee any fee adjustments because of the drought situation, but he will ask golfers to drive carts on the trails and not on the grass because that will distress the greens even more.

Memo

To: Trails and Landscaping Committee
From: Assistant to the City Manager, Laura Hoffmeister
Date: January 11, 2016
Re: Mid-Year Budget Status

Attached is the Landscape Budget information detail. Since the review by the TLC in June and subsequent adoption by the City Council there have been some budget adjustments. The Lower Easley Trail was able to be repaved which the City Council approved at a cost of \$30,000. This was the last section of existing paved trails that was in poor condition that had not been recently repaved. It had been about 20 years since the trail was last paved. Additionally the paved pedestrian trail connecting the Mt Diablo Elementary School to the downtown needed to have drainage issues fixed (both on school grounds by the School District, and the adjacent slope area adjacent to the trail by the City) and was in need of repaving at a cost of \$19,800. The original approval of replacing the pedestrian bridges budgeted at \$70,000 also was completed, however the final cost was \$9,030 more than originally budgeted. This budget exceedance will be formally amended into the budget expenses as part of the City Council mid-year budget review.

The subdivision entry way redesign project has not had any expenses as yet, City staff has recently undertook the preparing concept plans for the TLC review. Additional detail construction drawing level work is expected to be done later this year. The downtown planter box project replacement project has also not had any expenses as staff has not yet started work on this item, however it is expected to be undertaken this early spring.

All other expenses at mid-year are on track and staff does not foresee any issues at this time. It should be noted that the water expenses are less than 50% of budget at mid-year due to water district billing on a two month cycle and we have not received most recent billings. Additionally most of the water use occurs in the spring/early summer depending on weather (rain) conditions. However with the drought and water reduction measures staff undertook it could be that the expenses may be less than budgeted.

City of Clayton
 Landscape Mtn District CFD 2007-1 Fund 210
 Adopted Budget 2015-16

Account Number	Account Name	2013-14 Actual	2014-15 Adopted Budget	2014-15 Adjusted Budget	2014-15 Projected	2015-16 Adopted Budget	2015-16 Adjusted Budget	2015-16 Year to Date 12/31/2015	
Expenses									
7111	Salaries/Regular	146,944	159,880		136,000	138,000		57,150	
7112	Temporary Help	86,546	98,110		75,000	81,000		22,254	
7113	Overtime	102	-		500	500		137	
7218	LTD Insurance	1,287	1,300		1,100	1,300		505	
7220	PERS Retirement	37,007	38,750		32,000	42,200		17,056	
7231	Workers Comp Insurance	8,902	11,420		12,141	10,400		10,931	
7232	Unemployment Insurance	4,041	4,700		4,700	3,900		0	
7233	FICA Taxes	8,652	9,830		7,000	8,200		2,934	
7246	Benefit Insurance	36,909	39,180		28,000	28,000		12,934	
7311	General Supplies	28,253	43,000		48,500	48,500		11,324	See breakdown below
7316	Landscape Replacement Material	1,596	20,000		20,000	20,000		0	
7335	Gas & Electric Serv.	23,284	25,000		24,000	25,000		7,434	
7338	Water Service	132,232	187,000		150,000	156,000		49,304	(water bill received every two months)
7342	Machinery/ Equip Maint	13,427	10,000		22,600	22,600		3,578	See breakdown below
7343	Vehicle Maintenance	6,006	12,000		19,400	20,000		8,995	
7344	Vehicle Gas, Oil, and Supplies	15,274	15,300		12,000	15,000		3,890	
7381	Property Tax Admin Cost	3,734	3,800		3,800	3,800		2,054	
7382	Election Services	-	-		-	10,000		0	
7411	Professional Services Retainer (Legal)	-	-		1,000	10,000		0	Legal services contract review
7419	Other Prof Services	142,936	148,419		157,468	149,500		19,702	See breakdown below
7486	CERF Charges/Depreciation	13,500	13,500		13,500	13,500		13,500	
7520	Project/Program costs	43,752	207,000		45,000	526,800		128,830	See breakdown below
7615	Property Taxes County Collection costs	2,506	2,600		2,576	2,700		2,638	
8101	Transfer to General Fund	32,156	33,056		33,056	33,863		16,932	
8111	Transfer to CIP Fund	9,887	-		-	-		-	See breakdown below
8113	Transfer to Stormwater Fund	912	912		912	912		912	
Total Expenditures		799,845	1,084,757		850,253	1,371,675		392,994	
Revenues									
4604	Clayton LMD Assessment	978,034	1,005,224		1,005,224	1,029,751		566,249	
5601	Interest	3,200	4,000		4,200	4,000		2,663	
5702	Donations/Contributions	1,200	-		-	-		-	
5606	Unrealized Inv Gain/Loss	(287)	-		-	-		-	
6003	Transfer from CIP Fund	-	-		259,704	-		-	
Total Revenue		982,147	1,009,224		1,269,128	1,033,751		568,912	
Increase (Decrease) in Fund Balance		182,302	(75,533)		418,875	(337,924)			
Beginning Fund Balance		157,860	340,162		340,162	759,037			
Ending Fund Balance		340,162	264,629		759,037	421,113			

City of Clayton
 Landscape Mtn District CFD 2007-1 Fund 210
 Adopted Budget 2015-16

Account Number	Account Name	2013-14 Actual	2014-15 Adopted Budget	2014-15 Adjusted Budget	2014-15 Projected	2015-16 Adopted Budget	2015-16 Adjusted Budget	2015-16 Year to Date 12/31/2015
7311	General Supplies							
	Bay Area Barricade	1,855			4,703	5,000		
	Cole Supply	3,448			-	-		
	Concord Garden Equipment	414			-	-		
	Crop production services	4,624			586	1,000		
	Fertilizer	-	7,000			5,000		
	Grainger	292	-		-	-		
	Herbicides	-	16,000			10,000		
	Irrigation	-	15,000			10,000		
	John Deere Landscape	10,716			9,863	10,000		
	Misc Supplies (Calcard - US Bank)	6,904	5,000		5,617	7,500		
		28,253	43,000		20,769	48,500		
		-	-		(27,731)	-		
7342	Machinery/Equipment Maintenance							
	Concord Garden Equip/Supplies	3,983	4,000		4,335	5,300		
	Concord Trailer World	1,356	-		-	-		
	Contra Costa Tractor	5,825	5,000		13,077	15,700		
	John Deere Landscape	2,051	-		-	-		
	US Bank (Calcard)	212	1,000		1,171	1,600		
		13,427	10,000		18,583	22,600		
		-	-		(4,017)	-		
7419	Other Professional Services							
	CCC Fire Protection - Operation Permit	303	400		-	600		
	Advertising for TEMP labor/Live Scans	192	1,000		219	1,000		
	Creative Fencing - Redwood fencing	749	-		2,250	-		
	Daffodil Hill Landscape Mtn Supplies/water	-	-		-	-		
	Sub Division/City Entry Signs (contingency)	4,329	2,000			2,000		
	EBRCSA-Radio Mtn PW radio's	1,368	1,368		1,300	1,300		
	Environtech Enterprises (non-native invasive weed abatement)	59,000	59,000		64,800	59,000		
	Martel Water Systems (Well pump repairs)		-		1,531	-		
	NBS Admin Fees+Del letters	3,719	3,800		3,836	3,800		
	Paco Pumps - new pump		-		-	-		
	Permco - RFQ Noxious Weed Abatement		-		-	-		
	PMT Pest Control - Rodent Control	7,212	9,500		1,320	9,500		
	Rock & Waterfall Water Feature \$650x12 (maintenance)	7,800	7,800		5,850	7,800		
	Rock & Waterfall -Water Feature Extra + repair contingency		5,000		650	5,000		
	Spraytec - maint- waste water treatment	2,054	2,241		1,307	2,250		
	Waraner Bros Svc 1 x per yr+2 x trails	34,135	31,310		-	32,250		
	Waraner Brothers -Tree trimming	22,912	25,000		17,225	25,000		
	Misc. Adjustment	(837)	-		-	-		
		142,936	148,419		100,288	149,500		
		-	-		(57,180)	-		

City of Clayton
 Landscape Mtn District CFD 2007-1 Fund 210
 Adopted Budget 2015-16

Account Number	Account Name	2013-14 Actual	2014-15 Adopted Budget	2014-15 Projected	2015-16 Adopted Budget	2015-16 Year to Date 12/31/2015
7520	<u>Project/Program costs</u>					
	LMD2015-1 - Downtown planters (\$35,000)	-	35,000	-	35,000	0
	LMD2015-2 - Jeffrey Ranch Relandscaping	-	6,000	-	6,000	0
	LMD2015-3 - Keller Ridge St. Tree replacement (40 trees @ \$1,150 each/remove & replace)	-	46,000	-	46,000	0
	LMD2015-4 - LMD bridge renovation project (trails) (\$70,000)	-	70,000	-	70,000	79,030
	LMD2015-5 - Replace Irrigation Central Control Field Panel	-	20,000	-	20,000	0
	LMD2016-1 - Entry Ways Re-Landscaping Project (\$300k)	-	-	-	300,000	0
	Irrigation Central Controller System (project #4019 - \$30k)	6,360	-	-	-	-
	Diablo Glass - repair display glass	42	-	-	-	-
	Warner Bros. - Open Space Fire Prevention	37,350	30,000	15,700	-	0
	<u>PROJECTS ADDED AFTER ADOPTION/Amended into Budget</u>					
	LMD2016-2 - Lower Easley Trail	-	-	-	30,000	30,000
	LMD2016-3 - Mt. Diablo Elem School Trail Hill	-	-	-	19,800	19,800
		43,752	207,000	15,700	526,800	128,830
		-	-	(29,300)	-	-
8111	<u>Transfers out to Capital Improvement Fund (303)</u>					
	CIP 10429 "Trails Repave Project" (#3022) completed prior years	9,887	-	-	-	-
	CIP "Clayton Water Feature re-landscape) completed prior years	-	-	-	-	-
	CIP 10430 "Landscape Median Project" (#3016) completed prior yrs [Clayton Rd; Okahurst Blvd]	-	-	-	-	-
	CIP10431 "Daffodil Hill Project" (#4020) completed prior yrs	-	-	-	-	-
	CIP 10421 "Cardinet Trail Restoration Project" (#3016) not started	-	-	-	-	-
		9,887	-	-	-	-

Notes:

Extra to run pump for fountain
 10 events (31 days @ \$160=\$4960.)
 Art n Wine, Memorial Day, 4th of July, Halloween
 Parade/Ghost Walk, Veterans Day, Xmas Tree
 Lighting,
 Presidents Day, Thanksgiving, Garden Tours,
 Oktoberfest

<u>EBRCSA Breakdown - FY 15 -16</u>	
<u>(Emergency Radio System annual</u>	
8,808	Police Dept
206	Gas tax
1,368	Landscape District
206	grove park
206	street lights
206	stormwater
400	pw - 03
11,400	

**LANDSCAPE PROJECT
ENTRY MEDIANS REDESIGN**

The Median Entries would be landscaped in a more formal appearance using hard scape, lighting, and shrubs. This would be like the landscaping installed on Clayton Road in the Median from Heritage Trail to Oakhurst Drive. Costs are only estimated using construct costs from the Clayton Road project in 2012 as a guide.

Eagle Peak Drive and Oakhurst Drive (south)

AERA: 215x15 feet - 3230sqft.

IRRIGATION: Has one station that runs the complete median needs to be upgraded

CONTROLLER: Needs and upgrade to smart controller to meet water conversation ordinance

POWER: No

ESTIMATED COST TO LANDSCAPE:\$52,837

Keller Ridge Drive and Eagle Peak Drive

AREA: 100 x 10 feet – 1000sqft.

IRRIGATION: Has one station that runs the complete median needs to be upgraded

CONTROLLER: Needs and upgrade to smart controller to meet water conversation ordinance

POWER: Yes also entry sign on median

ESTIMATED COST TO LANDSCAPE:\$22,620

Eagle Peak Drive and Oakhurst Drive (north)

AREA: 55 x 10 feet – 550sqft.

IRRIGATION: Hook up to both sides of entry all would need upgrading

CONTROLLER: Needs and upgrade to smart controller to meet water conversation ordinance

POWER: Yes also entry sign on median

ESTIMATED COST TO LANDSCAPE:\$12,818

Peacock Creek Drive at Clayton Road first median

AREA: 150 x 8 feet – 1200sqft

IRRIGATION: Has one station that runs the complete median needs upgrading

CONTROLLER: Needs an upgrade to smart controller to meet water conversation ordinance

POWER: No

ESTIMATED TO LANDSCAPE:\$25,644

Regency Drive at Marsh Creek Road

AREA: 250 x 10 feet – 2500sqft

IRRIGATION: No – needs whole system installed; mains, valves, laterals (may need new meter)

CONTROLLER: None (may need to be added) or new smart controller installed in existing landscape

POWER: No

ESTIAMATED TO LANDSCAPE:\$37,950

Entry to City on Marsh Creek Road at Diablo Parkway

AREA: 60 x 12 feet – 720sqft. (east side) 40 x 12 feet – 480sqft (west side) Brick East 400sqft. and West 400sqft.

IRRIGATION: No - needs whole system installed; mains, valves, laterals

CONTROLLER: No needs a smart controller to meet water conversation ordinance

POWER: No

ESTIMATE TO LANDSCAPE:\$48,944

Marsh Creek Road east side from Town Center Sign to Center Street

AREA: Clayton Road to Corral – 330 x 8 feet – 2640sqft. Corral to Center Street 110 x 5 – 500sqft.

IRRIGATION: Multiple systems needed to be upgraded

CONTROLLER: Yes smart controllers installed

POWER: Yes

ESTIMATE TO LANDSCAPE:\$47,476

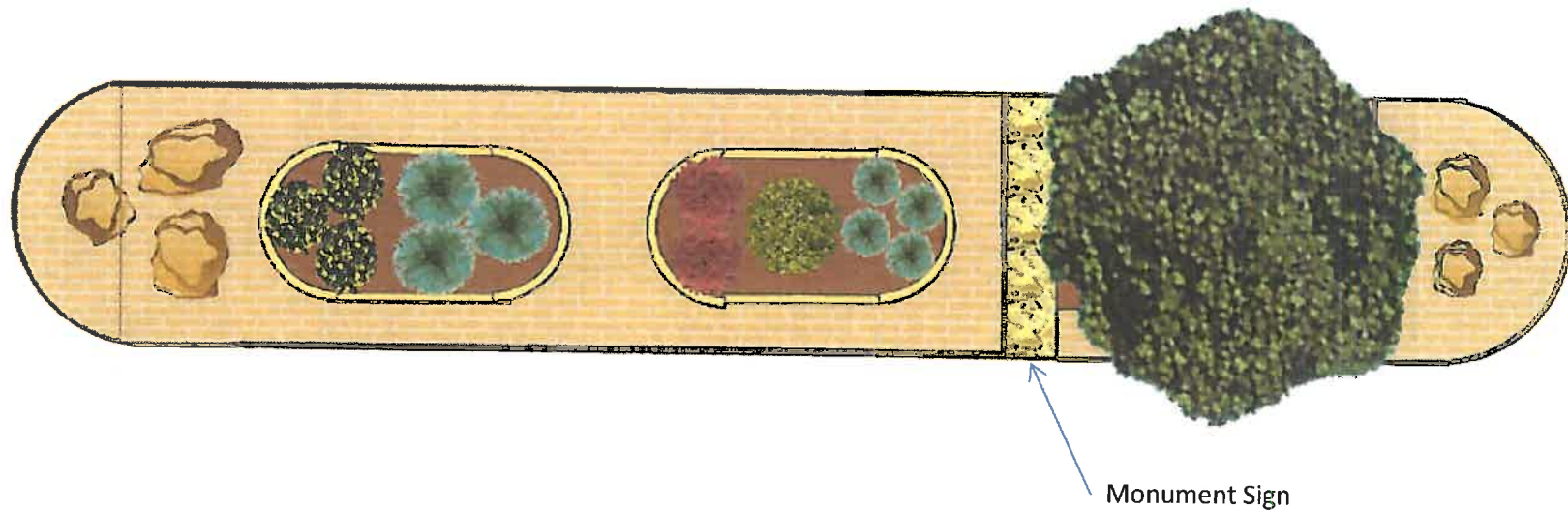
TOTAL ESTIMATE COST of all above locations: \$248,289 TO \$297,947

This estimate was included in the adopted Landscape Budget projects for FY 15/16

EAGLE PEAK EAST ENTRY

Conceptual Design

NOT TO SCALE



This median is typical of the median on Keller Ridge.

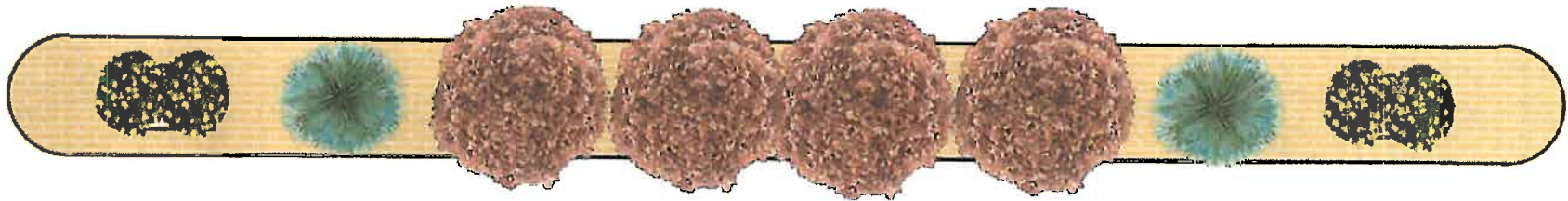
Design to include:

- Hardscape such as pavers and boulders
- Recessed planters with colored concrete banding
- Drought tolerant plantings and low flow irrigation systems
- LED lighting for monument sign and specimen tree

PEACOCK CREEK ENTRY

Conceptual design

NOT TO SCALE



Crape Myrtle Trees

This median is unique as it is very long and narrow limiting the types of designs that we can use.

Design to include:

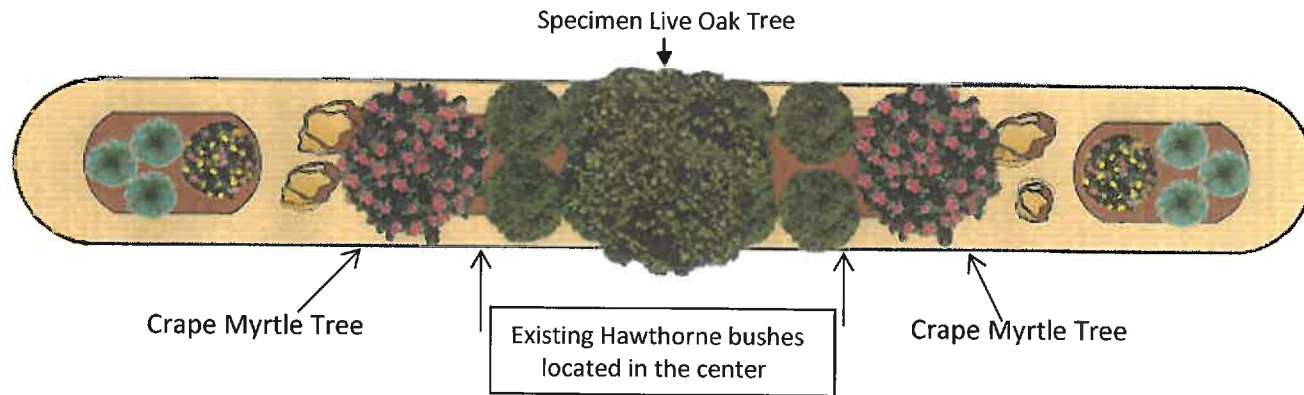
- Pavers with several small recessed planters lining the center of the median
- Drought tolerant plantings and low flow irrigation systems
- Possible LED uplighting for the linear tree arrangement will be explored.

Note: There are several existing crape myrtle trees that are located within the planter. Of these trees, 3 are in good health, but the remaining trees will need to be removed. It will have to be determined if these remaining trees can be incorporated into the final design without compromising the overall vision.

REGENCY DRIVE MEDIAN

Conceptual Design

NOT TO SCALE



This median is typical of the median on Eagle Peak East which also has established bushes.

Design to include:

- Hardscape such as pavers and boulders
- Recessed planters with colored concrete banding
- Drought tolerant plantings and low flow irrigation systems
- LED lighting for monument sign and specimen tree or trees will be explored

6. **PUBLIC COMMENT ON NON - AGENDA ITEMS**

Tamara Steiner from the *Clayton Pioneer* announced upcoming Clayton community events: Clayton Cleans Up! on April 25th; Clayton Community Library Foundation "Death and Disloyalty", a Library murder mystery play April 24th and April 25th; and Clayton Historical Society's 23rd Annual Gardens Tour April 25th and 26th.

7. **PUBLIC HEARINGS** – None.

8. **ACTION ITEMS**

- (a) Consider recommendations from the Trails and Landscaping Committee (TLC) regarding priority of proposed general improvement projects within the Citywide Landscape Maintenance District (CFD – 2007).

Maintenance Supervisor John Johnston presented the staff report indicating the preference of Option 1 from the Trails and Landscaping Committee which encumbers \$300,000.00 of Landscape Maintenance District reserve funds, noting no plantings will occur until the Governor's Severe Drought Water Restrictions are lifted. Specific landscape plans for the various subdivision entries would be internally designed by staff during this drought period, subject to review by the Trails and Landscaping Committee with final approval by City Council by June 2016. Plant designs would be drought tolerant and include use of appropriate hardscape to minimize water use and enhance ease of maintenance. In the interim staff will be moving forward with the previously-budgeted Landscape District projects to repair trail bridges and broken planter boxes in the downtown.

Mayor Shuey inquired if engineered type of products [recycled materials] will be used as the surface replacements on the seven bridges' renovation project along the trail system? Maintenance Supervisor Johnston advised at this time he is not sure if the existing structures will be able to support the additional weight of a manufactured heavier material. Staff will be exploring it further.

Councilmember Pierce advised the existing bridge structures are already in need of additional structural support and understands they may not be able to accommodate a heavier material. Mr. Johnston noted this issue and option will be deferred to the contractor who would have the expertise in this field.

Mr. Johnston continued with the staff report presentation describing the various gradations of repair and replacement that are needed on the downtown raised planter boxes on Main Street and Center Street. The Chinese Pistache tree roots need larger planter boxes, which is why the existing ones are breaking apart. The planter box on the corner of Center and Diablo Street was damaged by a vehicle; however the City recovered insurance funds to be used for repairs.

Vice Mayor Geller asked if the existing Crape Myrtle and Chinese Pistache trees could be possible reasons for the elevation of surrounding sidewalks? Mr. Johnston advised each planter box will be re-evaluated prior to the start of the renovation to see if there are other potential problems.

Councilmember Haydon inquired about any existing irrigation problems? Mr. Johnston advised a determination cannot be assessed prior to a complete evaluation which will occur on the planter boxes that are falling apart, including the irrigation system. Councilmember Haydon noted the Clayton Valley Garden Club was once hand watering the planter boxes in the downtown area.

Mr. Johnston noted the raised planter boxes on Center Street are only in need of minor repairs because they were added later and he designed them properly sized. He concluded by indicating the Trails and Landscaping Committee reviewed the Landscape District's mid-year budget and determined that, with a minimum reserve of \$200,000.00 for cash flow purposes, there are still additional monies available to take on some new landscaping projects when the drought is over.

Mayor Shuey inquired on the specific estimated cost break down on Option 1 and requested exactly what is planned to be done to the existing landscaping areas? Mr. Johnston advised each subdivision entry way will be thoroughly evaluated and if existing plants can be saved they will be. Mr. Johnston prefers Hawthorne shrubs such as those on Regency Drive as those bushes coordinate well with other plants and are low maintenance. City Manager Napper added specific designs for each entry way will be drawn; once the proposed design process is complete, it will be reviewed by the Trails and Landscaping Committee and then will come back to the City Council for final approval at a public meeting.

Vice Mayor Geller inquired on how the estimates were reached for the proposed general improvement projects within the Citywide Landscape Maintenance District? Mr. Johnston advised actual unit expenses from the recent Clayton Road median project were tripled because these entry way projects are smaller sites and include irrigation controller replacements, power for lighting; ultimately, each site will need further evaluation to refine actual improvement costs. City Manager Napper added the figures provided are guesstimates only; the proposed landscaping improvement project is still subjected to competitive bid by state law.

Vice Mayor Geller asked if the hardscape improvements could be installed and delay the landscape plants if the drought continues? Mr. Johnston advised much of his contemplated replacement design will involve hardscape; plants cannot be the main focus any longer as the State of California is in a drought, water usage needs to be reduced by 25 percent, and future water use is risky.

Vice Mayor Geller complimented Mr. Johnson on the design and finished product of the renovated medians on Clayton Road; they are beautiful.

Councilmember Haydon inquired once the reduced water usage order is lifted, would the City be able to phase in plants that need water? Mr. Johnston responded hardscape is the intended landscape with focus plants much like the project completed at the traffic signal island in front of the Clayton Fountain.

Mayor Shuey opened the item to receive public comments; no public comments were offered.

It was moved by Vice Mayor Geller, seconded by Councilmember Haydon, to approve Option 1 (subdivision entry ways) as the priority for landscape and hardscape improvement projects in the Citywide Landscape Maintenance District during calendar years 2015 and 2016. (Passed; 5-0 vote).

- (b) Consider and discuss a request by Council Member Diaz to create and design a City of Clayton flag.

Councilmember Diaz opened the discussion of a City of Clayton flag noting he was recently approached by a business colleague who would like to design a City of Clayton flag, pro bono, and he is seeking the input of the Council members if this was something of interest and discuss how to proceed.

Mayor Shuey asked if the proposal includes creation and the rights to a flag design? Councilmember Diaz confirmed the beginning process is to decide if the City Council would like to consider creating a City of Clayton flag; he further referenced a brochure was included with the staff report outlining suggested parameters in designing a flag.

Vice Mayor Geller liked the idea of having a City of Clayton flag and inquired how to proceed with the design of the City flag: by contest, create a subcommittee or just hire the Councilmember Diaz's business colleague? Councilmember Diaz advised his business colleague will design the flag pro bono and is seeking the preference of the City Council if there was anything in particular to be included in the design.

Councilmember Haydon indicated his preference is to use the existing graphic that appears on the top of City of Clayton business cards and City of Clayton stationery.

Vice Mayor Geller asked, after reading the brochure, if the finished image is reproducible for both sides of the flag?

Councilmember Pierce concurred with Councilmember Haydon, preferring the use of the existing image of the City of Clayton business cards and City of Clayton stationery.

Mayor Shuey inquired if our image of Mt. Diablo is the same perspective one would see from the city of Clayton? Councilmember Pierce added it is a true image depending on where one is standing; it was designed by a high school student back in 1964, the original drawing is still in existence and stored at the Clayton Museum, and it has been copyrighted for the exclusive use of Clayton City Hall despite being used in other products sold by some in town.



Agenda Date: 4-7-2015

Agenda Item: 8a

Approved: 

Gary A. Napper
City Manager

STAFF REPORT

TO: HONORABLE MAYOR AND COUNCILMEMBERS

**FROM: LAURA HOFFMEISTER, ASSISTANT TO THE CITY MANAGER
MAINTENANCE SUPERVISORS JANNEY AND JOHNSTON**

DATE: April 7, 2015

SUBJECT: Consider recommendations from the Trails and Landscaping Committee (TLC) regarding priority of proposed general improvement projects within the Citywide Landscape Maintenance District (CFD 2007)

RECOMMENDATION

Following City Council discussion and opportunity for public comment, by motion approve the recommendation of the Trails and Landscape Committee for staff to move forward with the development of plans for re-landscaping of subdivision entries – Option 1, and encumber \$300,000 of landscape district reserve funds [plantings will not occur until the Governor's Severe Drought Water Restrictions are lifted].

However, development of specific landscape plans for the various subdivision entries would still proceed by staff, reviewed by the TLC, and ultimately returned to the City Council with specific design plans prior to June 2016. By this timeline, improvement plans would be ready when water restrictions are hopefully lifted. Plant designs would be drought tolerant and include use of appropriate hardscape to minimize water use and enhance ease of maintenance.

BACKGROUND

The Clayton Landscape Maintenance District (CFD – 2007) over the past year has generated a sufficient reserve balance to allow the consideration off new landscaping projects to be undertaken. When the District's Budget was initially adopted (FY 2014-15), it was unknown if further capital monies would be available to undertake more improvements than the two included in the proposed Budget (Creek Pedestrian Bridge Renovation and Downtown Planter Repair/Replacement). Preliminary staff calculations expected only \$219,572 would be available for Landscape District improvements. Therefore, the adopted Budget authorized the following Landscape Maintenance District projects:

A. Creek Bridges Renovation Project (\$70,000)

All seven bridges along the creek trails system (six on Cardinet Trail and one on Easley Trail, the Bruce Lee Trail) are in need of surface replacements. Maintenance staff plans the bid specifications and documents for this trail maintenance project would be completed in mid-April; put the project out to bid end of April; award of the contract in July; and completion of construction by October 2015. That completion date is required to comply with State Fish and

Subject: Consider recommendations from the Trails and Landscaping Committee (TLC) regarding priority of proposed general improvement projects within the Citywide Landscape Maintenance District (CFD 2007)

Date: April 7, 2015

Page 2 of 4

Game and U.S. Army Corps of Engineers' restrictions about working in or near creek areas during the "rainy season" (hopefully that will be a problem in the fall of 2015). The project includes staff evaluation whether synthetic wood (recycled type product) could be used for the deck surface of the bridges.

B. Downtown Raised Planter Boxes (\$35,000)

The existing raised planter boxes in Town Center Clayton have various gradations of repair and replacement. Where possible the raised landscape planters will be enlarged. The planters on Center Street are larger than the existing older raised planters on Main Street. Existing planter box trees include the Chinese Pistache and the Crape Myrtle; these are appropriate tree species for planter boxes, although the Chinese Pistache needs the larger planter box size).

1. North side of Main Street

Five (5) raised planter boxes all need work as follows:

- ▶ Remove/replace three planters with new ones which will be 16 inches larger in diameter to allow retention of the existing Chinese Pistache trees.
- ▶ Repair cap on one planter (retain existing Crape Myrtle).
- ▶ Remove and replace one planter box near Museum at same size (cannot be enlarged due to ADA public sidewalk clearance);

2. Southside of Main Street

Seven raised planter boxes. Six (6) need improvement as follows:

- ▶ Re-mortar river rock sidings on two planter boxes (keep Crape Myrtles).
- ▶ Remove/replace three planter boxes with new ones which will be 16 inches larger in diameter to retain existing Chinese Pistache trees.
- ▶ Remove and replace one planter box at same size near The Grove Park (cannot be enlarged due to ADA public sidewalk clearance); appropriately sized landscape plants would be installed due to restricted size not suitable for tree roots.
- ▶ One planter is in good shape with an existing Crape Myrtle tree - no work needed.

3. Center Street

Planter boxes on Center Street are all much larger and only need minor repair to the caps. The planter box at the corner of Center and Diablo Streets (near Village Market) was hit by a car and the City recovered insurance funds to repair it. Its repair work will be done with the other downtown planter work.

The Downtown Raised Planter Box Maintenance Project is anticipated to occur sometime in the fall/winter of 2015 (after Oktoberfest). Staff plans to incorporate this work in its upcoming citywide sidewalks repair project to obtain better bid and unit pricings.

TLC DISCUSSION

During Mid-Year Budget Review it was determined the Landscape District's unrestricted fund balance is \$544,299. As identified during the FY budget adoption process, if the reserve funds

Subject: Consider recommendations from the Trails and Landscaping Committee (TLC) regarding priority of proposed general improvement projects within the Citywide Landscape Maintenance District (CFD 2007)

Date: April 7, 2015

Page 3 of 4

were greater than anticipated during the budget adoption, the TLC was to consider recommending use of monies for other Landscape Maintenance District renovation projects. It has been the policy and practice of the Landscape Maintenance District to retain a reserve balance of \$200,000 each year. This fiduciary practice is employed because the Clayton Landscape Maintenance District parcel tax is not collected until later in the fiscal year when property owners' tax bills are first remitted. This policy still leaves around \$345,000 that can be designated for a new landscape project within the Landscape District.

Staff put together two potential projects for the Trail and Landscape Committee (TLC) to review and consider at its last meeting on March 16, 2015. After significant discussion the TLC unanimously recommended the City Council direct moving forward with Option 1: Entry Re-Landscaping into subdivision areas. The TLC reasons for selecting Option 1 included: the projects would be spread over the community thus more equity for more areas of the community; the likely easier construction with less street lane closures than if Clayton Road median project, therefore might be faster to complete each one; the Clayton Road median is traveled at 45 mph and not all residents go by the area. The subdivision entry re-landscaping would be more noticeable and closer to the resident's actual homes.

Option 1: Entry Ways Re-Landscaping

Re-landscape the entry ways on major roads into residential subdivisions and the area by the Clayton Town Center sign. The medians are Eagle Peak Drive (2), Keller Ridge Drive, Peacock Creek Drive, Regency Drive, east Marsh Creek Road entry into City, and the Marsh Creek Road eastside frontage by town center sign. This project had been discussed in the past as a possible future project by the Trails and Landscape Committee when funds became available. Attached is a short description of the area with square footage, estimated cost, and Goggle map locations.

Option 2: Median Re-Landscaping - Clayton Road from Oakhurst to Marsh Creek Road near the Diablo View Middle School

Re-landscape the median along Clayton Road from Oakhurst Drive to Marsh Creek Road at the Diablo View Middle School. Attached is a short description of the area with square footage, estimated cost, and Goggle map location.

The estimated cost was taken from the Clayton Road Median Project that was completed in 2012. These are only estimates based on square footage costs which can become higher or lower than anticipated after actual plans and specifications are drawn and the City receives bids from the contractors.

Due to Governor Brown's Executive Order B-29-15 issued on April 1, 2015 calling for statewide water reductions of 25%, it is considered imprudent for the City to engage in planting more public landscaping, no matter how desirable or attractive, which will increase the City's water

Subject: Consider recommendations from the Trails and Landscaping Committee (TLC) regarding priority of proposed general improvement projects within the Citywide Landscape Maintenance District (CFD 2007)

Date: April 7, 2015

Page 4 of 4

needs during a severe drought statewide and while property owners within our community are faced with decreasing their own household and yard water needs. Therefore, deferring Option 1 (and Option 2) to later timetables is the obvious recommendation.

FISCAL IMPACT

During the adoption of the FY 14-15 District Budget it was projected the Landscape Maintenance District reserve would be \$219,572. At Mid-Year Budget it was determined to be \$544,299.

After accounting for the FY approved projects (Creek Trail bridge renovations and the Downtown Planter Box Repair/Replacement), \$300,000 is available for additional landscape District renovation projects. The proposal is for this amount (\$300,000) to be earmarked for the TLC's Option 1 project (Entry Ways Re-Landscaping Project). This action would leave a working equity reserve of \$200,000 for the reasons noted above.

Attachments

- 1. Landscape Maintenance District Improvement Plan Criteria [2 pp.]
- 2. Option 1 – Entry Median areas [9 pp.]
- 3. Option 2- Clayton Road Median [3 pp.]
- 4. Landscape Maintenance District FY 14-15 budget memo to City Council [1 pg.]
- 5. FY 14-15 Maintenance District mid-year status financial report [2 pp.]

Landscape projects 2015 16 ccsr

LANDSCAPE MAINTENANCE DISTRICT IMPROVEMENT PLAN CRITERIA

APPROVED BY THE TRAILS AND LANDSCAPE COMMITTEE NOV 16, 2009

Criteria:

- Areas that give the District the largest savings over the long term in reduced water usage and maintenance while enhancing the landscape, including the use of hardscape in key appropriate areas to minimize planting area
- Plant Replacement caused by drought only in areas where no overriding factor has been detected i.e. substandard irrigation, wrong type of plants, substandard soil, or mass loss of plant life before drought. (see below)

Using the above criteria the maintenance staff has provided a partial list of areas that should be considered for improvement and the general type of changes:

First step would be to improve the following areas:

Water Feature

Replace turf area with a smaller lawn in front of the fountain and plant trees and shrubs on outside areas along fence lines (concept plan to be provided at the meeting) **COMPLETED**

Oakhurst Drive median noses

Hardscape the narrow median noses along Oakhurst Drive removing remaining shrubs (seven narrow noses and three wider noses) **COMPLETED**

Entry Medians and sides

Re-landscape entry medians to the following areas Eagle Peak, Indian Wells, Indian Head, Keller Ridge, and Peacock Creek with a standard plan and low maintenance design.

City Entries

Re-Landscape entry sign areas into the City with a standard plan and low maintenance design

Peacock Drive Median

Hardscape the median keeping only the existing trees.

Second step would be to establish a replanting program in the following order:

Trees Citywide

Continue to replace street trees as they die out this include the trees in the medians and along City streets.

Clayton Greens Lawns

Replace with shrubs or lawns

Third step Fill in landscape areas that have already been upgraded been upgraded within the Landscape District using only shrubs or trees.

Old Marsh Creek Rd
Oakhurst Drive Southside
Center Street Trail

Fourth step Fill in older landscape areas of the Landscape District that have adequate or need minimal irrigation upgrades and using only shrubs and trees

Clayton Road from City limits to Mitchell Canyon
Clayton Rd from Oakhurst to Mitchell Cyn (note this area was redone with new irrigation and planting plan along with Daffodil Hill --Daffodil Hill joint funded project with CBCA) **COMPLETED**
Clayton Road from horse trail along sound wall on Marsh Creek Road

Fifth step and Long term goals for the Landscape District

Upgrade irrigation where the systems are substandard

Centralize the irrigation system district wide

Planting plans for the following areas

Eagle Peak Drive
City wide medians
Keller Ridge Drive
Regency Meadows
Clayton Greens

**LANDSCAPE PROJECT
OPTION 1 - Subdivision ENTRYS**

Eagle Peak Drive and Oakhurst Drive (south)

AERA: 215x15 feet - 3230sqft.

IRRIGATION: Has one station that runs the complete median needs to be upgraded

CONTROLLER: Needs and upgrade to smart controller to meet water conversation ordinance

POWER: No

ESTIMATED COST TO LANDSCAPE:**\$52,837**

Keller Ridge Drive and Eagle Peak Drive

AREA: 100 x 10 feet – 1000sqft.

IRRIGATION: Has one station that runs the complete median needs to be upgraded

CONTROLLER: Needs and upgrade to smart controller to meet water conversation ordinance

POWER: Yes also entry sign on median

ESTIMATED COST TO LANDSCAPE:**\$22,620**

Eagle Peak Drive and Oakhurst Drive (north)

AREA: 55 x 10 feet – 550sqft.

IRRIGATION: Hook up to both sides of entry all would need upgrading

CONTROLLER: Needs and upgrade to smart controller to meet water conversation ordinance

POWER: Yes also entry sign on median

ESTIMATED COST TO LANDSCAPE:**\$12,818**

Peacock Creek Drive at Clayton Road first median

AREA: 150 x 8 feet – 1200sqft

IRRIGATION: Has one station that runs the complete median needs upgrading

CONTROLLER: Needs an upgrade to smart controller to meet water conversation ordinance

POWER: No

ESTIMATED TO LANDSCAPE:**\$25,644**

Regency Drive at Marsh Creek Road

AREA: 250 x 10 feet – 2500sqft

IRRIGATION: No – needs whole system installed; mains, valves, laterals (may need new meter)

CONTROLLER: None (may need to be added) or new smart controller installed in existing landscape

POWER: No

ESTIAMATED TO LANDSCAPE:\$37,950

Marsh Creek Road at Diablo Parkway

AREA: 60 x 12 feet – 720sqft. (east side) 40 x 12 feet – 480sqft (west side)

IRRIGATION: No - needs whole system installed; mains, valves, laterals

CONTROLLER: No needs a smart controller to meet water conversation ordinance

POWER: No

ESTIMATE TO LANDSCAPE:\$48,944

Marsh Creek Road east side from Town Center Sign to Center Street

AREA: Clayton Road to Corral – 330 x 8 feet – 2640sqft. Corral to Center Street 110 x 5 – 500sqft.

IRRIGATION: Multiple systems needed to be upgraded

CONTROLLER: Yes smart controllers installed

POWER: Yes

ESTIMATE TO LANDSCAPE:\$47,476

TOTAL ESTIMATE COST OF ALL ENTRY'S: \$248,289 TO \$297,947

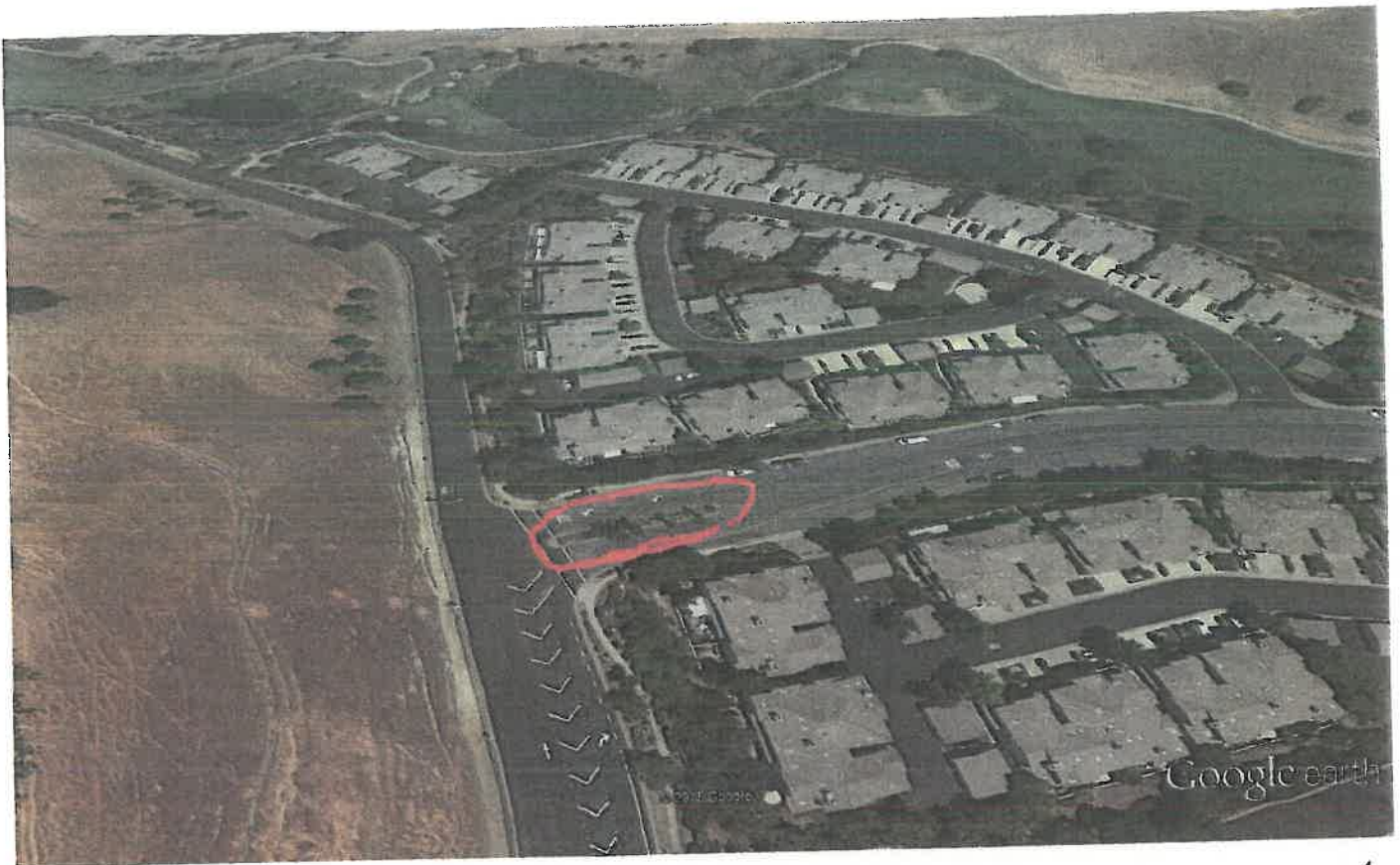
The Median Entry's would be landscaped in a more formal appearance using hard scape, lighting, and shrubs. This would be like the landscaping installed on Clayton Road in the Median from Heritage Trail to Oakhurst Drive. Costs are only estimated using construct costs from the Clayton Road project in 2012 as a guide.



Google earth



Eagle Peak and Oakhurst Drive (south) option 1



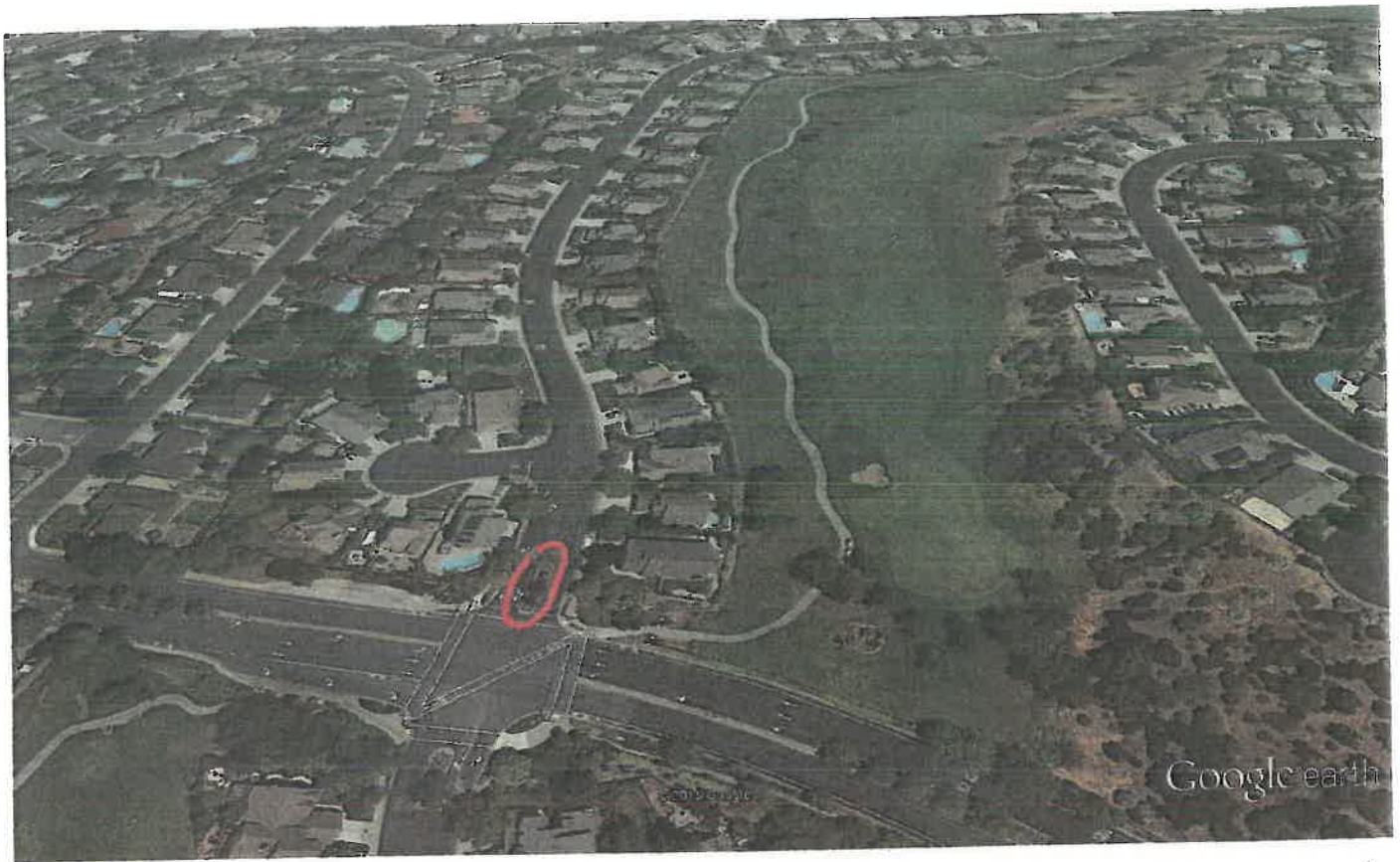
Google earth

feet
meters



Keller Ridge Drive

option 1



Google earth



Eagle Peak Drive and Oakhurst Drive (North) Option 1



Google earth

feet
meters



Pearock Creek Drive at Clayton Rd

Option 1



Google earth



Regency Drive at Marsh Creek Road option 1

Note: Oak Creek Canyon
Subdivision required to
landscape medians on Marsh



Entry on Diablo Parkway - Option 1.
Marsh Creek Road



Google earth



Marsh Creek Road (east side) Option 1
Town Center Sign

Agenda Date: Jan. 11, 2016

Agenda Item: 6a

-----Original Message-----

From: Candace Bass <kndbass@aol.com>
To: HGeller617 <HGeller617@aol.com>
Cc: gnapper <gnapper@ci.clayton.ca.us>
Sent: Tue, Jul 28, 2015 5:57 pm
Subject: Cardinet Trail: Trail Safety, Fire Prevention

Howard,

Thank you for returning my call the other day. Here is what has prompted me to contact you: Last Wednesday morning, while walking the Cardinet Trail, I came across a fellow sitting on one of the benches who was casually smoking marijuana and asking walkers for money.

While some of the walkers were obviously put off by his begging, my immediate concern was actually the fire risk that his smoking posed. Having served on the fire services committee, one of the things that we learned is that the firefighter's task becomes quite complicated when s/he needs to reach a rural destination, such as a trail.

As soon as I was able, I alerted the Clayton P.D.

At the last CBCA meeting, I described the incident to Officer Enea who was in attendance. He complimented me for contacting the police. I referred back to a similar incident that occurred last year on the trail. A young man was riding a bicycle and also smoking a cigarette. I informed him that it is illegal to smoke on the trail. Most folks will immediately extinguish their cigarette when they hear this. Instead, this fellow became belligerent and continued to smoke and ride his bike. I contacted the Clayton P.D.; dispatch assigned Officer Pike who searched for this man.

I mention this previous event because of the similarity to the encounter that I had last Wednesday. I relayed that info to Officer Enea who said he would follow up with Officer Pike.

It has become clear to me within the last year or so that many trail users are totally uninformed of the smoking ordinance. A few years ago, I collaborated with several others (former Community Services Director, David Woltering former Chief of Police Dan Lawrence, former Clayton resident Barbara Wall, Landscape Maintenance Supervisors John Johnston and Mark Janney) to create a no smoking sign. (see attachment) Serving as a template, it was posted in front of a Pebble Beach Drive open space to alert the public. Eventually, it was also posted at two other open space locations in town. (Please see additional photo attachment of Lydia Lane Park's sign . Please note that there is no mention of the no smoking ordinance or the associated fine on the park sign.)

I'd like to suggest that TLC make fire prevention a higher priority. One way to demonstrate this priority would be **for TLC to consider allocating funds from the landscape district to purchase and post the same no smoking sign at all of the trail heads along the Cardinet Trail. (Other trails could be considered, as well.)**

As you know, I have worn many hats over the years. As a former fire services committee member, TLC chair, and TLC outreach chair I strongly feel that it is in Clayton's best interest to address this aspect of trail safety. Informing the public about fire safety and prevention along the trail system should begin as soon as possible.

Thank you Howard, for your consideration and for the good work that you do.

Sincerely,

Candace Bass
Clayton resident



! DANGER



- NO SMOKING
- NO MATCHES
- NO OPEN FLAMES

VIOLATORS MAY BE FINED PER
C.M.C. SEC 8.14.0500M C.M.C. SEC 1.20.010

WELCOME TO LYDIA LANE PARK

In order to keep the park safe, and enjoyable please observe the following rules.

- Park hours are from dawn to dusk.
- Dogs must be on a leash.
- No horses off trail.
- No alcoholic beverages without City permit.
- No Golf playing.
- No bicycle riding on grass or landscape areas.
- Park in designated areas.

Please pick up your own trash
Thanks for your cooperation!
City of Clayton
Park Information 672-3622
Emergencies call 911
CMC 11.04



- M. "Bowlers' settee" means the area immediately behind the bowling lane in which score is kept and seating is provided for bowlers waiting their turn to bowl;
 - N. "Visitors' settee" means seating provided immediately behind the bowlers' settee;
 - O. "Bowling center concourse" means that area separated from the bowling lane, bowlers' settee, and visitors' settee by at least one step or a physical barrier.
 - P. "Park" means all public open spaces, recreation areas and trails owned and maintained by the City of Clayton, whose primary purpose is recreation, either passive or active.
 - Q. "Trail" means a marked or established path or route, paved or unpaved, used for the recreational activities of walking, hiking, bicycling, and/or horseback riding.
 - R. "Open Space" means land left basically in its natural, undeveloped state to promote scenic and aesthetic beauty and used for the preservation of natural resources, managed production of resources and outdoor recreation.
- (Ord. 295, Sec. 1, 1992, Ord. 307, 1993.)

8.14.040 Regulation of smoking in city-owned facilities. Smoking is prohibited in all buildings, vehicles, or other areas occupied by city employees, owned or leased by the city, or otherwise operated by the city. (Ord. 295, Sec. 1, 1992, Ord. 307, 1993)

8.14.050 Prohibition of smoking. Smoking is prohibited in the following places within the city of Clayton:

- A. All enclosed areas available to and customarily used by the general public and all businesses patronized by the public, including, but not limited to, retail stores, the common areas of hotels and motels, pharmacies, banks, shopping malls, and other offices;
- B. All indoor areas of restaurants, including but not limited to indoor dining areas, waiting areas, restrooms, offices, break rooms, food preparation areas, and bar areas. The owner, manager or operator of the restaurant shall post signs as prescribed by Section 8.14.080(A) and remove all ashtrays from tables. Smoking is permitted in any outdoor areas of restaurants, and also in the bar and dining indoor areas of restaurants after the consumption of all meals therein has ceased.
- C. Waiting rooms, hallways, wards, and semi-private rooms of health facilities, including, but not limited to, hospitals, clinics, physical therapy facilities, doctors' offices, except that health facilities shall also be subject to the provisions of Section 8.14.060 regulating smoking in places of employment;
- D. Elevators, public rest rooms, indoor services lines, buses, taxicabs and other means of public transit under the authority of public entities, and in ticket, boarding, and waiting areas of public transit depot; provided, however, that this prohibition does not prevent the establishment of separate waiting areas for smokers and non-smokers, provided that at least sixty percent of a given waiting area shall be designated as a non-smoking area.
- E. In public area of museums and galleries;
- F. Theaters, auditoriums, concert facilities and halls which are used for motion pictures, stage dramas and musical performances, ballets or other exhibitions, both indoor and outdoor, except when smoking is part of any such production, provided however, in outdoor facilities, designated smoking areas may be provided which shall be segregated from non-smoking areas. Where seating area is provided in an outdoor facility, no more than 40% of the total seats of the facility may be designated as smoking seats;
- G. Retail food marketing establishments, including grocery stores, and supermarkets;

H. Public schools and other public facilities under the control of another public agency, which are available to and customarily used by the general public, to the extent that the same are subject to the jurisdiction of the city;

I. Sports facilities, both indoor and outdoor, and convention halls.

J. Bowling centers, including but not limited to bowling lanes, bowlers' settees, visitors' settees and game rooms, provided however, that a designated smoking area may be provided on the bowling center concourse. The owner, manager or operator of the bowling center shall post signs as prescribed by Section 8.14.080(1) and remove all ashtrays from non-smoking areas;

K. Private residences when used as child care or health care facilities. Board and care facilities shall provide smoke-free living quarters for non-smoking boarders;

L. Bingo parlors, except a separate enclosed room may be designated as a smoking room. The owner, manager or operator of the bingo parlor shall post signs as prescribed by Section 8.14.080 and remove all ashtrays from the non-smoking room.

M. Parks, Trails, and Open Space.

Notwithstanding any other provision of this section, any owner, operator, manager or other person who controls any establishment described in this section may declare that entire establishment as a non-smoking establishment. (Ord. 295, Sec. 1, 1992, Ord. 307, 1993)

8.14.060 Regulation of smoking in places of employment.

A. Smoking is prohibited in any place of employment, including, but not limited to, open office areas, shared offices and private offices occupied by employees performing clerical, technical, administrative or other business or work functions; and, conference and meeting rooms, classrooms, auditoriums, rest rooms, medical facilities, hallways, and elevators.

B. The provisions of this division shall be communicated to all employees within three weeks of its adoption, and at least annually thereafter. (Ord. 295, Sec. 1, 1992)

8.14.070 Optional smoking areas. Notwithstanding any other provisions of this division to the contrary, the following areas shall not be subject to the smoking restrictions of this division:

A. A private residence, including one which may serve as a place of employment, except when covered by Section 8.14.030(H);

B. Bars, except as provided otherwise in this division;

C. Licensed cardrooms;

D. Hotel and motel rooms rented to guests, provided however, that each hotel and motel designates not less than 30% of their guest rooms as non-smoking rooms and removes ashtrays from these rooms;

E. Rooms in restaurants, hotel and motel conference or meeting rooms and public and private assembly rooms while these rooms are being used for private functions;

F. Retail stores that deal exclusively in the sale of tobacco and smoking paraphernalia;

G. In places of employment, employers may provide specific smoking areas for employees provided all of the following conditions are met:

Chapter 1.20

GENERAL PENALTY

Sections:

1.20.010

Penalty for Violations- Infractions and Misdemeanors

1.20.010 Penalty for Violations - Infractions and Misdemeanors.

A. Any person committing, continuing, or permitting a violation of any provision of or failing to comply with any of the mandatory requirements of the ordinances of the City of Clayton is guilty of an infraction, unless the violation is declared a misdemeanor by ordinance or statute. Unless otherwise provided by State law, however, any violation of any ordinance of the City of Clayton may, at the discretion of the City Manager or direction of the City Council, be prosecuted either as an infraction or as a misdemeanor.

B. In the event that any provision of State law requires that a person be given notice of a violation of said ordinance(s), a person is not guilty unless the violation exists after the expiration of the applicable notice period.

C. Except in cases where a different punishment is prescribed by ordinance, any person convicted of an infraction for violation of an ordinance of the City of Clayton is punishable pursuant to California Government Code Section 36900 by the following:

1. A fine not exceeding one hundred dollars (\$100) for a first violation.

2. A fine not exceeding two hundred dollars (\$200) for a second violation of the same ordinance within one year.

3. A fine not exceeding five hundred dollars (\$500) for each additional violation of the same ordinance within one year.

D. An offense which would otherwise be an infraction is a misdemeanor if a defendant has been convicted of three (3) or more violations of the same ordinance within the twelve (12) month period preceding the commission of the offense. For this purpose, payment of fine (bail forfeiture) shall be considered to be a conviction of the offense charged.

E. Any person convicted of a misdemeanor for violation of an ordinance of the City, is punishable by a fine of not more than one thousand dollars (\$1,000), or by imprisonment in the county jail for a period not to exceed six (6) months, or by both such fine and imprisonment.

F. A person may be guilty of a separate offense for each and every day during any portion of which any violation of any provision of the ordinances of the City is committed, continued, or permitted by any such person.

G. In the event the City brings a civil or criminal action to enforce the provisions of this code or to abate a public nuisance under the California Civil or Penal Code provisions, the City shall, if it is the prevailing party, be entitled to an award of reasonable attorney's fees and costs. (Ord. 319, 1995)

H. If any fine or penalty imposed for the violation of any provision of this Code remains unpaid in whole or in part after thirty (30) days following its imposition, interest shall accrue on the unpaid amount calculated at the highest permissible rate under the law. This interest shall be in addition to any late payment charges set forth in the Clayton Master Fee Schedule. (Ord. 413, 2008).

COMMITTEE ROSTER
TRAILS AND LANDSCAPING COMMITTEE

Rev. 1/7/2016

Laura/TLCRoster2015

Larry Casagrande (Chair)
239 Jeffry Ranch Place
Clayton, CA 94517
(925) 693-0073
email: Lcasagrande@chevron.com
(term: Dec. 2013 – December 2015) will continue to new appointments of Jan 19

Anthony Chippero
1713 Indian Wells Way
Clayton, CA 94517
(925) 234-6417 (business); (415) 839-8793
email: ajchippero@comcast.net
(term: June 2013 - December 2015) reapplied

~~Robert Erich
1044 Pebble Beach Drive
Clayton, CA 94517
(925) 946-0371 (wk); (925) 673-0544 (alt/hm #)
email: erichlaw@me.com
(term: December 2013- December 2015)~~

Christopher Garcia
203 Mt. Wilson Place
Clayton, CA 94517
(925) 304-2144 (hm); (805) 748-4974 (wk)
email: Christopher@OutcastWines.com
chrislgarcia@hotmail.com
(term: December 2014- December 2016)

~~Howard Glazier
6021 Golden Eagle Way
Clayton, CA 94517
(925) 899-3314 (cell primary ph#)
Email: howardglazier44@comcast.net
(term: Dec. 2013- December 2015)~~

~~Harun Simbirdi
1353 El Camino Drive
Clayton, CA 94517
(925) 338-6075
email: simbirdi@yahoo.com
(term: June 2013 – December 2015)~~

Alyse Smith
601 Condor Place
Clayton, CA 94517
(c) (925)993-8583
email: alysej@comcast.net
(term: Dec. 2013- December 2015) will reapply

Clayton Smith (Vice Chair)
8 Long Creek Circle
Clayton, CA 94517
(925) 672-2529; (business): (925) 473-7792
email: clayton@alum.calberkeley.org or
csmith94517@comcast.net
(term: Dec. 2014 - December 2016)

Bob Steiner
4701 Morgan Territory Road
Clayton CA 94517
business: (925) 672-5854; (c) 925-787-1153
email: rws32@earthlink.com
(term: Dec. 2014 - December 2016)

CITY PERSONNEL

City of Clayton Main Office number 673-7300

Gary Napper, City Manager
6000 Heritage Trail
Clayton, CA 94517
(925) 673-7300
email: gnapper@ci.clayton.ca.us

Jim Diaz, Vice Mayor (Liaison)
10 Eagle Peak Pl.
Clayton, CA 94517
(925) 672-0535
Email: jdiaz@ci.clayton.ca.us

Laura Hoffmeister, Assistant to the City Manager
6000 Heritage Trail
Clayton, CA 94517
(925) 673-7308; (925) 250-8532 (cell)
email: Lhoffmeister@ci.clayton.ca.us

Keith Haydon, Councilmember (Alternate Liaison)
1542 O'Hara Ct.
Clayton, CA 94517
(925) 672- 8262; (925) 858-1887 (cell)
email: khaydon@ci.clayton.ca.us

Mark Janney, Maintenance Supervisor
6000 Heritage Trail
Clayton, CA 94517
(925) 673-7327; (925) 250-5803 (cell)
email: mjanney@ci.clayton.ca.us

John Johnston, Maintenance Supervisor
6000 Heritage Trail
Clayton, CA 94517
(925) 673-7326; (925) 250-5804 (cell)
jjohnston@ci.clayton.ca.us

Janet Brown, City Clerk
6000 Heritage Trail
Clayton, CA 94517
(925) 673-7304
email: jbrown@ci.clayton.ca.us



Help clean Clayton's trails and parks. Individuals, homeowner associations, neighborhood groups, service clubs... anyone is welcome!

Cleanup Day Volunteer



Saturday April 23, 2016

from 9 a.m. - Noon. Rain or shine. Meet at Clayton City Hall, 6000 Heritage Trail.

Free barbecue.

For more information, call 672-0500.



February 14 – 39th Annual **Camellia Tea**, Clayton Historical Society, 6101 Main Street, 1pm to 4pm. Coffee, tea, and treats

A great opportunity to tour the Museum decorated in the season's bloom of camellias. For more information call Mary Spryer 672-7232 or www.claytonhistory.org.

February 28 – 16th Annual **Chili Cook Off** – Clayton Club Saloon, 6096 Main Street, 10am – 4pm; judging noon-1pm. Prizes- awards for top three of 20 entries. Entry forms at Clayton Club. For info www.claytonclubsaloon.com; email at steve@claytonclubsaloon.com; (925) 998-0549.

March 12th – **Library 21st Birthday Recognition Program** – Annual Library Birthday recognition, Foundation meeting and volunteer recognition Clayton Library Hoyer Hall 10 am to 11 am. For more info contact Joyce Atkinson at 672-3850.

April 1, 2 and 3 -- **Annual Clayton Library Birthday Celebration and Creekside Arts Celebration**

Friday 6pm-8:30pm; Saturday 10am- 6pm; Sunday Noon-5pm – Clayton Community Library 6125 Clayton Road; for info call Arlene Nielson 673-9777 or email at akixsen@aol.com

April 1 through 31 – **April on the Mountain** – various hikes and nature activities within Mt. Diablo State Park and nearby regional park areas. For information call 673-2891 or 972-7222.

April 8th – 10th ; 14th -17th ; 21st -23rd - Clayton Theatre Company presents Rumors a classic Broadway comedy stage play by Neil Simon at Endeavor Hall 6008 Center Street, Clayton CA 94517 www.BrownPaperTickets.com For more information or Roxanne Pardi at 698-1886 tickets available www.claytontheatrecompany.com

April 15, 16, 17 – **Spring Book Sale**. The Semi Annual Library Foundation pre owned Book Sale @ Clayton Library – Hoyer Hall Community Room, 6125 Clayton Rd. Fri. 4-7 CCLF members only- memberships can be purchased at the door; general public--Sat. 10-6; Sun. Noon-4; information call 672-3672 www.claytonlibrary.org

April 23 and 24 (tentative) – **Annual Gardens Tour** 10am – 4pm Rain or Shine various homes in the Clayton Valley area, Information - call Clayton Historical Society at (925) 672-0240 or www.claytonhistory.org

April 23 – Spring **Clayton Cleans Up** - Rain or shine, 9 am to Noon. Meet at City Hall Courtyard, 6000 Heritage Trail, for Information - call Pamela at Clayton Pioneer at 672-0500 or email: pamela@claytonpioneer.com.

April 27 – **Annual Spaghetti Feed** – 5pm – 8pm at Endeavor Hall, 6008 Center Street, Downtown Clayton, AAUW American Association of University Women for information contact Joan Chesterman at 672-7815 or email: JChesterman@astound.net

April 30 – 21st Annual **Devil Mountain Double Century Bicycle Ride**- starts and ends in San Ramon-- Pine Hollow Rd, Mt Zion to Clayton Rd, continue as it becomes Marsh Creek Rd, 7:30am- 9:30am for info contact Scott Halversen (510)-882-6727, email: syh_cpa@pacbell.net or www.quackcyclists.com

April 30th and May 1st -- Annual **Art and Wine Festival** Sat: 10am – 7:00 p.m.; Sun: 10am – 5pm, Main Street downtown Clayton. Art, Crafts, Food, Music, Kiddieland. Information - Call CBCA at 672-2272; or www.claytoncbca.org

May 7 – **Annual Plant Sale**, Clayton Valley Garden Club, Rain or shine. Endeavor Hall Parking Lot 8 am-1pm. Call Rory Richmond at (925) 864-8687 for information; email: rrichmond509@comcast.net or www.claytonvalleygardenclub.org

May 7 -- Sat Night **Concerts in the Grove** kick off 6pm – 8:30pm – Grove Park Gazebo Downtown Clayton --Main Street-- “**Band TBA**” music style of band goes here . www.websiteofbandgoeshere for more info.

May TBD possibly 7 or 14 – **Clayton Valley Charter High School – Bands/Music March – A – Thon**. 9am to noon- Downtown, to Library, Easley Drive, Stranahan Circle and Grove Park. For info contact Venus Suasin at vsuasin@comcast.net

May 7 or 14 through September 27 – **Clayton Farmers Market** Saturday's 8am-Noon – Downtown Clayton on Diablo Street (between Main and Center Streets). For more information contact Pacific Coast Farmers Market at www.pcfma.com or call 1-800-949-3276 (no market on September 3).

May 21 -- Sat Night **Concerts in the Grove** -- 6pm – 8:30 pm Grove Park Gazebo Downtown Clayton --Main Street - “**Band TBA**” music style of band goes here . www.websiteofbandgoeshere for more info.

May 30 – **Annual Memorial Day Program** by the VFW Post 1525, 10am Downtown Clayton Flagpole, Main and Oak Streets. Information call Paul Carroll at 628-9508 or paulcarroll@sbcglobal.net.

June 4 – Sat Night **Concerts in the Grove** – 6pm – 8:30 pm Grove Park Gazebo Downtown Clayton --Main Street the “**Band TBA**” music style of band goes here . [www.website of band goes here](#) for more info.

June 6 – Annual Clayton Business and Community Association 30th Annual **Golf Tournament**, - Oakhurst Golf Course; noon shotgun start, dinner afterwards. Contact CBCA at 672-2272 or [www.claytoncbca.org](#)

June 8 or 9 – tentative Wed or Thurs. Night **Grove Concert** – 7pm - 8:30 pm pm Grove Park Gazebo Downtown Clayton --Main Street - **name of band here** . [www.website here.com](#)

June 18 – Sat Night **Concerts in the Grove** – 6pm – 8:30 pm Grove Park Gazebo Downtown Clayton --Main Street “**Band TBA**” music style of band goes here . [www.website of band goes here](#) for more info.

June 22 or 23 – tentative Wed or Thurs. Night **Grove Concert** – 7pm - 8:30 pm pm Grove Park Gazebo Downtown Clayton --Main Street - **name of band here** . [www.website here.com](#)

July 2 – Sat. Night **Concerts in the Grove** – 6pm – 8:30 pm Grove Park Gazebo Downtown Clayton - Main Street “**Band TBA**” music style of band goes here . [www.website of band goes here](#) for more info.

July TBD - Clayton Youth Theatre Camp presents scenes from: “_____” at Endeavor Hall 6008 Center Street, show times at 1:00 pm & 3:00 pm. - for more information [www.claytontheatrecompany.com](#) or Roxanne Pardi at 698-1886

July 4 – Annual **Pancake Breakfast & Parade**– Downtown Clayton, Pancakes at Endeavor Hall(6008 Center Street) at 7am Clayton Valley Sunrise Rotary, \$5 adults and \$3 kids 12 and under; parade on Main Street 10 am, for info: Sandy Johnson at 693-0463 or main parade application at [www.cityofclayton.org](#) (no parade application needed for kiddie parade – just line up on Oak street near between Main and Center Street that morning)

July 1 tentative - Friday Night Family Movies – “movie TBD outdoor movies and social in the parking lot next to the Clayton Community Church offices, 8pm-10pm, 6055 Main Street downtown Clayton, for information call 673-9060. [www.claytoncc.com](#)

July 6 or 7 – tentative Wed or Thurs. Night **Concert in the Grove** – 7pm - 8:30 pm pm Grove Park Gazebo Downtown Clayton --Main Street “**Band TBD**” type of music here . [www.band web site here.com](#) for more info.

July 8 - Friday Night Family Movies – “Movie TBD” outdoor movies and social in the parking lot next to the Clayton Community Church offices, 8pm-10pm, 6055 Main Street downtown Clayton, for information call 673-9060 [www.claytoncc.com](#)

July 16 – Sat Night **Concerts in the Grove** - 6pm to 8:30 pm Grove Park Gazebo Downtown Clayton --Main Street – “**Band TBD**” type of music here . [www.band web site here.com](#) for more info.

July 15 - Friday Night Family Movies – “movie TBD” outdoor movies and social in the parking lot next to the Clayton Community Church offices, 8pm-10pm, 6055 Main Street downtown Clayton, for information call 673-9060. [www.claytoncc.com](#)

July 20 or 21 – tentative Wed or Thurs. Night **Concert in the Grove** – 7pm - 8:30 pm pm Grove Park Gazebo Downtown Clayton --Main Street “**Band TBD**” type of music here . [www.band web site here.com](#) for more info.

July 22 - Friday Night Family Movies – “movie TBD” outdoor movies and social in the parking lot next to the Clayton Community Church offices, 8pm-10pm, 6055 Main Street downtown Clayton, for information call 673-9060. [www.claytoncc.com](#)

July 29 - Friday Night Family Movies – “movie TBD” outdoor movies and social in the parking lot next to the Clayton Community Church offices, 8pm-10pm, 6055 Main Street downtown Clayton, for information call 673-9060. [www.claytoncc.com](#)

July 30 – Sat. Night **Concert in the Grove** – 6pm - 8:30 pm pm Grove Park Gazebo Downtown Clayton --Main Street “**Band TBD**”, type of music here. [www.band web site here.com](#) for more info.

August 13 – Sat Night **Concerts in the Grove** – 6pm – 8:30 pm Grove Park Gazebo Downtown Clayton--Main Street – “**Band TBD**” type of music here . [www.band web site here.com](#) for more info.

August 3 or 4 tentative– Wed or Thurs Night **Grove Concert** – 7:00 pm – 8:30 pm Grove Park Gazebo Downtown Clayton--Main Street **Band TBD**” type of music here . [www.band web site here.com](#) for more info

August 6 - Seventh Annual Rib Cook-Off 10 am – 6pm; CBCA Annual Rib Cook Off downtown Clayton Main Street – for more info contact Rory Richmond at [rrichomond509@comcast.net](#) or [www.claytoncbca.org](#)

August 20 (tentative) – Relay For Life – American Cancer Society – location to be determined, contact Lindsay.Davis@cancer.org or at (925) 788-0064 or relayforlife.org/California.

August 27 – Sat. Night **Concerts in the Grove** 6pm to 8:30 pm Grove Park Gazebo Downtown Clayton --Main Street “**Band TBD**” type of music here . [www.band web site here.com](http://www.bandweb.site/here.com) for more info.

August 17 or 18 tentative – Wed or Thurs Night **Grove Concert** – 6:30-8:30 pm Grove Park Gazebo Downtown Clayton --Main Street “**Band TBD**” type of music here . [www.band web site here.com](http://www.bandweb.site/here.com) for more info

September 3 – **Eleventh Annual Soap Box Derby and Classic Car Show** 9 am – 3 pm, Main Street Downtown Clayton. For information call Clayton Community Church (925) 673-9060.

September 11 (tentative) -- 9/11 Remembrance (15 years) 7pm at Station 11 Firehouse lawn – corner of Center and Clayton Rd. bell ringing memorial commemoration

September 10 – **Concerts in the Grove** -- last concert of the summer 6pm – 8:30 pm Grove Park Gazebo Downtown Clayton -- Main Street – “**Band TBD**” type of music here . [www.band web site here.com](http://www.bandweb.site/here.com) for more info.

September/October Wednesday TBD — Clayton Valley Charter High School **Homecoming Parade** —4-6pm, Main Street, call Ms. Ljepava, 682-7474 for information.

Sept 30, Oct. 1 & 2 – **Oktoberfest kids Carnival** – Main/Oak St. CC Church offices parking lot & field Friday Sept 30th 5pm-10pm

Sat Oct 1, 11am-10pm; Sunday Oct 2, 11 am to 9 pm Information - Call CBCA at 672-2272; or www.claytonoktoberfest.com

October 1st & 2nd – **Oktoberfest** Sat: 11am - 8pm; Sun: 10 - 6pm; Main Street Downtown Clayton. Art, Crafts, Food and kids Carnival rides. Information - Call CBCA at 672-2272; or www.claytonoktoberfest.com

Oct. tentative – Clayton Theatre Company presents You’re a Good Man Charlie Brown, a musical comedy based on the characters created by Charles Shultz in his Peanuts comic strip at Endeavor Hall 6008 Center Street, Clayton CA 94517– tickets at www.BrownPaperTickets.com For more information Roxanne Pardi at 698-1886 or www.claytontheatrecompany.com.

October 14, 15, 16 – **Fall Book Sale**. Semi Annual Library Foundation pre owned Book Sale @ Clayton Library- Hoyer Hall Community Room, 6125 Clayton Rd. (Fri. 4-7 CCLF members only- memberships can be purchased at the door; general public --Sat. 10-6; Sun. Noon-4) information call 672-3672. www.claytonlibrary.org

December 3 -- **Annual Caroling and Tree Lighting**. Rain or Shine --Downtown Clayton, Grove Park to Main and Oak Streets,- Carriage Rides 4:30-6:30; Caroling 6pm; Tree Lighting 6:30 pm . Information Call CBCA at 672-2272.

December TBD – Annual **Hospice Tree Lighting** @ Concord John Muir Hospital Parking Lot, Almond /East Street 5:30 pm., for info contact at 925-887-5678 or at [www.hospiceeast bay.org](http://www.hospiceeastbay.org)

December 10 -- **Annual Christmas Tea with Mrs. Claus and Santa** 11 am – 2 pm, Endeavor Hall, 6008 Center Street - Call CBCA at 672-2272.

December 10 (tentative) – **Annual Holiday Toy Collection** Clayton Valley Charter High School Lacrosse Team – new toy donations being accepted 10 am to 2pm, at the Grove Park Gazebo, downtown Clayton – for info contact Tracy Morse, CVHS Men’s Lacrosse Team Rep, Tel: 925-207-0382; email: traceylmorse@gmail.com more info at www.cvlacrosse.com.

December 11 (tentative) – **Annual Holiday Home Tour** Noon - 7pm Various homes in the Clayton Valley area, Information – call Clayton Historical Society at (925) 672-0240 or www.claytonhistory.org.

Other events, activities, and local organizations

Clayton Community Gym and Recreation: All year

Various activities for youth and adults including basketball and volleyball through a management partnership with the All Out Sports League (AOSL). Gym rental available for kids parties and events too. Contact the Clayton Community Gym located at Diablo View Middle School call (925) 203-5626; www.alloutsportsleague.com

Clayton Community Library various programs and activities: 6125 Clayton Road; www.claytonlibrary.org; or call 673-0659.

Clayton Museum various history exhibits 6101 Main Street (Joel Clayton Home)

-- Open Wednesdays and Sundays 2pm to 4pm; and Saturdays June 1 through August 31st from 10 am – Noon; or by appointment and during some special downtown community events. 6101 Main Street; www.Claytonhistory.org or phone 672- 0240 for more information.

Little League Season

March 14 through July 24: contact Clayton Valley Little League www.CVLL.org or Kevin Dern (415) 760-1198 or email: kdcvll@gmail.com

Soccer Season

Youth: August 1- Nov. 20:contact Mt. Diablo Soccer League, Tom Semple: email

fieldscoordinator@MDSoccer.org

Adult: July – Sept.: contact Clayton Soccer Club, Rob Sears at 925-451-1110

Oakhurst Country Club (private membership golf, tennis, swim, swim team and gym club) www.oakhurstcc.com

Or call 672-9797 x205; x210; x217

Oakhurst Business Networking Mixer – First Thursday of every Month. Open to the Public, free. Oakhurst Country Club, 1001 Peacock Creek Dr. (925) 519-8753; <http://oakhurstcc.eventbrite.com/>

Dana Hills Cabana Swim Club (memberships to the public available) contact Shauna Maffei 925-381-2021; shaunamaffei@gmail.com or www.danahillsotters.com

Dana Hills Swim Team (Otters) contact: Cathy Meyers 683-2125 or cathy@diabloValley.net; or Lauren Velez 768-6685 velezfamily@comcast.net (pentathlon meet is mid July at Dana Hills) www.danahillsotters.com

Clayton Community Emergency Response Team (CERT) - The Community Emergency Response Team (CERT) provides opportunities for residents a, businesses and those that work in the community training to be prepared and have a formal structure in the event of an emergency. Training on home and neighborhood safety and response in various emergency and disaster is provided as well as training on hands only CPR. www.claytoncert.org for more information.

Mt. Diablo Trail Ride Association- is a local non-profit organization dedicated to horsemanship, with 200 acres next to Mt Diablo off Russelman Road just at Clayton's easterly boarder. The MDTR Association has equestrian facilities, club house with pool, and monthly social potlucks, complete equestrian facilities, a club house with pool, horse boarding, horse camping, rentals, a cross country jump course, clinics, events and very affordable membership fees. For more info www.cmdtra.org

Clayton Business and Community Association (CBCA) a non-sectarian, non-partisan and non-profit community organization. working together to improve the general welfare, prosperity and common good of the entire Clayton community. Members are local professionals, businesses and individuals The CBCA provides the vehicle for social networking and camaraderie through fund raising activities, meetings and social gatherings, and for working as a group for our community. The CBCA annually presents four major Clayton events, the Art and Wine Festival, Golf Tournament, Rib Cook –Off, and the Oktoberfest, along with the annual downtown Holiday decorations, Tree lighting with Santa, and Mrs. Claus Tea. Funds raised by the CBCA go back to projects in the community and local schools. www.claytoncbca.org

Clayton American Association of University Women (AAUW) The AAUW promotes equity for women and girls, lifelong education, and positive societal change. The Clayton Branch is highly active in community programs. One notable program is the Clayton Library which was begun by the branch and supported by the members. www.claytonaauw.org

Clayton Valley Woman's Club - CVWC members are community-minded women of all ages, from the Clayton/Concord area and beyond, who have joined together to provide community service through volunteering and fundraising. We are dedicated to meeting the needs and interests of all members as we meet the needs in our community.
www.claytonvalleywomansclub.org

Clayton Valley Garden Club – formed to bring together people in that area with an interest in gardening including community projects such planter boxes on Main Street and near the Clayton Library and the daffodils at the town center entry at old Marsh Creek Rd and Clayton Road. www.claytonvalleygardenclub.org

Clayton Historical Society – membership open to all that have an interest in wanting to learn more and help preserve the local history of the community. It works to research, collect, record, preserve, display, borrow, share, and interpret local history information and memorabilia, and to promote understanding of Clayton origins and development. Its volunteers operate and maintain the Clayton Historical Museum for visitors and hosts student classes and special tours. It locates, records, inventories, publicizes and marks historic sites, buildings and natural features making recommendations. The Society has developed a "twinning" bond with Joel Clayton's birth town, Bugsworth, England, and the town he founded.
www.claytonhistory.org

Diablo Vista Soroptimist – a service organization that focuses on ways to improve the lives of women and girls in our local community and throughout the world. www.sidiablovista.org

Clayton Theater Group – started in 2012– to entertain, educate and elevate the community and surrounding areas with live theater. CTG is a nonprofit theatre company providing performing arts to the local and surrounding community. Spring and fall productions with actors 16 or older are provided and a summer youth theater camp for ages 6-16. Rehearsals and shows at Endeavor Hall – For information contact Roxanne Pardi at 222-9106 or email claytontheatercompany@comcast.net; <http://www.claytontheatrecompany.com> OR <https://www.facebook.com/pages/Clayton-Theatre-Company>

Clayton Valley Sunrise Rotary -- non-governmental, non-religious, non-political service organization serving humanitarian goals in the world with time and effort to help others through service in the local communities. The club is involved in many projects around the world but also has projects that are important in the local community as well. Meetings are breakfast every Thursday morning at 7:00 a.m. at the Oakhurst Country Club, 1001 Peacock Drive, Clayton, CA. www.claytonvalleyrotary.org

School fundraisers and events contact various schools:

Mt. Diablo Elementary School Parent Faculty Club (PFC) Pres. Renee Culp sugarmo@sbcglobal.net or Ernie DeTrinidad ernietrinidad@sbcglobal.net or VP. Holly Tillman at hollytillman@gmail.com
<http://mtdiabloelementary.mdusd.org/PFC> OR www.mdusd.k12.ca.us/mountdiabloelementary

Diablo View Middle School Parent Faculty Club (PFC) Kristy Downs email: fivedowns@sbcglobal.net OR; Jennifer Lauricella email: jlauricella@gmail.com <http://diabloview.mdusd.org>

Clayton Valley Charter Higher School (CVCHS) – an independent public charter high school conversion of Clayton Valley High for more information regarding the Charter High (925) 682-7474 or www.claytonvalley.org OR <http://sites.google.com/site/claytonvalleycharterhighschool>; registrar Helen Bendoyro at (925) 682-7474 x 3109.

Parent Faculty Club – president Deeanne Carlson email: pfc@claytonvalley.org website: <http://www.cvchspfc.com>

Governing Board parent representatives Megan Kommer ph 348-3831 megan.kommer@claytonvalley.org; OR kommer@sbcglobal.net; April Winship april.winship@claytonvalley.org