



AGENDA

REGULAR MEETING

* * *

TRAILS AND LANDSCAPING COMMITTEE

[CITIZENS OVERSIGHT COMMITTEE]

MONDAY, February 8, 2010

7:00 p.m.

*Hoyer Hall at the CLAYTON COMMUNITY LIBRARY
6125 Clayton Road, Clayton, CA 94517*

COMMITTEE MEMBERS

JoAnn Caspar Robert Erich
Victor Geisler Jerry Kosel- Vice Chairman
Kelly Marshall Lorraine Mole
Virginia Siegel- Chairperson
Vice Mayor Hank Stratford (Ex-Officio)

- A complete packet of information containing staff reports and exhibits related to each item is available for public review in City Hall located at 6000 Heritage Trail on Monday prior to the Committee meeting.
- Agendas are posted at: 1) City Hall, 6000 Heritage Trail; 2) Library, 6125 Clayton Road; 3) Ohm's Bulletin Board, 1028 Diablo Street, Clayton; and 4) City Website at www.ci.clayton.ca.us
- Any writings or documents provided to a majority of the Committee after distribution of the Agenda Packet and regarding any public item on this Agenda will be made available for public inspection in the City Clerk's office located at 6000 Heritage Trail during normal business hours.
- If you have a physical impairment that requires special accommodations to participate, please call the City Clerk's office at least 72 hours in advance of the meeting at (925) 673-7304.

* TRAILS AND LANDSCAPING COMMITTEE *

FEBRUARY 8, 2010

1. **CALL TO ORDER & ROLL CALL** – Chairperson Siegel.

2. **CONSENT CALENDAR**

Consent Calendar items are typically routine in nature and are considered for approval by the Committee with one single motion. Members of the Committee, Audience, or Staff wishing an item removed from the Consent Calendar for purpose of public comment, question or input may request so through the Chair.

- (a) Approval of Action Minutes from the Committee regular meeting of November 16, 2009.
- (b) Quarterly report from Public Works Department outlining District maintenance tasks and services performed in the last three months (informational only)
- (c) Status report on future replacement landscaping on berm between Marsh Creek Road and Marsh Creek Circle (informational only)

3. **PUBLIC COMMENTS ON NON-AGENDA ITEMS**

Citizens may address the Committee on items within the Committee's jurisdiction, (which are not on the agenda) by completing a speaker card and forwarding it to the Chair. To assure an orderly meeting and an equal opportunity for everyone, each speaker is limited to 3 minutes, enforced at the Chair's discretion. When one's name is called by the Chair, the speaker shall advance to the public podium and adhere to the time limit. In accordance with State Law, no action may take place on any item not appearing on the posted agenda. The Committee may respond to statements made or questions asked, or may request Staff to report back at a future meeting concerning the matter.

Public comment and input on Public Hearing, Action Items and other Agenda Items will be allowed when each item is considered by the Committee.

4. **CONTINUED/OLD BUSINESS**

- (a) Verbal status report on "Adopt-a-Trail" Program for the Landscape Maintenance District.
(Committee member Mole)
- (b) Verbal status of the TLC display of informational items/photos for the Library Book Case Display that occurred in December 2009.
(Committee member Caspar)
- (c) Consideration of re-establishing a Library Lobby Display
(Chair Siegel)
Recommendation: Determine interested and committee member(s) to undertake
- (d) Verbal status report on water conservation efforts to comply with CCWD water rationing requirements for public agencies.
(Maintenance Supervisor Janney)
Recommended Action: Receive status report.

- (e) Verbal informational report on the new State Landscape Irrigation regulations and Stormwater runoff and implications to the Landscape Maintenance District.
(Asst. to the City Manager Hoffmeister/Maintenance Supervisor Janney)
Recommended Action: Receive status report.
- (f) Consideration and discussion of non-landscape options for median island “noses” on Oakhurst Blvd (from Clayton Road to City Limits)
(Maintenance Supervisor Janney)
Recommended Action: Provide comments and direction or recommendation.
- (g) General discussion of options for landscape area at the Clayton Fountain (Oakhurst Blvd/Clayton Road intersection) for after drought CCWD water restrictions lifted or if/when well water is available to area.
(Maintenance Supervisor Janney)
Recommended Action: Provide comments and direction or recommendation.
- (h) Proposed City Street Tree List for public properties and rights-of way.
(Maintenance Supervisor Janney)
Recommended Action: Recommendation to City Council.
- (i) Status report on future of Measure WW funds use by the City.
(Asst. to the City Manager Hoffmeister)
Recommended Action: Receive status report.

5. **NEW BUSINESS**

- (a) Consideration of participation with an information table at the Spring Clayton Cleans Up Saturday April 24, 2010 (apx. 9am to noon)
(Chair Siegel)
Recommended Action: Determine participation and volunteers to set up, staff and take down.
- (b) Consideration of preparation of updated TLC brochure
(Chair Siegel)
Recommended Action: Determine interest and committee member(s) to update the document .

6. **CORRESPONDENCE** – review of incoming and outgoing correspondence.

- (a) Email from resident Kelly Balog complimenting the recent roadway trimming and maintenance staff and District.
- (b) Email from resident Cheryl Owens regarding suggestion of doggie disposal bag stations and trash cans along trails with response from Chair Siegel
- (c) Email from resident Kevin Creedy regarding concern about bike ramps and jumps in City Open Space/trails and creeks, with response from Asst. to the City Manager Hoffmeister.
- (d) Email from resident Jerry Zimmerman regarding concern about median landscaping plant materials and response from Assistant to the City Manager Hoffmeister.

7. **COMMITTEE ITEMS** – limited to requests and directives for future meetings:

- (a) Next/Future Clayton Pioneer TLC column ideas – Chair Siegel
- (b) Assignment of Committee Report to the:
 - City Council at its Tuesday February 16, 2010 meeting
 - CBCA at its Thursday February 25, 2010 meeting.
- (c) Future meeting dates – May 17, 2010; August 16, 2010
- (d) Future Agenda Items:
 - May 17: Draft Landscape Maintenance District Budget for FY 2010/11.
- (e) Committee Member communications
- (f) Staff Communications/Announcements

8. **ADJOURNMENT**– The Committee's next regularly-scheduled meeting is anticipated to be Monday, **May 17, 2010 at 7:00 p.m.** in Hoyer Hall, Clayton Community Library. Please contact the City Clerk at 673-7300 to verify actual date.

#

Agenda Date: Feb. 8, 2010

Agenda Item: 2(a)

ACTION MINUTES
OF THE
SPECIAL REGULAR MEETING
TRAILS AND LANDSCAPING COMMITTEE
[Citizens Oversight Committee]

November 16, 2009

1. COMMITTEE CALL TO ORDER & ROLL CALL

A. The meeting was called to order at 7:05 p.m. by Chairperson Virginia Siegel at Hoyer Hall Community Meeting Room at the Clayton Library, 6125 Clayton Road, Clayton, CA.

Committee Members present: JoAnn Caspar, Robert Erich, Victor Geisler, Lorraine Mole, Virginia Siegel (Chair); Vice Mayor Hank Stratford (ex-officio Member).

Committee Members absent: Jerry Kosel (Vice-Chair); Kelly Marshall.

Staff present: Assistant to the City Manager Laura Hoffmeister, Maintenance Supervisor Mark Janney.

B. Introduction of newly appointed committee members: Lorraine Mole introduced herself; she is a Mitchell Canyon Road resident. Robert Erich introduced himself; he is a resident in Oakhurst Peacock Creek area. The remaining members introduced themselves.

2. CONSENT CALENDAR

(a) Approval of Action Minutes from the Regular Committee meeting of August 18, 2009.

Motion by Chair Siegel, seconded by Committee member Caspar. Motion passed (vote: 3 yes; 2 abstain – Erich, Mole)

(b) Monthly report from Public Works Department outlining District maintenance tasks and services performed in the last three months.

(c) Clayton Pioneer articles September 11, 2009, and August 25, 2009 “Annual Report”

Motion by Chair Siegel, seconded by Committee member Caspar to approve the Consent Calendar except for the minutes. Motion passed (vote: 5-0).

3. PUBLIC COMMENTS

None.

4. CONTINUED BUSINESS

(a) Verbal status report on “Adopt-a-Trail” Program for the Landscape Maintenance District; Adopt-a-Trail revenues/expenses report status.

Chair Siegel reported on positive feedback from the Girl Scouts who recently became a volunteer group with the CBCA as financial sponsorship. Chair Siegel provided an update and noted that the one year will be coming up and the financial sponsors and volunteer labor sponsors needed to be contacted to see if they are interested in renewing for another year. Chair

Siegel explained that the sponsorships are for one year, and that each group can renew for future years, the idea is to grow the revenue funds so they can be used to supplement work projects on the trails. If a group does not renew then their trail is available for a new sponsorship. The Chair asked for Committee member volunteers to undertake this task. Committee member Erich volunteered to contact the financial sponsors and Committee member Mole agreed to contact the volunteer labor groups. Chair Siegel would provide Committee members Erich and Mole with the contact information.

(b) Consideration of creating a display of informational items/photos for the Library Book Case Display for December 2010.

The Assistant to the City Manager informed the Committee members that former Committee member Bass had reserved the use of the Community Display Cabinet located inside the Library for use of display exhibit. A photo of the display cabinet was provided. The Committee could keep the reservation and place an exhibit in there during the entire month of December. The Committee would be responsible for obtaining items and placing them in the cabinet and then removing them. If the Committee was not interested in this opportunity, it could cancel its reservation. There is no cost for the use and no cost to cancel, however a decision needed to be made at this meeting on whether or not to proceed. Chair Siegel suggested that maybe an exhibit about the Adopt a Trail could be placed in there. Committee members supported this concept. Committee member Caspar volunteered to coordinate this and would contact the Librarian for additional information. It was the consensus of the Committee to proceed with the exhibit in the Community Display Cabinet in the Library with Committee member Caspar to coordinate.

(c) Status of the Library Lobby Display

Asst. to the City Manager Hoffmeister stated that Committee member Bass had removed her folding table and the materials on it. Committee member Casper gave Committee member Kosel the materials that were on the folding table display she had received them from Committee member Bass. At the August meeting Committee member Kosel had volunteered to prepare a new display for a card table, and Chair Siegel and Casper stated that they could assist Committee member Kosel with the display information as needed; City staff could furnish a folding table. The Committee would be responsible for placing information/materials on the table and maintaining it. The TLC brochure which was one of the items on the table display is also out of date and should be updated if going to be an item on the table.

Consensus of the Committee that since the interior Library Lobby cabinet was going to be used in December and Committee member Kosel was absent that this item be continued to the next meeting.

(d) Verbal status report on water conservation efforts and downtown well for Public Landscaping to comply with Contra Costa Water District (CCWD) water rationing requirements for public agencies.

Maintenance Supervisor Janney reported on that the landscape district appeared to be within the rationing requirements and with the downtown well were able to reallocate some CCWD water use

for use on shrubs and trees in the Landscape District. The CCWD billing statements run behind actual use so it would be some months before actual information was available. Even with the well there was not enough water to reallocate to lawn in front of the Clayton Fountain. It appears there may be opportunity to include Daffodil Hill in well water, but even with well water the prominence of the location would be difficult for the public to understand that it is well water use. At this point the City Council has directed the planting be held off until the CCWD water rationing is lifted or modified. Overall the TLC complemented the Maintenance staff for meeting the requirements and having to manage a challenge issue. Maintenance Supervisor Janney stated that preliminary cost information on installing a second well and pump at the Library for use to the east on Clayton Road to the Clayton Fountain is still being worked on by staff.

(e) Verbal status report of construction projects in the Landscape District

- *Daffodil Hill entry and Oak Street Off ramp*
- *Black Diamond Plaza Trail Bridge surface replacement*
- *Tractor Project*

Assistant to the City Manager Hoffmeister updated the Committee. It was further noted that these construction projects are being funded by sources other than the LMD however will benefit the LMD. She noted that the Daffodil Hill now officially known as Town Center Entry has been completed except for the planting which as mentioned in the prior agenda item is temporarily on hold. The Oak Street off ramp has been completed and the City installed new posts for community event banners which now would allow up to four banners at a time. In response to Committee questions it was clarified that community events had to meet certain criteria and be done by Clayton based non profit or City or City contractor such as the YMCA for the recreation programs. Requests for use are made to the City staff which verifies if the event and event organizer would meet the City Council approved written criteria for display consideration; if it did and the date available then it would be allowed. Additionally the banners were limited to 14 day display prior to the event.

Black Diamond Plaza Bridge replacement has been completed. The contractor had to return to redo some of the plank screws and make some adjustments to the cuts. The City Engineer had the manufacturer of the artificial lumber verify that the corrections were needed. All work is now complete per industry standards and specifications. Committee members noted that it looks really nice and is a great improvement. They liked the surface and color that was selected.

Pictures were included in the TLC packet showing the location of the tractor projects. The tractor projects are on hold due to need to address surface area under the tractor and other safety issues if they are allowed to be climbed on which is a desire of the CBCA tractor committee. The tractors have been purchased and are being stored by the CBCA. The added funding needed for the surface and mounting has not been committed. The City currently lacks funding sources to supplement the additional funds needed. An alternative such as fencing the area and posting not climbing is an option but to date is not preferred by the CBCA tractor committee. They desire more close up and personal interaction by children, thus the required safety measures need to be included.

5. NEW BUSINESS

- (a) General Discussion of next steps after drought for Landscape Maintenance District – potential improvement areas in the Landscape Maintenance District*

Maintenance Supervisor Janney explained that a LMD improvements process plan has been prepared by staff in keeping with the TLC prior discussion on future "Vision" of the District. He stated specifically what improvements might be able to be considered, what criteria should be used to prioritize the areas, what would be the prioritization of areas, and what could be done in the areas. There are some funds available in the District to begin to look into these, however with the water restrictions from CCWD any replanting would need to wait until the restrictions are lifted. The plan is based upon two general criteria: Areas that give the District the largest savings offer the long term in reduced water usage and maintenance while enhancing the landscape appearance; and plant replacement opportunities caused by drought where no other over tiding factor exists such as substandard irrigation, substandard soil, or mass loss of plant life prior to the drought.

Using this criteria there were 5 levels or steps that were recommended. The first step would be areas that would reduce maintenance issues and have little or no irrigation upgrades needed, and could be more easily implemented in the short term. The last step or level, step 5, includes areas that would have major cost or changes needed in order to implement and are more long term to address.

After some discussion the Committee agreed with the criteria provided by staff and the steps outlined. The committee thanked maintenance staff for the work in preparing the information and found it very helpful as to what the next steps might be for the LMD in going forward with any improvements as funds allow. Committee members also stated that it is helpful in terms of assisting them to focus on the next steps that the TLC could be working toward as part of the Vision process. The Committee was interested in obtaining more information regarding two areas or projects in the first level: potential hardscape of Oakhurst Blvd. median noses, and options for replanting the Clayton Fountain Water Feature. Maintenance Supervisor Janney stated that he could prepare some cost information on options for these two areas and bring it back at the next meeting.

There was consensus by the Committee to accept the staff report of criteria and "next" steps of potential improvement areas for the District as a working document which could be modified as new, different or more information becomes available; and for staff to return at the next meeting with cost information on options for the Oakhurst Blvd. median island noses and the Clayton Fountain Water Feature.

(b) Consideration and recommendation regarding replacement landscaping on landscape berm between Marsh Creek Road and Marsh Creek Circle.

Assistant to the City Manager explained that this is an area that when the Marsh Creek Road was widened 17 years ago the City Council approved the installation of a landscape berm to serve as a buffer the adjacent homes from the widened road, specifically to reduce car headlight glare and noise. The City Council has received complaints that this buffer has degraded to where they are having impacts to their homes especially from car headlights. The area is unique in that it is the only area where homes front to a major arterial street. Other homes in the community have fencing/soundwalls along the streets. Maintenance Supervisor Janney explained that over the years the landscaping has had deteriorated and is sparse in many place, surface rooting etc. he reviewed the re-planting cost estimate of \$17,900 which includes the extra water needed for plant establishment period of 2 years. He further noted that it include soil amendment as the area

has rock and base rock from the road widening that was used to create the berm which has contributed to the lack of plant growth and die off. He further noted that due to the drought restrictions this project if approved would be placed on hold until the water restrictions were lifted. The LMD has sufficient funds to address this area.

Assistant to the City Manager Hoffmeister stated that staff has met or notified the neighbors about the replanting information as staff wanted to get feedback from the TLC first. If the TLC is supportive to recommend this as a priority project, staff would follow up with the neighbors with a meeting and advise them of the project and the hold pending drought restriction being lifted or modified. Maintenance Supervisor Janney suggested he could discuss and provide a temporary erosion silt fence about 2-3 feet high on the berm if the neighbors desire, as a short term solution to the car headlight issue. The replanting may also need approval by the City Council before proceeding. If a City Council meeting is needed the neighbors would be advised in advance of the meeting so they could attend, write letter, if they so desired.

Committee members stated their support for this to be a priority replanting area and noted the unusual and unique circumstance of this area. This circumstance does not exist anywhere else in the City, the reasonable cost of the project and there are funds available to do this project.

Motion by Committee member Geisler, seconded by Chair Siegel, to recommend the replanting plan subject to input by the neighbors; this as a priority area pending lifting or modification of the Water District rationing; and to direct staff to follow up with the neighbors including the installation of temporary "silt style" fence on the berm; and advising the neighbors of any future City Council meeting on this project recommendation. Motion passed (vote: 5-0).

6. **CORRESPONDENCE** – *review of incoming and outgoing correspondence.*

(a) *None.*

7. **COMMITTEE ITEMS**

(a) *Next/Future Clayton Pioneer TLC column ideas:*

The Consensus of the TLC was at this time there was nothing appropriate for a column. This would item to be placed on the next TLC agenda and determination made at that time if any appropriate topics. Suggestions for future included: Adopt a Trail sponsorships still available; replanting vision-however it was noted that replanting topic would need to go to City Council for final approval before any article done. Additionally it was noted that this would be dependent on funds and drought conditions etc. If the hardscape or non planting of the median noses moves forward and is approved by the City Council, that could be a topic, since it would not be replacing plant materials so not water restriction dependent. Also suggested was update on the Town Center Entry planting project.

(b) *Assignment of Committee Reports:*

City Council November 17, 2009 meeting would be Vice Mayor Stratford (Ex-Officio Member CBCA November 19, 2009 meeting: – None.

(c) Future agendas to include:

- Adopt a Trail subcommittee status report.
- Library Lobby Display
- Status of Drought Management Plan and action plan update
- Continued discussion of next steps after drought for LMD – potential improvement areas and costs and suggested priorities
 - Median noses landscape costs
 - Water Feature replanting options/costs
 - Other Landscape District areas

(d) Future meeting date:

Due to President's Day Holiday on next regular quarterly meeting date, it was the consensus of the Committee to hold the next meeting on Monday February 8, 2010.

(e) Committee member communications:

Vice Mayor Stratford noted that the City Council will re-organize at its first meeting in December. At that time a new mayor and vice-mayor would be selected. He noted that the Vice- mayor has traditionally been the liaison. He was not sure if he would be the liaison for the next year, he hoped so as he really enjoyed this group.

(d) Staff Communications:

None.

8. ADJOURNMENT

Upon call by Chairperson Siegel, the meeting adjourned at 8:40 p.m.

Minutes prepared by:

Laura Hoffmeister, Asst. to the City Manager

APPROVED BY THE COMMITTEE

Virginia Siegel, Chairperson

Agenda Date: Feb. 8, 2010

Agenda Item: 2(b)



**CITY MAINTENANCE
QUARTERLY REPORT
UPDATE
TRAILS & LANDSCAPING DISTRICT
11/13/09 to 2/8//10**

- Continued to Trim Landscaping and removed dead plants; Along Old Marsh Creek Road, Atchinson Stage Road, and Clayton Road from Mitchell Canyon Road to City Limits
- Spot spray herbicides in the Landscape District Citywide
- Trimmed all Crape Myrtle Trees in the Landscape District
- All irrigation still turn off within the Landscape District
- Replaced Filter Pump at the Water Feature and rewired the lighting within the vault that had been corroded
- Installed water bars in the quarter by dust trails at the Plaza to Center Street trail and the trail behind the retaining wall along Old Marsh Creek Road

Memo

Agenda Date: Feb 8, 2010

Agenda Item: 2(c)

To: Trails and Landscape Committee

From: Maintenance

Meeting Date: February 8, 2010

Re: Marsh Creek Circle Update

Since our last TLC meeting staff has meant numerous times with the resident that has spear headed the request to replace dead and missing plantings between Marsh Creek Circle and Marsh Creek Road. The resident has been supportive of the plan to replace the landscaping that has lost over the last 15 plus years. During these conversations staff learned of another area of concern from car headlights that would likely not be buffered by plantings, and is now trying to remedy this issue for the residents. To do this Staff has placed for a short distance along a low portion of the berm a temporary three foot high screen up to block the lights that shine into their windows and if this is successful will look to but up a more permanent screen using colored vinyl chain link fencing with matching colored slats (ie: green like the dark park with green vinyl slats).

Adopt a Trail status as of 2/8/2010

Adopters/Revenues

<u>Name</u>	<u>Sponsor Type</u>	<u>Trail Section</u>	<u>Amount Recvd</u>	<u>Date \$ Recvd</u>	<u>Ag. recvd</u>	<u>Start Date</u>
Pauline Family	Volunteer Labor	Cardinet Trail (Library - Lydia Ln Pk)	\$200	2/3/2009	Yes	3/1/09
Black Diamond Electric	Financial	Cardinet Trail (Library - Lydia Ln Pk)	\$1000	2/3/2009	Yes	3/1/09
Jeff Waldron	Volunteer Labor	Bruce Lee Trail	\$200	2/3/2009	Yes	3/1/09
<u>Available</u>	Financial Sponsor	Bruce Lee Trail				
Employees of						
CD Federal Credit Union	Volunteer Labor	Blue Oak Trail	\$200	2/9/2009	Yes	3/1/09
CD Federal Credit Union	Financial Sponsor	Blue Oak Trail	\$1000	2/9/2009		3/1/09
Kinder Care (Knowledge Learning Center)	Volunteer Labor	Lower Easley Trail	\$200	4/14/2009	Yes	5/1/09
<u>Available</u>	Financial Sponsor	Lower Easley Trail				
BSA Troops 262 & 284	Volunteer Labor	Donner Creek Trail	\$200	7/28/2009	Yes	7/1/09
<u>Available</u>	Financial Sponsor	Donner Creek Trail				
GSA Troops 30429 & 31895	Volunteer Labor	Cardinet Trail (Lydia Ln Pk - Westwood Pk)	\$200 (from CBCA)	8/7/2009	Yes	8/4/2009
CBCA	Financial Sponsor	Cardinet Trail (Lydia Ln Pk - Westwood Pk)	\$1000	8/7/2009	Yes	8/4/2009
Total Revenues			\$4200			

Adopt a Trail Expenses

<u>Date</u>	<u>purpose</u>	<u>Amount</u>
3/8/2009	19.5 hrs maintenance temp labor make/ install signs	\$219.00
4/17/2009	materials for sign posts	\$1527.34
6/23/2009	signs printing (bay area barricade)	\$98.87
6/30/2009	t-shirts	\$289.51
8/9/2009	wood for future sign posts - (dolan's lumber)	\$595.15
8/9/2009	sign printing (bay area barricade)	\$10.93
Total Expenses		\$2740.08

2/8/2010 Account Balance: \$4200 - \$2740.08 = **\$1459.92**

Agenda Date: Feb. 8, 2010
 Agenda Item: 4(a)

Agenda Date: Feb. 8, 2010

Agenda Item: 4 (b)

Community Display Cabinet at Library December 2009

TLC – Adopt a Trail Exhibit



Agenda Date: Feb. 8, 2010Agenda Item: 4 (c)

Memo

To: Trails and Landscape Committee**From:** Laura Hoffmeister, Assistant to the City Manager**Date:** February 8, 2010**Re:** Library Lobby Display area

In the past the TLC has had a small folding table in the corner of the Library Lobby area below. At the August meeting it was learned that former Committee member Bass removed her folding table and the items, as the items were out of date and it was her folding table that was used and she is no longer on the TLC. Committee member Kosel at that meeting was going to consider re-establishing the Lobby Display. City staff does have a folding table that can be used. The display area is an opportunity for the TLC to provide information to the community. Brochures, visual picture displays, posting of the Maintenance Quarterly report can all be done. However it is up the Committee members to prepare and maintain it. All materials are to be placed on the table, there is not to be any posting on the walls or windows.



Agenda Date: Feb. 8, 2010

Agenda Item: 4(d)

TRAILS AND LANDSCAPE COMMITTEE MEETING

City efforts to comply with CCWD – (Contra Costa Water District) water rationing requirements for public agencies as it relates to the Landscape Maintenance District

No written Materials for this item - Verbal status Report to be provided by Maintenance Supervisor Janney

Agenda Date: Feb. 8, 2010

Agenda Item: 4(e)

Trails and Landscape Committee Meeting

State Landscape Irrigation regulations and State Stormwater runoff regulations and implications to the Landscape Maintenance District

No written materials for this item – Verbal general information to be provided by Asst. to the City Manager Laura Hoffmeister at the meeting.

Agenda Date: Feb. 8, 2010Agenda Item: 4(f)

Memo

To: Trails and Landscape Committee**From:** Mark Janney, Maintenance Supervisor**Meeting Date:** February 8, 2010**Re:** hardscape Options for median island noses along Oakhurst Blvd (from Clayton Road to west City Limits).

The City in order to stay within the CCWD water allotment for landscape areas eliminated watering in lawn areas of the district that were on CCWD supplies as well as reduced watering overall in other areas. This water reduction has future stressed remaining shrubs and oleander trees in the median noses of the Oakhurst Islands. The plants in these areas are also at the end of their life. The medians themselves are narrow typically 18" – 28" and 3 feet as they spread to the main island. In consideration of the dead and removed plants and minimal plantings remaining that are not in good health, there was desire to evaluate these areas for being treated with hardscape. This direction came from the discussion of next steps in the district and the criteria that had been proposed for use in evaluation of addressing re-landscaping areas. Specifically the criteria proposed included the following:

Areas that give the District the largest savings over the long term in reduced water usage and maintenance while enhancing the overall appearance of the area and or District.

Replanting for those areas that had plant loss or additional plant loss due to the drought where the irrigation systems are adequate, and soils and size of planting areas are adequate to support new plants.

In using these criteria it was suggested that the median noses along Oakhurst Blvd. have had plant loss and detract from the overall appearance of the District. They also require more labor to manage the plants in the small planting areas. Further plants are subject to impacts of the adjacent auto traffic speeds. The area is narrow and soils poor condition and irrigation systems in poorer condition. These noses are the only ones in the City that have not had any hardscape treatment. Marsh Creek Road, and Clayton Road, the other major arterials with median noses have brick hardscape.

Staff was requested to bring back cost information for non-landscape treatments of this stretch of roadway. In general the cost to install brick pavers similar to that on the other roadways would be about \$43,700. To use decorative gravel or river rock the cost would be about \$17,480. With either option there would be minor cost savings for water and other cost savings for labor.

To include plants in the medians with hardscape would require the repair of irrigation, replacement of irrigation heads and removal and replacement of the poor soils with proper planting mix. Water and Labor costs would not be saved.

There is currently available funds in the District reserves to cover costs with a median nose project for Oakhurst Blvd.

ESTIMATE FOR HARD-SCAPING ISLAND MEDIAN IN OAKHURST

The Clayton Landscape District has eight narrow and three wider median noses that are good candidates for hard-scaping with brick pavers or stamped concrete along Oakhurst Drive. At the last Trails and Landscaping meeting the members ask staff to come up with an estimate to hard-scape these areas with the intent to beautify and save maintenance monies over the long term to the District on water and trimming of these areas. These areas were planted with Oleander Trees and Escallonia which in many areas has been removed either from dying, hit by cars, or blowing over in storms. These areas should not have been landscaped when the Oakhurst Development was built or if it was going to be planted use a more suitable tree and small shrub. The eight narrow medians noses average from 100 feet to 200 feet long and average 3 feet across. The three wider sections of median noses average 10x10 feet.

There is approximately 4,370 square feet of area to be hard-scaped from the Median from the Fountain to the City Limits near Concord along Oakhurst Blvd.

1. Use Brick Pavers @ \$10 SQFT Total Cost \$43,700
- 2 .Use Stamped Concrete @ \$7 SQFT Total Cost \$30,590

Both types would need City crews to prep the site with the removal of existing irrigation and plants. Also the area would need to be rough graded for the contractor. The work would take two to three days to complete at a cost of \$3,000

The difference between using concrete over brick besides the cost difference would be when dealing with future maintenance. Bricks would make it easier to perform repairs if there was a wiring or irrigation problem. Both signal and street lights wiring run under ground along the median and so does the Cities irrigation main lines. If they were to need to be dug up and repaired the concrete would have to be cut out and new concrete poured where as the brick could be pop up and then reset after the repair is completed. Also brick pavers are the material that is now in use currently throughout the Cities Landscape District.

A third type of material could be some type of rock either a granite type or river rock. Using these types of materials you do run the risks of having people throw the material into the street or on coming cars. However, this is a major arterial with little to no school kids walking and it would be in the median, so the potential for this mischief is greatly reduced. The river rock on Old Marsh Creek Road is along the sidewalk areas and is a heavily used school walking route. Two areas where this type of material is in use are on Clayton Road at the entry medians to the City (granite type) and Old Marsh Creek Road (river rock). The City has not had any problems with the granite type rock; however it is located in the median on a main arterial street Clayton Road.

3. Use decorative gold tone small granite rock or River Rock @ \$4 SQFT Total Cost \$17,480

Oakhurst Blvd.
Median Noses
Hardscape
project area limits





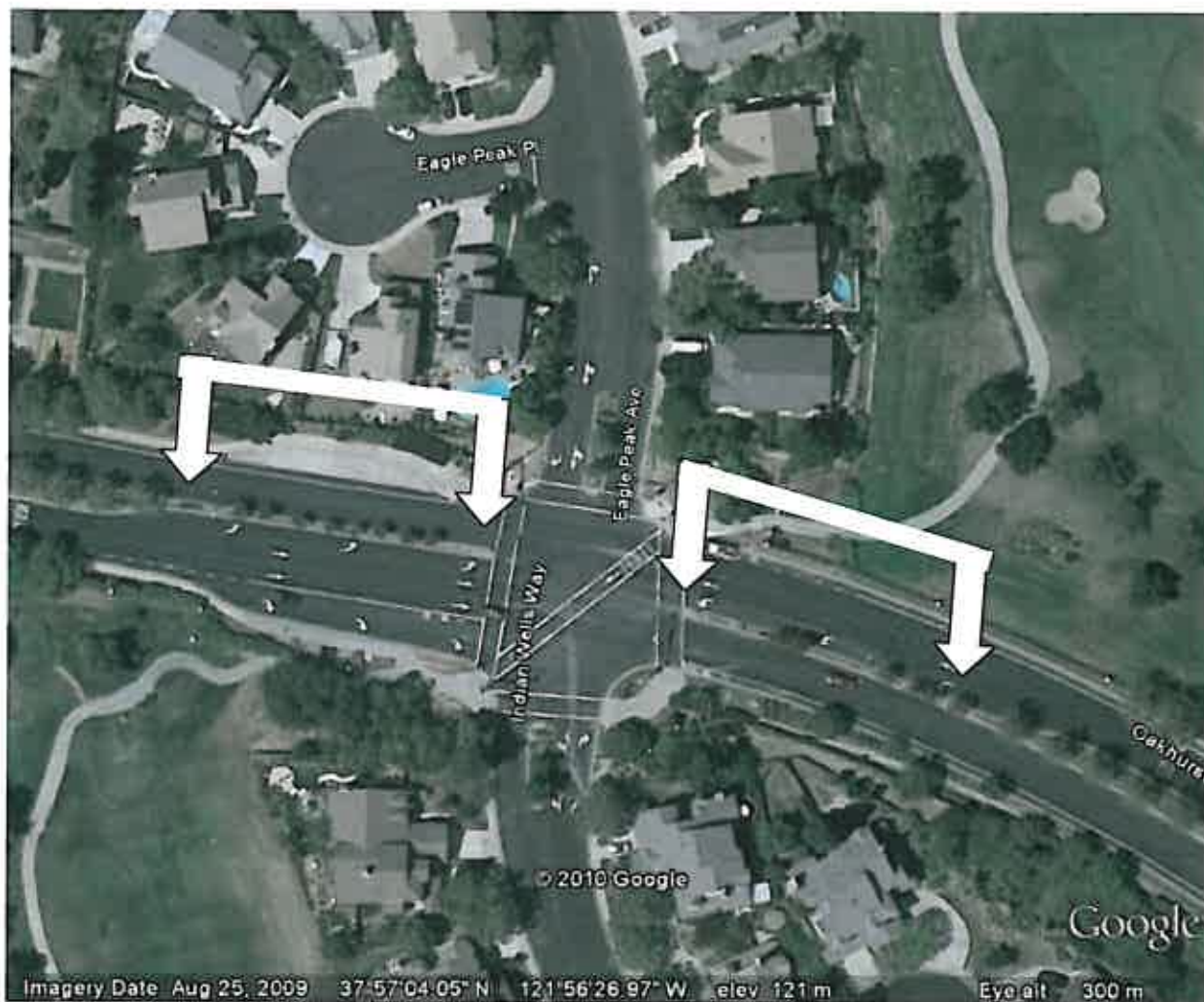
Oakhurst Blvd @ Clayton Road



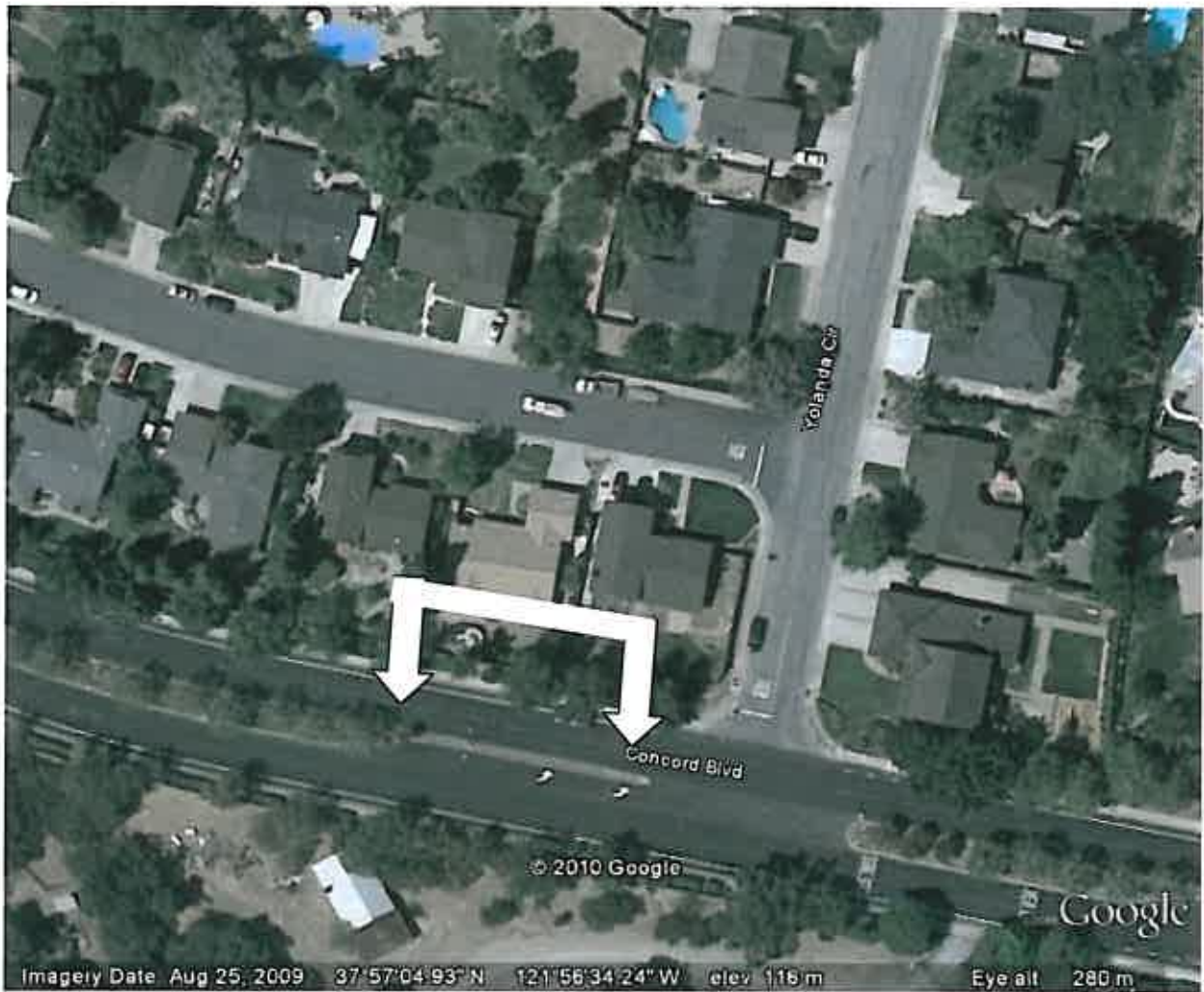
Oakhurst Blvd @ Indianhead Way



Oakhurst Blvd @ Indian Wells/Eagle Peak (East)



Oakhurst Blvd @ Indian Wells/Eagle Peak (West)



Oakhurst Blvd @ Indian Yolanda Circle (East)



Oakhurst Blvd @ Indian Yolanda Circle (West/ City Limits)





5696 Oakhurst Dr Exit Photo

5692 Oakhurst Dr

Google

Eye all 118 m



5698 Oakhurst Dr Photo

5692 Oakhurst Dr

Google

Eye alt 119 m

Clayton Rd / Oakhurst Dr Exit Photo





7048 Marsh Creek Rd Exit Photo



Eye alt 144 m

6598 Marsh Creek Rd Exit Photo



Google

Eye alt 139 m

5440 Clayton Rd Exit Photo



Google

Eye alt 102 m

1520 Clayton Rd Exit Photo



Google

Eye alt 101 m

Agenda Date: Feb. 8, 2010Agenda Item: 4(g)

Memo

To: Trails and Landscape Committee**From:** Mark Janney, Maintenance Supervisor**Meeting Date:** February 8, 2010**Re:** Cost option information for Water Feature (Fountain area) and triangle island adjacent to water feature Oakhurst Blvd/Clayton Rd.

The City in order to stay within the CCWD water allotment for landscape areas eliminated watering in lawn areas of the district that were on CCWD supplies as well as reduced watering overall in other areas. As a result the lawn areas have died. One of the larger areas of lawn is that in front of the Water Feature (Fountain) and the triangle island adjacent to it. In looking forward for when water supplies would be available the Maintenance Staff presented a concept drawing that re-landscaped the water feature area a bit differently than exists today. In general the concept was to reduce the amount of lawn area, and add more shrubs and trees to areas adjacent to the golf course fence, and eliminate the annual planting beds. The TLC requested staff return with more information as to cost estimates and also costs for re-establishing the lawn as was existing area and also artificial turf. Also requested were hardscape options for the triangle median. Staff however does not believe that all hardscape in the triangle median would be appropriate, as it is visually tied into the Water Feature when driving east along Clayton Road and may be too much area for hardscape to blend with any Water Feature landscape area.

The requested information is attached. In summary the water feature re-design with less lawn and more trees, shrubs etc., would be about \$72,000. Adding in the triangle area with lawn for \$1,000 would be a total of \$73,000.

If the re-design used artificial turf instead of real lawn the cost would be \$149,000 – 189,000, with the triangle in artificial turf too there would be an additional \$32,000-\$48,000 in cost for a total of \$181,000-\$237,000.

If artificial turf was used for all the previous lawn area of the water feature only would be \$160,000-\$240,000. (To include the triangle area would be \$32,000-\$48,000. however there may be some economies of scale if done at the same time as the water feature area so that the cost estimate of the water feature may be enough to cover both items).

To re-seed the water feature area would be \$2,000 and about another \$1,000 for the triangle area.

**ESTIMATE COSTS FOR TRIANGLE ISLAND
AREA ADJACENT TO WATER FEATURE
OAKHURST BLVD @ CLAYTON ROAD**

The following are estimates based upon the following:

The area in front of the water feature that is a median island has approximately 4,000 sqft

For natural grass the area can be reseeded @ .25 per sq ft is \$1,000

For Artificial Turf the cost @ \$8-\$12 per sq ft is \$32,000 to \$48,000

For decorative granite gravel or river rock the cost @ \$4 per sq ft is \$4,000

ESTIMATE COST TO UPGRADE WATER FEATURE LANDSCAPING

The following estimate is based on the conceptual drawing that was shown at the last Trails and Landscape meeting in November. Total estimate cost for this plan is \$71,823; this would be doing the installation in house and using sub contractors for some of the installation work. Cost can be better estimated when a full set of construction drawings are commission with a detail irrigation and plant plan. To have this completely build by a Contractor could increase the cost by 20%.to 50% of the above estimate. The following is a breakdown of cost including footage and quantity all being only estimates which could change after a final plan is decided on.

Boulder Rocks 17 plus rocks added @t 3,000LBS or more	\$5,000
Mountain Art in Concrete 1,200 SQFT @ \$7 to \$8 SQFT	\$10,000
Border with Rock 310 LF @ \$12 LF	\$3,720
Border mow stripe 320 LF @ \$6 LF	\$1,920
Lawn 10,000 SQFT @ .25 SQFT	\$2,500
Top Soil 120 Yards @ \$33 Yard	\$4,326
Bark 60 Yards @ \$36 Yard	\$2,360
Trees and Shrubs	\$10,217 ¹
Irrigation fittings and equipment	\$13,500 ²
Labor	\$16,500 ³
Misc Supplies	\$1,750 ⁴
TOTAL	\$71,823

¹ This price include (30)24inch box trees, (180)5gallon shrubs, and (220)1gallon shrubs/groundcover Some of theses plant sizes could be change for cost savings

² This price includes upgrade of the controller, the control valve assembly, and the replacement of the sprinkler system to conform to the new landscaping

³ This price is for installation of irrigation, grading, and planting

⁴ This includes fertilizer, lodge poles, herbicides, and tree ties

COST ESTIMATE FOR ARTIFICIAL GRASS or RE-SEEDING LAWNS AT WATER FEATURE

As an alternative to a full redesign of the Water Feature is to keep the area with the same amount of lawn either using artificial grass or re-seeding the existing. The area of existing lawn is approximately 20,000 sqft in size

Artificial Grass Installation - The cost to install artificial lawns can vary widely depending on type, warranty and the need for preparation of the site. Staff as attached some information about artificial lawns from manufactures and cost estimates that were done for the Community Park this past year for review. A good estimate from this information would be from \$8 sqft to \$12 sqft. This translates into a cost from between \$160,000 to \$240,000 for new installation. The TLC could also look into making the lawn area smaller and installing a mix of trees and shrubs where lawn existed which would reduce the overall cost. When looking at the costs to install artificial lawn one has to remember that there will be cost savings in the long run from not watering and mowing the lawn. This does not mean it is entirely cost free for the life of the product. There will be cost of adding infill, clean up from spills or graffiti, and repairs if it gets torn over the life of the product. These costs are hard to estimate because they are unknown until they occur.

Re-Seed existing lawn - The cost for the reseeded will be about \$2,000 for seed and broadleaf herbicide. Some minor repair would need to be performed to the irrigation systems do to non use over the last year. There would also be some labor time to seed and do any broadleaf spraying for the new lawn (about 16 man hours). Also at this time would suggest the removal of the annual flower planter and the continuation of lawn in this area. This would give the district labor cost saving of not having to plant annual flowers and maintaining them yearly as was done before the drought. This would save the district between \$3,000 and \$3,500 a year in costs to plant and maintain.







©2010 Google

Imagery Date: Aug 25, 2009 37°58'33.98" N 121°55'50.25" W elev: 131 m Eye alt: 178 m

Google

was obtained include Foster City, Davis, Town of Danville, and Redwood City. An estimate from the City of Carlsbad in southern California was also obtained.

The turf supplier indicated that installation of the synthetic turf is between \$4.50 and \$4.75 per square foot, excluding any subgrading or other cost components. Once the other required components are added (e.g. subgrading, drainage, fencing, and irrigation), cost per square foot increases to between \$8.00 and \$12.00 per square foot. Taking these estimates from the supplier, a range of cost for the Clayton sports fields are shown in Table 2.

**Table II-2, Estimated Synthetic Turf Cost for Clayton Sports Fields
Based on Data Provided by Turf Manufacturer**

Community Park Sports Field Dimensions		
Lower Field	123,700	square feet
Middle Field	78,100	square feet
Upper Field	70,300	square feet
Total	270,100	square feet
Synthetic Turf Cost Range		
	\$8 per sq. ft.	\$12 per sq. ft.
Lower Field	\$989,600	\$1,484,400
Middle Field	\$608,800	\$913,200
Upper Field	\$562,400	\$843,600
Total	\$2,160,800	\$3,241,200

The synthetic turf cost estimates obtained from the cities provide another set of estimates. Specific bid prices for a few projects were obtained and provided in the appendices. A summary of the cost estimates for the turf projects in other cities is shown in Table 3. The range of cost are from \$8 to close to \$16 per square foot.

Table II-3, Synthetic Turf Cost for Other Cities

City/Turf Project	Cost	Sq. Ft.	Cost per Sq. Ft.
Foster City			
2008 Bid Schedule			
<i>Sea Cloud Park Total</i>	\$865,393	78,990	\$10.96
<i>Synthetic Turf & Striping Portion</i>	\$367,303	78,990	\$4.65
<i>Catamaran Park Total</i>	\$1,078,491	68,180	\$15.82
<i>Synthetic Turf & Striping Portion</i>	\$317,037	68,180	\$4.65

City of Davis			
Bid Schedule, 2009 Installation, Playfields Park Soccer Field			
<i>Estimated construction/contract award</i>	\$1,090,874		
<i>Estimated construction contingency (10%)</i>	\$109,087		
<i>Construction Management & Inspection</i>	\$14,123		
<i>Design</i>	\$50,000		
<i>Total Project Cost</i>	\$1,264,084	91,555	\$13.81
<i>Synthetic Turf Portion</i>	\$423,332	91,555	\$4.62

Redwood City			
Synthetic playfields conversion	\$400,000	n/a	n/a

Town of Danville			
Sycamore Valley Park athletic field renovation in 2003, 3 lighted baseball and 2 lighted soccer fields			
<i>Design / Plan Review</i>	\$126,000		
<i>Construction</i>	\$3,098,642		
<i>Inspection & Admin</i>	\$90,358		
<i>Total</i>	\$3,315,000	n/a	n/a
Diablo Vista Park soccer field in 2003			
<i>Construction</i>	\$894,519	n/a	n/a

Carlsbad			
Synthetic turf soccer field at an existing park	\$750,000	n/a	\$8.00
Two existing ballfields, cost includes \$65,000 in design costs (architect, turf consultant)	\$1.2 to \$1.4 million	n/a	\$8.00
<i>Square Foot Cost are according to the City</i>			

From the city estimates, a larger range of cost for the Clayton sports fields are shown in Table 4.

**Table II-4, Estimated Synthetic Turf Cost for Clayton Sports Fields
Based on Data Obtained from Cities**

Community Park Sports Field Dimensions		
Lower Field	123,700	square feet
Middle Field	76,100	square feet
Upper Field	70,300	square feet
Total	270,100	square feet
Synthetic Turf Cost Range		
	\$8 per sq. ft.	\$16 per sq. ft.
Lower Field	\$989,600	\$1,979,200
Middle Field	\$608,800	\$1,217,600
Upper Field	\$562,400	\$1,124,800
Total	\$2,160,800	\$4,321,600

The “useful” life of the turf material is determined by many factors including rate and type of usage, weather, and level of maintenance and care. A rule of thumb utilized by the manufacturer is the “8-12 warranty rule”, referencing the number of years (8-12 years) before turf replacement based on the total price per square foot paid (\$8-\$12).

When synthetic turf is replaced at the end of its useful life, the materials and installation cost of the synthetic turf (excluding the subgrade) is currently between \$4.50 and \$4.75 per square feet. At these prices, the synthetic turf replacement cost for the Clayton fields would range between \$1.215 million to \$1.283 million.

Parking Lot Expansion

Expansion of the upper and lower parking lots is another proposed facility improvement. Clayton staff provided a range of possible new parking spaces, from a minimum of 41 to a maximum of 143 additional spaces. Estimated cost data to construct new off-street parking was gathered from a review of available on-line sources.⁴ The range of construction cost from the data sources was between \$2,000 and \$6,000 per parking space. The total cost varies widely based on the number of spaces and cost per space. Table 5 provides the cost estimates.

⁴ Sources include: International Bicycle Foundation; Boston Metropolitan Area Planning Council – Sustainable Transportation Toolkit: Parking; Colorado State University; and “Smarter Parking” by Nancy Schneider (January 2008) Appointee to the City of Delray Beach Parking Management Advisory Board and Green Advisory Taskforce, Florida.

Thinking about artificial turf & synthetic grass for your next residential or commercial project?

Special Report : Overview of Artificial Grass Systems

SR.05 - 2008

Keep these important points in mind:

6 Things to Look For in Your Artificial Grass System ...

1. Realistic color and look to the grass surfaces that will compliment natural lawns, in your area
2. A sound installation plan that helps improve form, function and drainage for the site, insures minimum waste while delivering an installation that looks natural and is stable and safe
3. Soil stabilizing fabrics, seaming, infill and other standard system components are used
4. Quality products backed by manufacturer's warranties; warranties on installation workmanship
5. Industry standard guidelines are met when designing, specifying and building your project
6. A complete set of documents are provided to you which would include a concept drawing and professional design estimate which includes exact costs for construction and job materials

6 Things You Should Do BEFORE You Get an Estimate

1. Go to ASGI and see how a professional installation might be done in your yard
2. Download the ASGI Design and Buyer's Guide to work with forms to help you build a budget
3. Contact local installers to set up appointments; we recommend getting 3 bids
4. Get to know the designer/estimator over the phone, ask about their products and services
5. Discuss the company's experience, business practices; ask for referrals, affiliations
6. Review any property association or local building codes and/or restrictions and review rebate programs that might be available from your city, county, water district or other utility

6 Things You Should Expect From Your Professional Installer ...

1. They provide proof of required licenses, insurance and bonds
2. They have experience with your type of project and site conditions
3. Whether they perform the work themselves, or hire sub-contractors, they are on the jobsite before, during and upon completion of the job; unexpected changes or modifications are handled promptly
4. They provide you a complete and easy to understand set of documents; change orders and any other paperwork, such as invoices, are always provided to you, in print, in a timely manner
5. Seasoned professionals know their products and their systems and build proven solutions using best-business-practices; they should provide you with several satisfied customer referrals
6. Courtesy, communication and a finished project that meets or exceeds your expectations

6 Things You Should Do BEFORE You Sign a Contract:

1. Check on the contractors' referrals, see several jobs in person; contact your local Better Business Bureau, builder's exchange or trade association to verify credentials and company reputation
2. Ask all the questions you may have about the company, their policies, products and expectations
3. Read over the product and installation warranty. Ask how customer service issues are handled
4. Know when materials will arrive and where they will be stored; before and during construction
5. Review the job plan, description of materials, drawings and construction schedules
6. Review all pages of the construction contract, payment terms and conditions, along with all required documentation; waivers, releases and addendums required by your local building authorities.



ASGi Special Report - Overview of Artificial Grass Systems

Lawns & Landscape Uses



Putting Greens & Bocce Courts



General Properties of Artificial Grass Materials:

- **Common Yarn Fibers**
 - Polyethylene (PE)
 - Polypropylene (PP)
 - Nylon (PA)
- **Surface Specifications (Ranges)**
 - Face Weight:: 24 to 90 (+) ounces
 - Denier: 4600 to 11,000
 - Stitch Gauge: 3/8 to 1/2 inch
- **Common Yarn Styles**
 - Slit Film - Fibrillated Tape
 - Monofilament
 - Mono-Tape
 - Texturized
 - Knit de Knit
- **Common Fiber Uses**
 - PE - Lawns, Chipping, TEE
 - PP - Greens, Bocce, Cart Path
 - PA - Greens, Bocce, Cart Path

Polyethylene (PE), is a synthetic yarn fiber made from olefins and was developed to be used for artificial grass surfaces.

Soft and resilient, PE fibers are commonly used for lawn, landscape, chipping and tee line projects. Most materials are tufted into porous backings.

They dry very fast, are resistant to stains, mold, mildew, UV and high traffic, when properly installed, groomed and maintained.

Many PE landscape, chipping and tee grass materials are now available in either slit film or monofilament fibers; from 1 to over 2 inches in height.

Slit film styles (made popular in sports field installations) tend to be a wider blade, resembling some natural fescue grasses or a Bermuda grass while monofilament fibers are more like a natural lawn of rye or blue-grass.



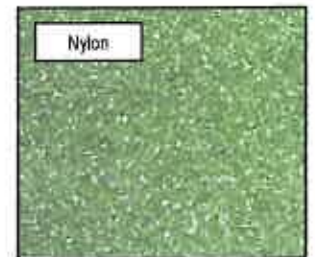
Fibrillated Slit Film



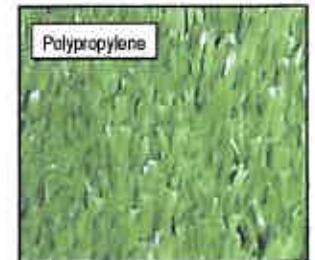
Monofilament

Nylon (PA), the first olefin fiber to be developed in the 1930s, and is most often used for putting green, chipping or field hockey surfaces. Nylon fibers are typically texturized and densely woven into non-permeable backing materials. Emerging styles include blades from 3/8 inch to over 2.5 inches and colors range from lite green to a richer, field green.

Polypropylene (PP) fibers were the first developed and used to simulate the performance of a bent-blade putting green surface. Many of the PP surface styles will be from 5/8 to 1.25 inches in blade height and once infilled* and rolled will stay bent and hold speed.



Texturized, & Fibrillated Slit Film



Classic Slit-Film

Available in several styles of fiber, color and texture, artificial grass surface materials can be created to resemble fescue, rye and other common natural grass blades. Colors can range from dusty greens or multi-colored tones to new spring green or the rich, deep green of blue-grass sod.

****All artificial grass surfaces benefit from the use of INFILL.***



Classic Slit-Film Infilled with Semi-Round Sand
Infill helps protect blades from UV damage, adds weight to hold the grass in place and provides a natural feel to the surfaces. Infill can help blades and surfaces last longer.

Design and Engineering Considerations

When you approach a synthetic grass project, it has to be with a mindset of longevity. How the job is engineered and built has a direct effect on your ability to achieve design objectives and deliver a solid, stable installation.

Four basic installation techniques are shown, to your right.

The ASGi Standard Installation Guideline for Landscape and Lawns shows you how to achieve natural looking lawn installations. The tips and techniques learned here can be incorporated into any plan.

One of the first considerations is what type and amount of site preparation is required. It can be to your advantage to excavate out problem concrete, asphalt, soils or other existing materials and import appropriate base materials into the site to insure a stable outcome.

As a basic rule of thumb, the final grade of the project, use and accessibility requirements will have to be taken into consideration during design and specification; prior to preparing an estimate and bid for your job.

If concrete or asphalt areas drain properly (no standing water on surfaces, long after a rain), synthetic grass and artificial turf can be placed on top. If there are cracks or other crevices in the surfaces, they may need to have some minor repairs to insure there will not be any dips or bumps to the final surfaces.

When installing over native soil conditions, fabrics are very important for the long-term stability of your projects, as well. ALWAYS start with a durable and porous synthetic fabric (woven or non-woven) and install it over native soils and then add your imported base layers, as required by your design.

A minimum of 2 to 3 inches of compacted aggregate materials UNDER the synthetic grass surfaces are installed over soil stabilizing fabrics, on top of native soil conditions (sub-base materials). See Figure 1.

If your final grade needs to be LEVEL with existing hardscape elements such as walkways, patios or driveways, allow for adequate excavation and estimate base materials to raise the base, after compaction, to a level of grade approximately 1 inch below the grade of the hardscape element.

To achieve a CROWNED look against hardscape, import additional materials and shape the base, during compaction, appropriately. Your grade should be set, after compaction, at approximately 1 inch below the level of the hardscape. To provide for additional watershed, install a small channel of drain rock, prior to adding base materials, as shown. (See Figure 2) Combined with the proper use of soil stabilizing fabrics, the drain rock channel (French drain) will allow run-off to fall below the surfaces and channel out, by gravity, without the risk of erosion.

When installing synthetic grasses against or in between large areas of concrete or asphalt that tends to shed water into the turf areas, allow for additional excavation, several layers of mixed base materials and the possibility of additional drain pipes, catch basins, connectors and drain rock as shown to the right. See Figures 3 & 4.

Synthetic grass areas can accommodate any conditions as long as the site is engineered to perform, under the requirements of local weather, weight load, traffic and use. Installations in public areas, even privately owned, may have further requirements to meet safety, accessibility or other standards of construction.

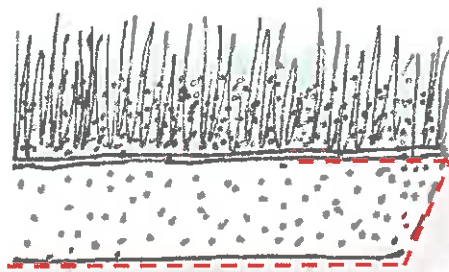


Figure 1

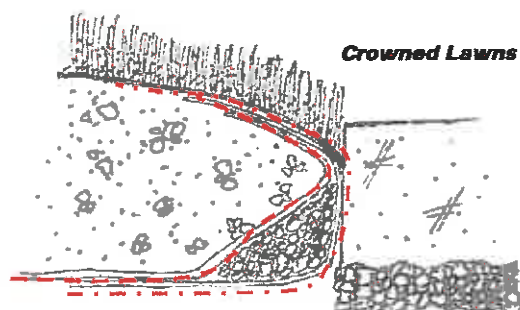


Figure 2

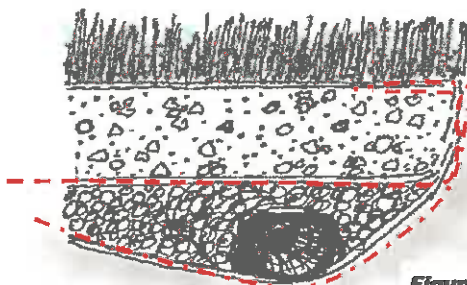


Figure 3

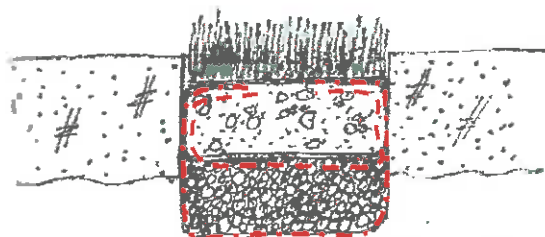


Figure 4

**In-between
Flagstone &
Concrete
Slabs**

MINIMUM JOB SPECIFICATIONS

Special Report : Overview of Artificial Grass Systems

SR 05 - 2008

Basic Lawn or Side Yard Installation

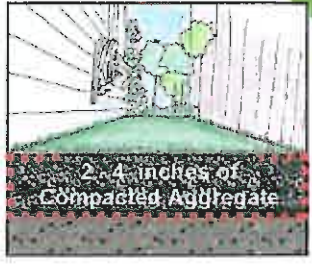


Illustration of a side view of the (above) construction at right.

ASGi has developed a minimum job specification and industry standard installation guideline based upon best-business-practices, sound construction techniques and the peer review of seasoned installers located throughout North America and abroad.

The minimum recommended job materials for a permanent, professional installation for lawn or landscape would include:

- Porous, Soil Stabilizing Fabrics
- 2-4 inches of Various Compactable Aggregate Base Materials
- Permeable Artificial Grass Surfaces
- Seaming Materials & Supplies
- Infill Materials



Over Well-Draining, Native Soil

Installation Guides at www.asgi.us

MINIMUM INSTALLER CREDITIALS

To contract for the sale and installation of artificial grass materials, operators, in many areas, are required to hold a valid license from the local contractor or builder exchange that govern your state, province or regional authority.

An experienced builder/installation professional should have 4 (four) years of experience to obtain most licenses, so they should also be able to provide you with several job referrals; do more than just look at photos, request contact information and call their references. US Builder Exchange and Contractor Licensing Office Lists - online at ASGi.

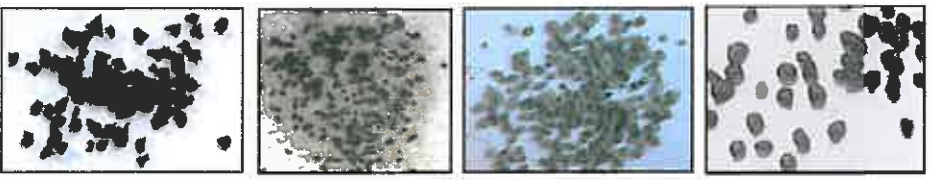
In the US, the Better Business Bureau can help you check the references of a business by searching on their website at www.BBB.org or check your local builder's exchange

Your contractor should be able to provide proof of required bonds, WC & general liability insurance.

If your contractor (or a sub-contractor) does not carry a valid workman's comp insurance policy - you may be liable for injuries that occur to laborers on your property during the construction of your project.

All artificial grass surfaces benefit from the use of INFILL.
Infill materials are used on top of the artificial grass surfaces, after they have been laid in place, seamed and edges trimmed. Infill materials are selected for their grade, size, shape and ability to fill up the voids between rows of yarn stitches of most turf styles and like any ballast materials, help to distribute weight across the installed surfaces, holding them in place; eliminating the surfaces from creeping, buckling or separating at the seams. All infill will contribute to the infiltration rate of the surfaces and be a determining factor in the surface fibers resiliency, wear and fall zone safety rating. The amount and type of infill used is determined, primarily, by the safety and effectiveness of the selected material which is based upon specifications and best-business-practices for the intended use, traffic, local weather and project expectations.

Commonly used infill material selections:



- SBR (recycled)
Or EPDM (not shown)
Rubber Crumb
- SBR (Ambient)
Rubber Crumb &
Natural Semi-Round Sand
- Elastomer-Coated
Semi-Round Quartz
Granules
(silica sand)
- Acrylic - Coated
Semi-Round Quartz
Granules
(silica sand)



Classic Silt-Film Infilled with Semi-Round Sand
 Infill helps protect blades from UV damage, adds weight to hold the grass in place and provides a natural feel to the surfaces. Infill can help blades and surfaces last longer.



Infill Close Up



Infill Applied to Surfaces

Additional Studies, Links, Glossary of Terms & Guidelines at www.asgi.us



How much does a natural lawn really cost?

The best lawns always start out as the most well constructed projects. Yet, regardless of how much care and attention you throw at a lawn, if it's not built to tolerate and blossom under local conditions—it won't make it and that's guaranteed.

Costs for a properly installed lawn will include site preparation, soil cultivation and amendments, trenching for irrigation, an irrigation system and drainage (pipes, fittings, controllers, valves, electric, etc.), the sod or seed, the labor to prepare the site and install the new lawn materials.

Of course renovation will include ...

[Continued—Page 2](#)



'It was worth every penny just to see my wife smile when she saw her new lawn. You'd think I'd bought her a mink coat or a string of pearls.'

Commercial Properties—Special Considerations

Need to prepare a ROI for a large project? Here are key points to consider while doing your "needs analysis" to gather input for your proposal.

Long term benefits are weighed against short and long term expenses for most commercial projects. Whether the installation will be used for profit (outdoor restaurant) or it's just an amenity (private park area), there are basic costs to account for in each

[Continued—Page 3](#)

TechNote High Lights

This Report:

Cost Analysis—ROI

Residential Lawn

Commercial Uses

Additional Considerations

[Value Proposition](#)

[CC&Rs & HOAs](#)

Compare Apples to Apples

All common costs should be considered when comparing bid amounts for installing a natural lawn to installing synthetic grasses. If you are comparing, insist on balance ... include professional services versus owner built efforts; time and effort are worth something! Value it!

- Excavation and site prep (dump/haul fees)
- Access to the area (time wasters like stairs)
- Compare natural lawn's need for soil amendments, preparation and additional materials to a synthetic lawn's base work.
- Check out specs for your areas.
- Natural lawns require additional trenching, pipes/fittings, electric, plumbing and timer costs. Of course, this would be optional for synthetic lawns.
- Compare warranties
What natural grass can last as long as the shortest of warranties on synthetic turf?
- Long-term maintenance, repair & replacement.

Water Wise WEB Site Links and Online Resources ..

www.bewaterwise.com
www.waterwisetexas.org
www.waterwise.ca
www.coloradowaterwise.org

Suggestions for Search Engine Keywords:

water, conservation, water wise

The emissions from one hour's use of a typical lawn mower engine is the same amount as driving a car 100 miles.

How much does a lawn really cost? (con't from pg1)

... the removal of older systems, sod, roots, etc and the hauling and dumping fees to get rid of all the old materials. If you are going to do a complete cost analysis — include all the above for the "natural lawn" area.

Other "natural lawn" long term costs include:

- Equipment for maintenance
- Fertilizers, seed and other treatments
- Water and electricity to run systems
- Replacement and repairs

For busy residential and commercial property owners, using lawn care companies is quite popular. On the west coast, monthly service fees for 1000 square feet of lawn might run between \$50 to \$65 for mowing and cleanup. Other lawn care services; reseeding, aeration, fertilizing, etc., are charged separately.

What about those unknown costs? How many times will the area have to be re-sod? How often will weeds and other pests need to be treated? How will activities, traffic and animals affect the lawn and create other maintenance issues or costs? Are there local ordinances restricting use of water, chemicals or surcharges for sewer treatment? What about the totally subjective issue of "drive-by appeal"?

Water costs for maintaining a lawn in somewhat arid areas (Northern California) can range from a low of \$18 per month to over \$300 per month. The difference is based upon the communities' water costs and delivery systems.

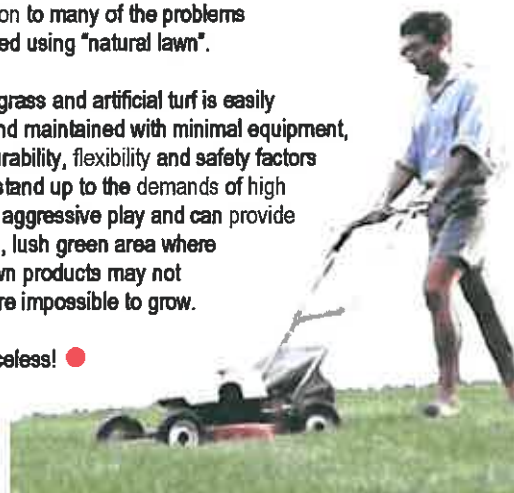
You can find out your water costs by calling your local water company offices (refer to links on asgi.us) They may also have studies you can use to determine local use and lawn watering recommendations. Of course, any Master Gardener group can provide you information about local recommendations on lawn care, including minimums on the installation requirements for a healthy lawn.

Water studies, based upon a typical 4 person household, show that a home with 1000 SF of irrigated lawn area will use 60% of a typical summer water bill on the cost of watering the lawn. That is why, during drought, most communities will ask owners to stop watering lawns first!

Other than the intangible values of the smell of a newly mowed lawn or the thrill some do-it-yourselfers get from the hum of their electric edge-trimmers — synthetic grasses and artificial turf solve a whole bunch of issues that not only show well in a properly prepared cost analysis, they are the only solution to many of the problems encountered using "natural lawn".

Synthetic grass and artificial turf is easily cleaned and maintained with minimal equipment, has the durability, flexibility and safety factors built in to stand up to the demands of high traffic and aggressive play and can provide a beautiful, lush green area where natural lawn products may not thrive or are impossible to grow.

That's Priceless! ●



Cost Comparison

Based Upon Costs (2003) Northern Calif 1000 SF

Installed By & Type	10 yr Cost Per SF	Installation	Watering*	Replacement**	Lawn Care***
Professional SOD Lawn	\$14.90	\$4.50 SF	\$2400	\$2000	\$6000
Owner Installed SOD Lawn	\$11.35	\$1.95 SF	\$2400	\$1000	\$6000
Professional Synthetic Lawn	\$10.00	\$10 SF	n/a	n/a	n/a
			* metered water, \$20 per month Roseville, CA (2003)	** Re-Sod Twice \$1 per SF Prof Replaced	*** Service Co. \$50 monthly fee

Commercial Use—Special Considerations (con't from pg1)

**Special Report :
Cost Analysis—Landscape Uses**



SR.01

... type of installation project. Commercial prospects tend to consider both tangible and intangible factors; form and function along with public safety and replacement costs. Most importantly, **CC&Rs** that may limit or guide the type of landscape solutions that they can use are always critical factors in decision making.

When the Tahoe City Marina and Shopping Center, (Tahoe City, CA) needed to figure out how to handle a 3500 SF area where costs to re-sod included closing the area for use, they reviewed solutions by criteria ...

- Beauty and Function
- Durability & Replacement Factors
- Ease of Maintenance & Repair
- Meets stringent environmental CC&Rs

No one factor was truly more important than the next: any one of these elements that "cost" too much or didn't meet the project's criteria would affect their decision to move away from using sod again.

Deciding Factors

Local CC&Rs required that porous, non-polluting materials be used. The function of the area, an outdoor restaurant serving food and beverages, is governed by health codes and needed to be publicly accessible, safe and easy to clean. As a busy tourist destination, the final look and feel plays an important role as does the factor of not having to close the area for repairs and maintenance for days at a time.

Replacing the sod was the basic objective. Competing options included concrete, pavers, asphalt, compacted aggregate or dirt.

The synthetic grass installation proposal was 15% higher than pavers, 25% higher than decorative concrete, 50% higher than sod, 75% higher than plain asphalt, 95% higher than dirt or rock coverage.

Though the highest of all the initial "costs" of installation, the synthetic grass solution won due to several factors.

Synthetic Grass provided:

- Durable beauty, less dirt & dust
- Increased comfort and days of use
- Exceeded local CC&R criteria
- Lowered maintenance, easy to clean
- Eliminated need for regular repairs
- Potential for replacement—maybe 10 years?

The installation is now 5 years old and has met or exceeded all expectations. The hard numbers alone would not have closed the deal. The management of Tahoe City Marina bought on value and got more than they anticipated. A wise investment indeed. ●

Commercial Uses — Key elements

- Beauty and function—provides the look and feel of a well-kept lawn with no hassles
- Durability factors make synthetic grass projects long-term investments
- Ease of maintenance & repair reduce recurring expenses to a minimum
- Porous and environmentally safe, synthetic grass can improve drainage and eliminate pollutants and allergens
- Increase the ability and use of the area and eliminate loss of revenue due to closure for repairs, replacement, maintenance
- Commercial leasing available to private and public business, municipalities, and schools ●



Association of Synthetic Grass Installers

Special Report : Cost Analysis—Landscape Uses

SR.01

HENRY FORD WAS HEARD TO SAY THAT THE KEY TO SUCCESS WAS PLANNING

Job Cost Considerations Should Include:

Site location— Site location and preparation requirements to achieve the project's objectives need to be considered prior to budgeting.

Area preparation— Excavation, hauling and dump fees, new trenching, additions and changes to existing landscape, drainage, irrigation, lighting, electric, gas line needs. Hauling and dump fees can add to the bottom line—know your local costs and requirements; are permits required?

Site construction— how much and what types of materials need to be brought to the site; are these elements delivered for additional cost. How and where can materials be staged for use during construction; are there restrictions or hazards for using dump boxes or excavation equipment. How close can materials be stored to the final site to keep transport to the least amount of steps?

Weather— Any chance for delays or construction issues?

Sub-Contractors Schedules— Delays can begin before a job even starts; schedule construction team's appropriately.

Contingencies:
Always have a Plan B in mind.



Glossary (check online at asgi.us for a comprehensive industry glossary)

ROI or Return On Investment: How much might one realize in either savings or profits from the investment; generally stated in numbers of years, months, weeks or days; generally based upon measurable results, in dollars and cents.

Value Proposition: Though tangible costs and profits can be included, generally, the value of an investment is often thought of in more emotional ways; peace of mind, security, durability, safety and other elements of perceived value to the investor. Determining the investors value motivation is critical to closing.

CC&R—Covenants, Codes and Restrictions: These are rules and guidelines communities have formulated and agreed to use to set local or regional standards. Generally the CC& R is accompanied by a "Design Guideline" for the development and is signed by the property owner and is enforceable by a group or committee assigned to do so in the local community or home owners association.



Association of Synthetic Grass Installers

POB 189 664 A Freeman Lane
Grass Valley, CA 95949

www.asgi.us
available 24/7



1st Class
US
Postage
Needed

Please forward to:

Agenda Date: Feb 8, 2010

Agenda Item: 4(h)

Memo

To: Trails and Landscaping Committee
From: Mark Janney, Maintenance Supervisor
Meeting Date: February 8, 2010
Re: Proposed Street Tree List

Recommendation: After discussion making any additions or deletions make a recommendation to the City Council to accept the master list.

Background:

The City has been interested in creating a master street tree list to be able provide guidance for new developments as well as for maintenance staff reference in replanting of trees in the Landscape Maintenance District. After many years of experience the City's maintenance supervisors have reviewed the type of trees that exist in the city maintain street areas and their overall ability to do well in this area. In preparing the list consideration was also given to other maintenance issues and drought tolerance.

There is not a desire to create a street theme listing as the City of Clayton unique characteristics is that there are a variety of tree types throughout the streetscape. Bit to create an overall list of trees that have already been established in this area and are doing well. Having a variety of trees on the streetscape is also a good strategy so that if a particular tree type develops or a disease occurs it may be more prevalent in a particular tree type, thus if plants do get a disease impacts would be limited. Other trees can always be suggested and will be considered on its merits to the project/location maintenance issues etc.

The following is the list of trees that are recommended to be used on public properties and rights-of-way of the city. The attached pages include color pictures.

Lagerstroema Indica Crape Myrtle	Prunus Krauter Vesuvius Flowering Plum
Pistacia Chinensis Chinese Pistache	Liquidambar Styraciflua American Sweet Gum
Pyrus Calleryana 'Bradford' Ornamental Pear	Sequqia sempervirens 'Aptos Blue' Costal Redwood
Quercas Agrifolia California Live Oak	Cedrus 'Cedar' Deadar Cedar
Quercas Lobata California Valley Oak	Schinus 'Molle' California Pepper Tree
Quercas Douglasii Blue Oak	Ulmus Parvifolia 'Athena' Chinese Evergreen Elm
Platanns x acerifolia 'Columbia' London Plane Tree	Cereis Canadensis 'Alba' Eastern Redbud

CITY OF CLAYTON POPOSED TREE LIST FOR PUBLIC PROPERTIES AND RIGHTS-OF-WAY

Lagerstroemia Indica
Crape Myrtle



Pistacia Chinensis
Chinese Pistache



Pyrus Calleryana 'Bradford'
Ornamental Pear



Quercus Agrifolia
California Live Oak



Quercus Lobata
California Valley Oak



Quercus Douglasii
Blue Oak



Platanus x acerifolia 'Columbia'
London Plane Tree



Prunus Krauter Vesuvius
Flowering Plum



Liquidambar Styraciflua
American Sweet Gum



Sequoia sempervirens 'Aptos Blue'
Costal Redwood



Cedrus 'Cedar'
Deodar Cedar



Schinus 'Molle'
California Pepper Tree



Ulmus Parvifolia 'Athena'
Chinese Evergreen Elm



Cercis Canadensis 'Alba'
Eastern Redbud



Agenda Date: Feb. 8, 2010Agenda Item: 4 (i)

Memo

To: Trails and Landscape Committee**From:** Mark Janney, Maintenance Supervisor**Meeting Date:** February 8, 2010**Re:** Status of future of East Bay Regional Parks District Measure WW funds for use by the City

Measure WW was passed by the voters in Contra Costa and Alameda County in November 2008.

Twenty-five percent of the proceeds of the bond measure (\$125 million) will go to cities, special parks and recreation districts, and county service areas for their park and recreation services. These funds are to be used for the acquisition and development of neighborhood, community, regional parks and recreation lands and facilities. The City of Clayton's share of the \$125 million amount is \$492,883.

To receive Measure WW funds, the East Bay Regional Bay Regional Park District (EBRPD) requires local agencies to adopt a resolution approving a master contract for the grant funds, authorizing grant applications, and designating the authorized City representative who will execute all related actions and documents. The document does not require the City to specify a project at this point. At the January 5, 2010 City Council meeting, the City Council approved submittal of the documents. Executing the Master Contract allows any city eligible project processing expenses (e.g. engineering, design, land use entitlement, environmental review costs) to potentially be grant eligible for reimbursement. Once a specific project has been identified and approved by the City Council for pursuit, staff will commence processing the project.

At the City Council's January 25th meeting they established their annual goals and general direction for City staff for 2010. At this goal setting session the City Council determined that they wanted to pursue additional parking, and concession stand (which could also have an announcer booth along side) at the Community Park lower field area and use the Measure WW funds as there is no other funding sources available and parking issues are impacting the nearby neighborhood and use of the facility. These items had previously been included in a feasibility study the City Council requested last year along with artificial ball field turn and field lights. The use of the bond funds requires the asset to have a life of 20-25 years and the City to ensure the asset is properly well maintained during that period. The ultimate use of the funds would require the city to provide supporting documentation as to its ability to maintain the asset over the prescribed period.

The City Council was aware of the previous report by the TLC on the Trails and need for making future capital improvements to the trails. They indicated there may be other funds for such trail improvement projects through other sources such as Measure C/J/MTC transportation sources, state park bonds and grants. The city does not have identified sources of funds or new revenues in which to enhance trail maintenance on a regular basis thus would have problem in meeting the Measure WW requirement. The ongoing maintenance of a parking lot and announcer/concession stand would be minimal and as built structures would have a shelf life of 20-25 years with minimal maintenance.

Additionally the potential additional parking area would help reduce the landscape maintenance district costs as shrubs/trees and bare dirt along Marsh Creek Road between the current lower lot and the school parking lot would be eliminated or greatly reduced.

POTENTIAL ADDITIONAL PARKING AREA COMMUNITY PARK



POTENTIAL ADDITIONAL
PARKING AREA POSSIBILITY



POTENTIAL CONCESSION STAND
W/ ANNOUNCER BOOTH
LOWER FIELD POSSIBILITY @
COMMUNITY PARK

Agenda Date: Feb. 8, 2010

Agenda Item: 5(a)

Laura Hoffmeister

From: Robert Steiner [rws32@earthlink.net]

Sent: Tuesday, February 02, 2010 3:45 PM

To: cityclerk@ci.clayton.ca.us; DavidJohnson32@sbcglobal.net; jerrykosel@earthlink.net; jojocaspar@comcast.net; Kelly.Marshall@earthlink.net; mamabearsky@netscape.net; rrichmond509@comcast.net; victorgeisler@yahoo.com; 'Allen Lampo'; 'Arlene Kikkawa-Nielsen-Library'; 'Barbara Jacobs'; 'Beth Neudell'; 'Bill Vineyard'; 'Bill Walcutt'; 'Bob and Eldora Hoyer'; 'bob armstrong'; 'Bob Steiner'; 'Candace Bass'; 'Cecilia Rubino'; 'Christina Scarlott'; 'Dan Richardson'; 'Dave Shuey'; 'David Disend'; 'Gary Napper'; 'Gregg Manning'; 'Hank Stratford'; 'Harun Simbirdi'; kh5149@att.com; 'Howard Geller'; 'Jim Diaz'; 'Joe Medrano'; 'Keith Haydon'; 'Laura Hoffmeister'; 'Linda Pinder'; 'Marlyne Hadley'; 'Mary Spryer'; 'Mayor of CLAYCORD'; 'Virginia Siegel'

Subject: It's that time again.

All:

Clayton Cleans Up-2010 is scheduled for Saturday April 24th. Please mark your calendars. We are having an organizational meeting on February 24th at 7:00 pm in Hoyer Hall at the library.

We invite any and all who are interested in participating in this very important community activity to join us at the kickoff meeting on 2/24. We will review last year's successful campaign and line up the worker-bees for this year.

Hope to see you all there, Bob

PS You may be on several different email lists, if so you may well receive multiply announcements regarding this event. We are not trying to clog up your mail box; we just want to be sure that you are in the loop.

Steiner & Associates
Management Consultants
4701 Morgan Territory Road
Clayton, CA. 94517
925-672-5854

Website: www.rwsteinerconsulting.com

Confidentiality Notice: The information contained in this message is legally privileged and confidential in nature. It is intended for the sole use of the individual addressee. You are hereby notified that any release, dissemination, or copying of this communication without the expressed consent of the originator of this document is prohibited.

Clayton Cleans Up general overview

Coordination being provided by Clayton Pioneer

A community outreach event to provide public information and participation to the residents (a feel good stewardship activity), about the city watershed its creeks and trails, open space and parks, etc. Opportunity for public to clean up by undertaking simple trash/ litter pick up along city trails, creeks, openspace/parks and sidewalks. (*Note: No work in the city street medians or other areas that require lane closure or other safety measures*). Optional work opportunity to do trimming of shrubbery along sidewalks and/or trails if residents bring their own hand trimmers and sufficient committee volunteers to coordinate and direct this aspect. City does not provide any trimming equipment but will provide bags and disposable gloves. Residents are provided some segment maps where they might want to look for "stuff to pick up".

All materials can be left at street/trail-street intersections for pick up by volunteers with pick up truck. Materials collected by the committee volunteers pick up trucks and are off loaded at city corp. yard. Dumpsters.

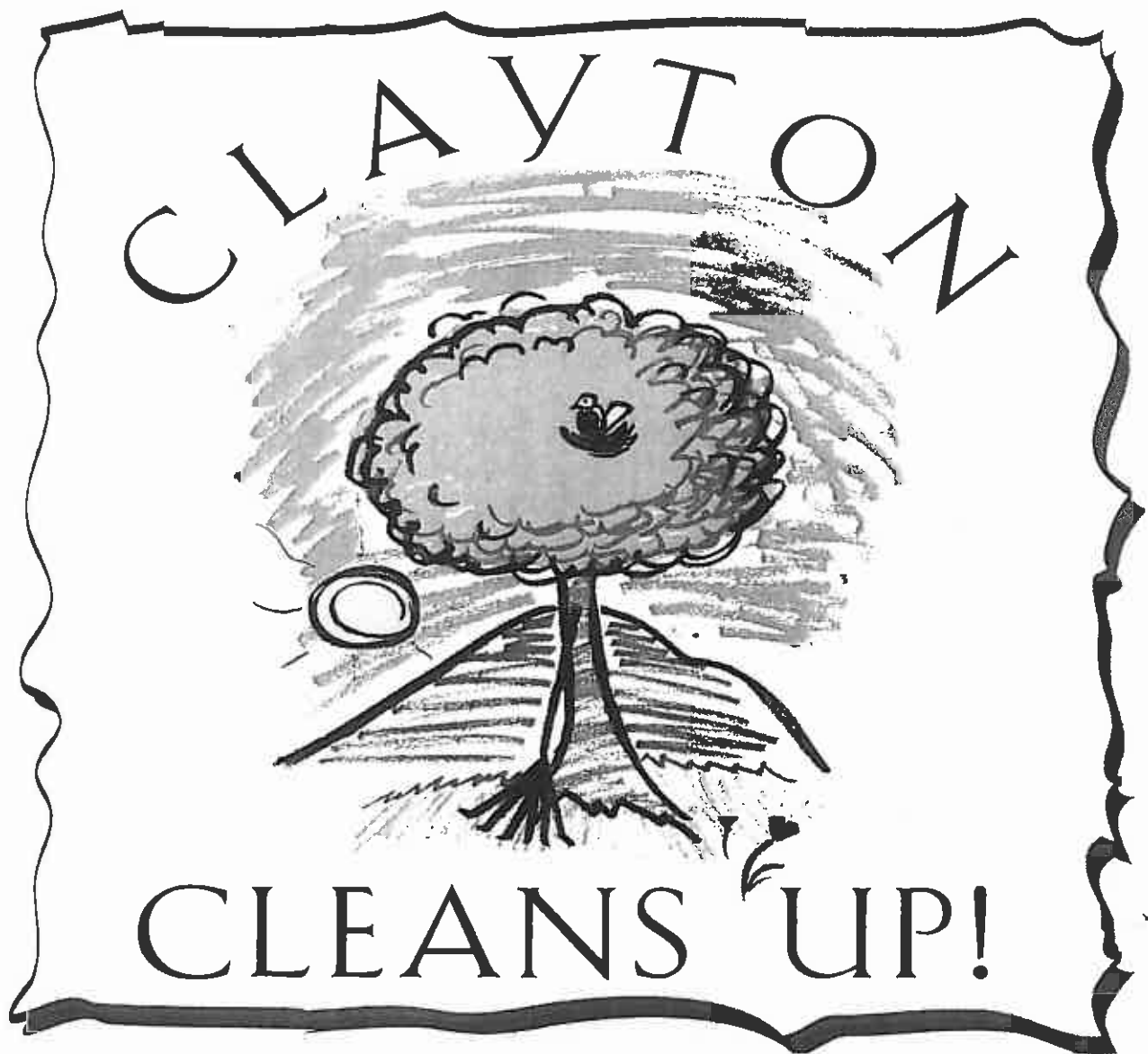
Allied Waste Services has typically donated 100 special screen event t-shirts that the clean up committee designs.

The event is staged at the city hall courtyard with that being the check in point where info tables and materials are provided. (restrooms are also located here)

A BBQ has been provided for all the public participants as a thank you. There may also be juice/coffee muffins/ bottle water provided at the check in at am for all participants.

Invite to other environmental type organizations community organizations to have info table (city will provide table) they provide their own materials and staff person to staff their table. Info tables are set up/taken down and staffed by the groups representatives and located in the city hall courtyard.

The public participation has been either 40 up to 140 – it is really weather and conflicting event dependent. The organizing committee will need to decided if it is a rain or shine event or rain cancels. In the past it has been rain or shine event.



**Help clean Clayton creeks and parks.
Individuals, homeowners associations,
neighborhood groups, service clubs . . .
anyone is welcome!**

**Saturday, April 24, 2010 from 9 a.m. - Noon
Meet at Clayton City Hall, 6000 Heritage Trail**

For more information call (925) 672-0500

**A NEW MISSION
Beginning 2007/2008**

YOUR new Trails and Landscaping Committee (TLC) consists of community volunteers: neighbors, friends, business partners, and residents of Clayton. The Committee began its new mission in August of 2007 to help the City implement the voter-approved plan to manage the current and future needs of the Landscape Maintenance District.

As the oversight committee, the TLC provides short-, mid-, and long-term implementation guidance to the City Staff and City Council regarding the spending of Measure 'B' funds within the Landscape Maintenance District.

In the coming months and years, you will begin to notice the prudent visual & aesthetic improvements that your tax dollars will make possible under Measure B.

However, in addition to what you will "see" in the District, there will also be functional, structural and process-oriented improvements which will

yield long-term cost-savings and equity within the District. The future will be an exciting time for the District and the City.

The TLC in Action!

The Trails and Landscaping Committee meets quarterly the 3rd Monday of the month at 7 p.m. at the library. Residents of Clayton are invited to attend these meetings to hear what is being proposed, to provide input and to get your questions answered.

Meeting agendas are posted at: City web site at www.ci.clayton.ca.us; City Hall, 6000 Heritage Trail; Clayton Library, 6125 Clayton Road; Ohm's Bulletin Board, 1028 Diablo Street.
Please direct any questions or concerns to the City via its website or address above.

**Your Trails and
Landscaping Oversight
Committee Members**

Candace Bass, JoAnn Caspar,
David Disend, Victor Geisler,
David Johnson, Jerry Kosel,
Kelly Marshall, Virginia
Siegel, Bill Vineyard

**AFTER
MEASURE 'B'**



**NOW THAT MEASURE
'B' PASSED, WHAT CAN
YOU EXPECT?**

Thanks to overwhelming support of Clayton voters, funds are now approved to keep your landscaping and trails maintained. With your passage of Measure 'B' there is an initial annual assessment of \$197, a much needed increase. The City Maintenance Department will receive new funds by December 2007, once property tax bills are paid.

Agenda Item: 5(b)

Agenda Date: Feb 8, 2010



WHAT ARE THE STANDARDS & PRIORITIES?

CRITICAL STANDARDS

1. FIREBREAKS ARE MANDATORY.
2. WEEDS ARE NOW CUT ALONG MAJOR TRAILS AND CREEKS TWICE, YEARLY.
3. TREES ARE TRIMMED FOR SAFETY, FIRST.
4. IRRIGATION BREAKS ARE REPAIRED, AS NEEDED.
5. PUBLIC LANDSCAPE IS TRIMMED TWICE, YEARLY.
6. TRAIL REPAIR AND INSPECTION OCCURS YEARLY.
7. LANDSCAPED AREAS ARE NOW FERTILIZED YEARLY.
8. THE COMMITTEE NOW HAS \$20,000 EACH YEAR TO TARGET DISTRICT IMPROVEMENTS.

TLC'S NEW STRATEGIC FOCUS

- A. TAKE CARE OF *WHAT WE HAVE BEFORE WE PLANT SOMETHING NEW!*
- B. REMOVE UNWANTED EXPENDITURES AND CONTROL COSTS WITH STRICT OVERSIGHT.
- C. CREATE EQUITY IN THE DISTRICT.
- D. IMPLEMENT COST-EFFECTIVE MEASURES TO IMPROVE IRRIGATION INFRASTRUCTURE AND FUNCTIONS.
- E. INVEST IN IMPROVED EQUIPMENT AS A MEANS TO INCREASE MAINTENANCE EFFICIENCY AND EFFECTIVENESS.
- F. IMPLEMENT SEASONAL AND SITUATIONAL-BASED LABOR MANAGEMENT INITIATIVES.



Photos courtesy of Steve and Julie Pierce

HOW CAN YOU HELP YOUR LANDSCAPE DISTRICT?

- *Report* any District issues to the City Maintenance or to one of your TLC representatives-- especially when safety is involved!
- *Stay informed.* Attend a TLC Meetings, held at 7 p.m., the second Monday of each month in the Library Meeting Room.
- *Be responsible* for your own litter and for your pet's waste when using the trails.
- *Become an active Partner* - adopt one of Clayton's trails. Let us tell you how!
- *Enjoy the scenery* while you take a walk, go for a stroll, or ride your bike. This is your community and your District. These assets are what make Clayton so unique.

* * * * *

The Trails and Landscape Committee is receptive to joint ventures with other civic and community organizations in its continuing effort to improve the appearance of your Landscape District.

Agenda Date: Feb 8, 2010

Agenda Item: 6(a)

Laura Hoffmeister

From: postmaster@ci.clayton.ca.us
Sent: Thursday, February 04, 2010 11:42 AM
To: cityinfo@ci.clayton.ca.us
Subject: city feedback form

Below is the result of your feedback form. It was submitted by
(postmaster@ci.clayton.ca.us) on Thursday, February 4, 2010 at 14:41:50

First Name: Kelly

Last Name: Balog

Street Address: 13 Nottingham Circle

zipcode: 94517

city: Clayton

Contacts email: ckbalog@sbcglobal.net

Subject: I just wanted to thank your landscaping staff for the wonderful job they did yesterday cleaning Atchinson Stage between Clayton Rd. and Pine Hollow. I walk my dog every day and it looks great. I know how little money there is in the budget and I just wanted you to know how appreciative we are it was spent on our streets. Thank you again.

Submit: [Send Comments](#)

Laura Hoffmeister

Agenda Date: Feb. 8, 2010

From: Laura Hoffmeister [lhoffmeister@ci.clayton.ca.us]
Sent: Friday, February 05, 2010 6:27 PM
To: 'quiganator@yahoo.com'
Cc: 'Hank Stratford'; 'Virginia Siegel'
Subject: FW: Clayton Resident Wish proposed response

Agenda Item: 6(b)

From: Laura Hoffmeister [mailto:lhoffmeister@ci.clayton.ca.us]
Sent: Friday, February 05, 2010 6:24 PM
To: 'quiganator@yahoo.com'
Cc: 'Hank Stratford'; 'Virginia Siegel'
Subject: FW: Clayton Resident Wish proposed response

Dear Cheryl:
 First off, welcome to Clayton.

Your email was forwarded to me by the Mayor for a response. I am the staff coordinator for the City's Trails and Landscape Committee (TLC). The TLC is a group of seven residents that advises staff and the City Council on matters relating to the City's trail and open space areas (we do not do the active park areas). Since your email mentions your concerns and ideas for the Trails it was appropriate that the Mayor ask me to respond.

In your email you suggest that we should we should have more trash cans /doggie disposal containers along our trails. This item has been looked at many times in the past by various citizen groups and City Council, most recently this last year with the TLC. In general the City Council determined not to place doggie mitt stations along the trails due to a variety of factors. Those factors included more litter and maintenance issues with kids taking the plastic out of the holder and them blowing in the wind and them getting into the creeks and causing additional litter; newer state regulations imposed on the city for reducing and eliminating sources of trash, especially plastic bags in creeks; potential state regulations that would require cities to eliminate the use of plastic bags in its purchasing and that in grocery stores. However the City Council did include them in the donor recognition program for the following locations: Lydia Lane Park (it already has trash can); Westwood park (which also has trash can); El Molino/old Marsh Creek Road and the Community Park. The donor could purchase the container for about \$500. It cost the City about \$120 a roll to supply it with mitts.

As to the trash container idea there were some locations identified that the public or organizations could fund through purchase of a can in our recognition purchase program as well. In the program there is a specific type of container and specific locations as to placement of containers. The placement locations were based upon a variety of factors most notably was ability of maintenance staff to service them; visibility to other areas so that vandalism is minimized; and not close to the creek corridor so as to comply with state water quality requirements. Also of concern is we are in a wildlife interface area and our trash cans are visited by a variety of nocturnal and daytime animals and they often remove items from the containers and make mess -- so the type of container, and how it is anchored to the ground were also specified. We have trash cans along the Main Cardinet Trail which runs from Safeway to Downtown, at Westwood Park, Lydia Lane Park, Library, knoll at top of trail off black Diamond Plaza (between old Marsh Creek Rd and Center/Easley Dr) Black Diamond Plaza, and Downtown, going past downtown there are ones at the Dog Park and Community Park. We found in our past outreach efforts and communication with the Dog Park support group that most responsible pet owners know of these locations as well. El Molino/old Marsh Creek Rd. is an approved location for which no one has funded the can installation. It costs \$1740 for the trash can. Overall there is a trash can every half mile or closer along the main trail route- Cardinet Trail.

We have periodically provided news information in the local Clayton Pioneer in the Mayors column, Police Chiefs column and the Trails and Landscape Committee column to remind our citizens to not discard items along the trails and to be responsible pet owners and pick up after their pets. Most of our

2/5/2010

community members are responsible citizens, however there are a small amount that no matter what is provided or done or said will not make the effort or comply with the law (speeding, not making full stops as stop signs, etc as well). The City Council determined not to pursue signage as the ones not abiding by the rules would likely not obey the signage either. As to feces along the trails we have also found that it is not all from pet waste. Our creek corridors are used by a variety of wildlife and they also leave their mark, this includes the many foxes, coyotes, etc that are larger animals that are typically out only in the evening so are not seen by the public.

We thank you for sharing your concerns and ideas. I have attached some information about the Adopt a Trail program and recognition purchase in case you or someone you know or an organization you may know might be interested in participating. The local Clayton Pioneer also accepts letters to the editor, possibly an article written by a resident such as yourself reminding your neighbors to be responsible pet owners etc might help in reinforcing the message as well.

Again thanks for your comments.

Sincerely
 Laura Hoffmeister
 Assistant to the City Manager

(925) 673-7308
 LHoffmeister@ci.clayton.ca.us

----- Forwarded Message -----

From: CY Owens <quiganator@yahoo.com>
To: hank_stratford@yahoo.com
Sent: Sat, January 23, 2010 10:41:43 AM
Subject: Clayton Resident Wish

Hi I am a new Clayton resident and saw your article in the Clayton Pioneer about wishes for services, facilities, etc.

I want to start out by saying my partner and I moved to Clayton because of the small community atmosphere. We also love all the walking trails. Herein lies my wish. We have a pretty good sized dog that we walk every day (on Oakhurst). I will have to say I am quite disappointed by the fact there is dog feces all over the place. Not sure why people don't feel a sense of responsibility about picking up behind their dog. I know it is not my favorite thing to do but I know I don't want to see dog feces every where and I have to do my part to eliminate it as a problem. Also one of the weird things I noticed is that some people will take the time to pick their dog's feces in a doggy bag but then leave the bag. Do they think someone else is going to pick up behind them?

So when I read your article I thought of this wish. Maybe people would pick up behind their dogs. I thought the city could support this by putting garbage cans (or at least some doggie disposal containers) at major intersections. Maybe if people didn't have to walk very far with the dog feces they would throw in in a disposal container. I am sure the City of Clayton workers that maintain the beautiful streets would appreciate it as well. I can just guess that every time they trim bushes or trees they step in dog feces!!

Paris, France used to have this same problem but with a strong marketing campaign and support to the residents (putting out disposal containers) they were able to eliminate this problem.

I know it seems like a minor wish but I bet if the dog "poop" was cleaned up it would lead to an even more beautiful city.

Thanks for "listening".

Cheryl

2/5/2010

Agenda Date: Feb. 8, 2010

Laura Hoffmeister

Agenda Item: 6(c)

From: Laura Hoffmeister [lhoffmeister@ci.clayton.ca.us]
Sent: Monday, November 30, 2009 2:17 PM
To: 'Kevin.Creedy@gmail.com'
Subject: FW: Report a Problem

Thanks for contacting us with your information I have advised the Maintenance staff of this and they will follow up We typically do remove such things as they are found -- we remove and the kids put back and so it goes. We have in the past done information articles in the newsletter and newspaper that these types of items cause damage and erosion issues and are safety issues but have found that it did not yield any change in conditions/behaviors.

Again thanks for letting us know so that we can follow up

Laura Hoffmeister
Asst. to the City Manager - City of Clayton

LHoffmeister@ci.clayton.ca.us

City of Clayton
6000 Heritage Trail
Clayton CA 94517

925-673-7308 (ph/vm)
925-672-4917 (fax)

-----Original Message-----

From: Kevin.Creedy@gmail.com [mailto:Kevin.Creedy@gmail.com]
Sent: Wednesday, November 11, 2009 5:02 PM
To: cityinfo@ci.clayton.ca.us
Subject: Report a Problem

Below is the result of your feedback form. It was submitted by
(Kevin.Creedy@gmail.com) on Wednesday, November 11, 2009 at 20:02:08

date: 11/11/2009

persons_name: Kevin Creedy

issue: Parks and Recreation Issues

comments: On the trail between Lydia Ln Park and the Library kids are digging up the trail to build bike ramps which is a hazard. They block up the trail with there bikes and do not move out of the way of walkers, runners or other bike riders. There is also a chance that one of these kids will hurt themselves on Clayton property using these dirt ramps. They also left big holes in the ground and when the grass gets taller this winter people will trip in the holes and the tractor that the city uses to mow the grass will get stuck or flip over.

submit: Send Form to City

Laura Hoffmeister

Agenda Item: 6(d)

From: Laura Hoffmeister [lhoffmeister@ci.clayton.ca.us]
Sent: Monday, November 30, 2009 11:56 AM
To: 'JERRYDZ1@comcast.net'
Cc: 'mjanney@ci.clayton.ca.us'; 'jjohnston@ci.clayton.ca.us'
Subject: FW: city feedback form

Jerry

Sorry in the long delay in responding to your comment, however the TLC only meets quarterly and at their November meeting the maintenance staff did propose a draft phased approach re-planting plan that the TLC is considering that the staff could follow at such time the drought is over.

As part of that plan the shrubs that you list below would be removed and replaced, and likely the narrow nosed of the medians would be hardscaped. The TLC packet from the November 16th meeting is posted on line and you can review the proposed draft phased re-planting plan. The TLC will continue its review of this draft at their next meeting likely to be in mid January.

I think you will find the concept approach along the lines that you have suggested.

At this point the maintenance staff is not going to remove any plants except those that have died as time permits. We did reduce all water in the LMD including that to the shrubs. The City Council approved a landscape district water reduction management plan this past May in response to the water district cut of 40% of the water use in the LMD. We were able to install a well in downtown and reallocate that water to other areas. The plan called for no water on lawns in the LMD and reduced water to shrubs and trees. We focused on the trees as the highest priority as they are the most expense to replant. Many shrubs have stressed with the reduced water schedule; and others have not made it. As time allowed the maintenance staff has done some removal of the dead shrubs, and will continue to do so again as time and priorities allow.

Once the drought and water restrictions are lifted then the maintenance staff will be able to consider replacement plantings in accordance with a phase plan that the TLC accepts. Part of the replacement planting plan also proposes reducing or eliminating lawn areas in the LMD.

Thanks again for your comments. Your past involvement as a Blue Ribbon/TLC member and your background in landscape is appreciated.

Laura Hoffmeister
Asst. to the City Manager - City of Clayton

LHoffmeister@ci.clayton.ca.us

City of Clayton
6000 Heritage Trail
Clayton CA 94517

925-673-7308 (ph/vm)
925-672-4917 (fax)

-----Original Message-----

From: postmaster@ci.clayton.ca.us [mailto:postmaster@ci.clayton.ca.us]
Sent: Wednesday, August 05, 2009 8:24 AM
To: cityinfo@ci.clayton.ca.us
Subject: city feedback form

Below is the result of your feedback form. It was submitted by
(postmaster@ci.clayton.ca.us) on Wednesday, August 5, 2009 at 11:23:41

First Name: jerry

Last Name: zimmerman

Street Address: 353 chardonnay circle

city: Clayton

Contacts email: JERRYDZ1@comcast.net

Phone: 925-672-2243

Subject: I understand that we have financial constraints and drought management creates more work for our staff. Suggest that we remove large shrubs that are on the way out. Ceanothus Easley and Center, shrubs library of Clayton Rd. at intersection. thanks

Submit: Send Comments
